

LAND CORNER RECORDATION CERTIFICATE
Filing Requirement of Act 74, Mich. P.A. 1970

For corners in

Table with columns: Oakland (county), Located In, Corner Code #. Rows include Public Land Survey, Property Controlling in Section, and Miscellaneous Property in Sec.

\$ 7.00 MISCELLANEOUS RECORDING
\$ 2.00 REMONUMENTATION
19 DEC 96 11:04 A.M. RECEIPT# 17B
PAID RECORDED - OAKLAND COUNTY
LYNN D. ALLEN, CLERK/REGISTER OF DEEDS

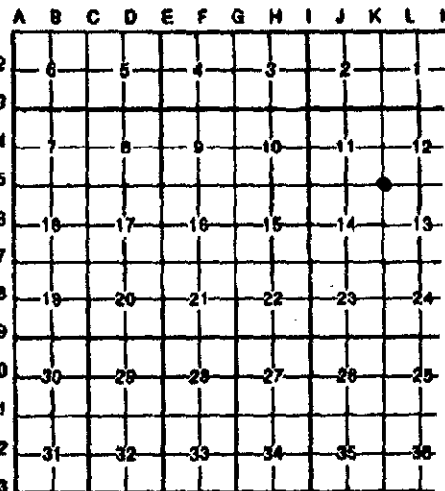
Compliance with
ACT 345, P.A. 1990

APPROVED ON: 11-6-96
OAKLAND COUNTY REMONUMENTATION
TEER GROUP COMMITTEE
Register of Deeds Stamp & File Number

4. Lot No. , Recorded Plat

5. Private Claims

I, Joseph C. Kapelczak, in a field survey on 29 January, 1996, do hereby certify that under requirements of P.A. 74, Michigan P.A. of 1970, the corner points mentioned in lines 1 and 2 above were in conformance with regulations and rules therefore as required in the current manual of survey instructions of the United States Department of the Interior, Bureau of Land Management or by a decree of a Court of Law and/or that the corner points mentioned in lines 3, 4 and 5 above were in conformance with the rules of the Michigan Board of Land Surveyors or by a Decree of a Court of Law; established, re-established, monumented, re-monumented, recovered, found as expressed below:



NOTE: Not more than 4 corners, all in the same town and range, may be recorded on this certificate.

A. Description of original monument and accessories and/or subsequent restoration:

- Post set in 1816 G.L.O. Survey. N 79-1/2" E 7 lks 9" Maple, S 09 W 10 lks 7" Beech
L.C.R.C. Roon 1989 L.11057 P.815
Fd. 1/2" iron in monument box
N 48 E 64.06' nail in telephone pole
S 50 E 72.32' nail in power pole and telephone pole
S 53 W 68.13' nail in traffic pole
N 21 W 77.75 face of steel fence post
L.C.R.C. Kapelczak 1994 L.15423 P.130
1/2" rerod in monument box
S 31 E 104.60' PK nail w/tag 24598 northeast side power pole
N 88 E 43.51' chisled "+" west side light pole base
N 42 E 131.57' PK nail w/tag #24598 N.W. side power pole
S 47 W 136.66' PK nail w/tag #24598 S.E. side power pole

B. Description of corner evidence found and/or method applied in restoring or reestablishing corner:

Recovered 1/2" rerod in monument box 1.0' west of centerline Meadowbrook Road concrete.

Recovered witnesses

- S 31 E 104.60' PK nail w/tag #24598 northeast side power pole
N 88 E 43.51' chisled "+" on west side power pole
N 42 E 131.57' PK nail w/tag #24598 northwest side power pole
S 88 W 41.18' chisled "+" on east side light pole base
S 47 W 136.66' PK nail w/tag #24598 southeast side power pole
S 10 W 375.29' 1/2" rerod #24598 northwest corner Parcel #22-14-200-007

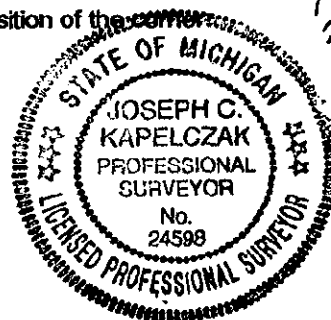
SURVEY &
REMONUMENTATION

MAY 22 1997

COMMISSION

C. Description of monument for corner and accessories established to perpetuate locating the position of the corner:

- Set Remonumentation Brass Cap.
S 13 E 143.27' set nail w/remon tag southwest side power pole
S 30 E 104.84' set nail w/remon tag southwest side power pole
S 43 E 126.36' set nail w/remon tag southwest side power pole
N 42 E 131.77' set nail w/remon tag northwest side power pole
S 47 W 136.67' set nail w/remon tag southeast side power pole



Signed by Joseph C. Kapelczak

Date 11-6-96

Surveyors Michigan License No. 24598