

**SURVEY & REMONUMENTATION**

Dec 18 96 3037 10

LIBER 16848 PG 769

MAY 22 1997

**LAND CORNER RECORDATION CERTIFICATE 7.00 MISCELLANEOUS RECORDING  
Filing Requirement of Act 74, Mich. P.A. 1970 2.00 REMONUMENTATION**

18 DEC 96 1:36 P.M. RECEIPT# 358  
PAID RECORDED - OAKLAND COUNTY  
LYNN D. ALLEN, CLERK/REGISTER OF DEEDS

**COMMISSION**

For corners in

Oakland  
(County)

Located in: Farmington Corner Code #  
Township

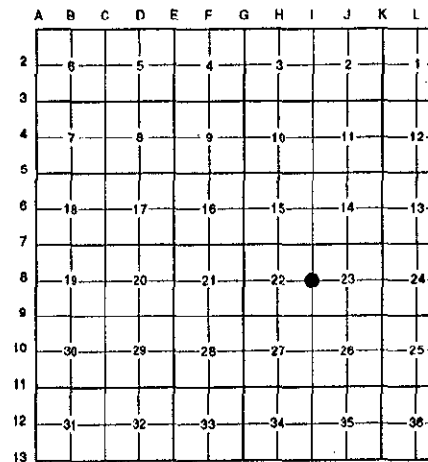
- |                                    |   |           |   |           |            |
|------------------------------------|---|-----------|---|-----------|------------|
| 1. Public Land Survey              | T | <u>1N</u> | R | <u>9E</u> | <u>1-8</u> |
|                                    | T |           | R |           |            |
|                                    | T |           | R |           |            |
|                                    | T |           | R |           |            |
| 2. Property Controlling in Section | S |           | T |           |            |
|                                    | S |           | T |           |            |
| 3. Miscellaneous Property in Sec.  | S |           | T |           |            |
|                                    | S |           | T |           |            |

Compliance with  
ACT 345, P.A. 1990

APPROVED ON: 10-23-96 JS  
OAKLAND COUNTY REMONUMENTATION  
PEER GROUP COMMITTEE  
Register of Deeds Stamp & File Number

4. Lot No. \_\_\_\_\_, Recorded Plat \_\_\_\_\_  
5. Private Claims \_\_\_\_\_

I, Randy Kolehouse, in a field survey on September 2 19 96, do hereby certify that under requirements of P.A. 74 Michigan P.A. of 1970, the corner points mentioned in lines 1 and 2 above were in conformance with regulations and rules therefore as required in the current manual of survey instructions of the United States Department of the interior, Bureau of Land Management or by a decree of a Court of Law and/or that the corner points mentioned in lines 3, 4 and 5 above were in conformance with the rules of the Michigan Board of Land Surveyors or by a Decree of a Court of Law; established, re-established, monumented, re-monumented, recovered, found as expressed below:



**NOTE: Not more than 4 corners, all in the same town and range, may be recorded on this certificate.**

**A. Description of original monument and accessories and/or subsequent restoration:**

I-8	1817	Wampler	G.L.O.	Set Post
	1952	Johnson	Supervisor's Plat No. 14 L. 69 P. 1	N/A
	1985	Milletics	Condominium L. 9091 P. 557-558	Capped Rebar

**B. Description of corner evidence found and/or method applied in restoring or reestablishing corner:**

I-8 Found rebar and cap #15066 per Jamestowne Square Condominiums L. 9091 P. 557-558 35' M/L West of the C/L of Orchard Lake Road. This corner checks closely the distance North to I-7 as shown in Supervisor's Plat No. 14 L. 69 P. 1 (1952).

Measure North 2667.97' to I-7 (G.L.O. = 2640.0') (Sup. Plat No. 14 = 2668.68')  
Measure South 2639.29' to I-9 (G.L.O. = 2640.0')

**C. Description of monument for corner and accessories established to perpetuate locating the position of the corner:**

I-8 Replaced the capped rebar with a 5/8" x 24" rebar with brass cap stamped "Oakland County Remonumentation P.S. #25854."

- Set PK Nail & Tag Stamped "Oakland Co. Remonumentation P.S. #25854" in NE Side P. Pole N 47° W 67.17'
- Set PK Nail & Tag Stamped "Oakland Co. Remonumentation P.S. #25854" in SE Side 12" Elm N 50° E 80.95'
- Set PK Nail & Tag Stamped "Oakland Co. Remonumentation P.S. #25854" in E Side 36" Willow S 23° W 56.48'
- Set PK Nail & Tag Stamped "Oakland Co. Remonumentation P.S. #25854" in SE Side 36" Willow S 74° W 108.11'

700 File  
202

The selected location is accepted by the Contractor and is generally accepted by professional surveyors as the best available evidence of the position of the original corner.

Signed by Randy J. Kolehouse Date 12/10/96  
EARTH TECH

Surveyor's Michigan License No. 25854

