

SURVEY & REMONUMENTATION

JN -9 97 1 2 4 4 8 4

LIBER 1727796708

MAR 04 1998

LAND CORNER RECORDATION CERTIFICATE
Filing Requirement of Act 74, Mich. P.A. 1970

Compliance with ACT 345, P.A. 1990

For corners in SECTION

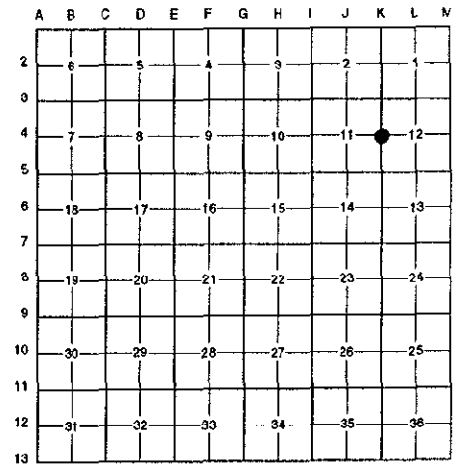
Oakland (County) Located in: Farmington Township Corner Code # K-4
1. Public Land Survey T 1N R 9E
2. Property Controlling in Section S T R
3. Miscellaneous Property in Sec. S T R

APPROVED ON: 4-16-97 FS
OAKLAND COUNTY REMONUMENTATION PEER GROUP COMMITTEE

\$ 7.00 MISCELLANEOUS RECORDING
\$ 2.00 REMONUMENTATION
9 JUN 97 12:23 P.M. RECEIPT# 94A
PAID RECORDED - OAKLAND COUNTY
LYNN D. ALLEN, CLERK/REGISTER OF DEEDS
Register of Deeds Stamp & File Number

4. Lot No. , Recorded Plat
5. Private Claims

I, Randy Kolehouse, in a field survey on April 8, 19 97, do hereby certify that under requirements of P.A. 74 Michigan P.A. of 1970, the corner points mentioned in lines 1 and 2 above were in conformance with regulations and rules therefore as required in the current manual of survey instructions of the United States Department of the Interior, Bureau of Land Management or by a decree of a Court of Law and/or that the corner points mentioned in lines 3, 4 and 5 above were in conformance with the rules of the Michigan Board of Land Surveyors or by a Decree of a Court of Law; established, re-established, monumented, re-monumented, recovered, found as expressed below:



NOTE: Not more than 4 corners, all in the same town and range, may be recorded on this certificate.

A. Description of original monument and accessories and/or subsequent restoration:

Table with 4 columns: K-4, Year, Name, G.L.O. Notes, Set Post. Rows include Wampler, McAlpine, Holly Hill Farms, Glenbrook, O.C. Road Commission Plans, and O.C. Tax Maps.

B. Description of corner evidence found and/or method applied in restoring or reestablishing corner:

K-4 Found a boat spike in a monument box in the C/L of Middlebelt Road (concrete) running North and South 60' East of a concrete plat monument at the NW corner of Pine Knolls Condo. Note: Found several existing witnesses for this point but no L.C.R.C. on record. Checks closely distances as shown in recorded plats and Oakland County tax records. Also checks the Oakland County Road Commission Plans for Middlebelt (1962).

Handwritten note: 7.00 FILE 2.00 ✓

Measure North 2649.03' to K-3 (G.L.O. = 2640.0') (Glenbrook Sub., Holly Hill Farms & Cove Creek Condo = 2651.3')
Measure South 2659.73' to K-5 (G.L.O. = 2640.0') (Hillside Sub. & Pine Knolls Condo = 2659.45') (O.C.R.C. Plans (1962) = 2659.34')

C. Description of monument for corner and accessories established to perpetuate locating the position of the corner:

K-4 Replaced boat spike with a 5/8" x 24" rebar with brass cap stamped "Oakland County Remonumentation P.S. #25854" in an existing monument box.

- List of monuments: PK Nail & Tag Stamped "Oakland Co. Remonumentation P.S. #25854" in S Side 15" Elm N 86° W 42.99', SW Side 24" Elm N 39° W 59.90', S Side MBT Pole East 45.38', SW Side 18" Poplar S 48° E 77.60', Concrete Monument (for Condo) N 86° W 59.86', Concrete Monument (for Condo) S 13° W 434.16', C/L Top Nut Hyd. S 41° W 81.02'

The selected location is accepted by the Contractor and is generally accepted by professional surveyors as the best available evidence of the position of the original corner.



Signed by Randy J. Kolehouse Date 5/29/97

Surveyor's Michigan License No. 25854