

SURVEY & REMONUMENTATION

DEC 18 96 305720

MAY 22 1997

LIBER 16848 PG 779

LAND CORNER RECORDATION CERTIFICATE
Filing Requirement of Act 74, Mich. P.A. 1970

COMMISSION
For corners in

Oakland
(County)

Located in: Farmington Corner Code #
Township

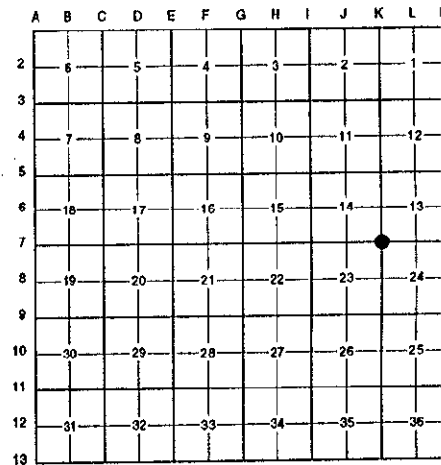
- | | | | |
|------------------------------------|-------------|-------------|------------|
| 1. Public Land Survey | T <u>1N</u> | R <u>9E</u> | <u>K-7</u> |
| | T _____ | R _____ | _____ |
| | T _____ | R _____ | _____ |
| | T _____ | R _____ | _____ |
| 2. Property Controlling in Section | S _____ | T _____ | R _____ |
| | S _____ | T _____ | R _____ |
| 3. Miscellaneous Property in Sec. | S _____ | T _____ | R _____ |
| | S _____ | T _____ | R _____ |

\$ 7.00 MISCELLANEOUS RECORDING
\$ 2.00 REMONUMENTATION
18 DEC 96 1:37 P.M.
PAID RECORDED - OAKLAND COUNTY
LYNN D. ALLEN, CLERK/REGISTER OF DEEDS

Compliance with ACT 345, P.A. 1990
APPROVED ON: 10-23-96 JS
OAKLAND COUNTY REMONUMENTATION FEE GROUP COMMITTEE
Register of Deeds Stamp & File Number

4. Lot No. _____, Recorded Plat _____
5. Private Claims _____

I, Randy Kolehouse, in a field survey on September 2, 19 96, do hereby certify that under requirements of P.A. 74 Michigan P.A. of 1970, the corner points mentioned in lines 1 and 2 above were in conformance with regulations and rules therefore as required in the current manual of survey instructions of the United States Department of the interior, Bureau of Land Management or by a decree of a Court of Law and/or that the corner points mentioned in lines 3, 4 and 5 above were in conformance with the rules of the Michigan Board of Land Surveyors or by a Decree of a Court of Law; established, re-established, monumented, re-monumented, recovered, found as expressed below:



NOTE: Not more than 4 corners, all in the same town and range, may be recorded on this certificate.

A. Description of original monument and accessories and/or subsequent restoration:

K-7	1817	Wampler	G.L.O.	Set Post
	1974	Pawlaczyk	L.C.R.C. L. 6327 P. 449	1" Pipe
	1974	Pawlaczyk	Rec. Survey #6327-445	1" Pipe
	1986	Graham	Cert. Survey	Monument Box
	1989	Milletics	Cert. Survey	N/A
	1995	Platz	L.C.R.C. L. 16037 P. 647	3/4" Pipe in a Monument Box
	1995	Platz	Rec. Survey 16037 P. 637	3/4" Pipe in a Monument Box
	N/A	N/A	Oakland Co. Road Commission Notes	Monument Box

B. Description of corner evidence found and/or method applied in restoring or reestablishing corner:

K-7 Found a 3/4" iron pipe in a monument box per Oakland County Road Commission notes on the C/L of 11 Mile Road running East and West and 7' M/L West of the C/L of Middle Belt pavement running North and South per L.C.R.C. L. 6327 P. 449 and L.C.R.C. L. 10637 P. 647. Checks distance West to J-7 and South to K-8 per Milletics' survey.

L.C.R.C. L. 6327 P. 449 (1974)	L.C.R.C. L. 10637 P. 647 (1995)
N.W. - Tag #5831 in S.W. Face U-Pole - 73.75'	Az. 55° 81.45'; P.K. Nail w/Tag #38121 in Northwest Face of Utility Pole
S.E. - Tag #5833 in S.W. Face U-Pole - 83.00'	Az. 140° 83.04'; G.W. Tag #5833 in Southwest Face of Utility Pole
S.W. - Tag #5832 in N.W. Face U-Pole - 68.93'	Az. 235° 68.94'; G.W. Tag #3832 in Northwest Face of Utility Pole
	Az. 318° 73.74'; G.W. Tag #5831 in Southwest Face of Utility Pole

Measure West 2634.94' to J-7 (G.L.O. = 2623.5') (M&A = 2634.87') (Springbrook Sub. No. 2 = 2633.7')
Measure East 2635.67' to L-7 (G.L.O. = 2625.48')
Measure South 2651.90' to K-8 (G.L.O. = 2640.0') (M&A = 2651.91') (PAE = 2651.92')

C. Description of monument for corner and accessories established to perpetuate locating the position of the corner:

K-7 Replaced the 3/4" iron with a 5/8" x 24" rebar with brass cap stamped "Oakland County Remonumentation P.S. #25854" in an existing monument box.

- Set PK Nail & Tag Stamped "Oakland Co. Remonumentation P.S. #25854" in SE Side Guy Pole S 62° W 68.93'
- Set PK Nail & Tag Stamped "Oakland Co. Remonumentation P.S. #25854" in SW Side P. Pole N 35° W 73.86'
- Set PK Nail & Tag Stamped "Oakland Co. Remonumentation P.S. #25854" in NW Side P. Pole N 63° E 81.42'
- Set PK Nail & Tag Stamped "Oakland Co. Remonumentation P.S. #25854" in SW Side P. Pole S 33° E 83.00'

The selected location is accepted by the Contractor and is generally accepted by professional surveyors as the best available evidence of the position of the original corner.

Signed by Randy J. Kolehouse Date 12/16/96
EARTH TECH
Surveyor's Michigan License No. 25854

