

SURVEY & REMONUMENTATION

Dec 18 96 3 05 722

LIBER 16848 PG 781

MAY 22 1997

COMMISSION

LAND CORNER RECORDATION CERTIFICATE
 Filing Requirement of Act 74, Mich. P.A. 1970

\$ 7.00 MISCELLANEOUS RECORDING
 \$ 2.00 REMONUMENTATION
 18 DEC 96 1:38 P.M. RECEIPT# 358
 PAID RECORDED - OAKLAND COUNTY
 LYNN D. ALLEN, CLERK/REGISTER OF DEEDS

For corners in

Oakland
 (County)

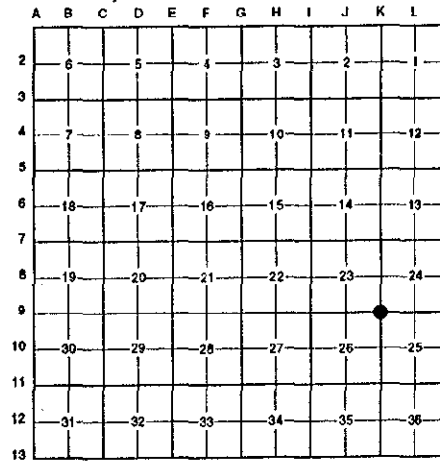
Located in: Farmington Corner Code #
 Township

- | | | | | | |
|------------------------------------|---|-----------|---|-----------|------------|
| 1. Public Land Survey | T | <u>1N</u> | R | <u>9E</u> | <u>K-9</u> |
| | T | | R | | |
| | T | | R | | |
| | T | | R | | |
| 2. Property Controlling in Section | S | | T | | |
| | S | | T | | |
| 3. Miscellaneous Property in Sec. | S | | T | | |
| | S | | T | | |

Compliance with
 ACT 345, P.A. 1990
 APPROVED ON: 10-23-96 JS
 OAKLAND COUNTY REMONUMENTATION
 PEER GROUP COMMITTEE
 Register of Deeds Stamp & File Number

4. Lot No. _____, Recorded Plat _____
 5. Private Claims _____

I, Randy Kolehouse, in a field survey on September 2, 19 96, do hereby certify that under requirements of P.A. 74 Michigan P.A. of 1970, the corner points mentioned in lines 1 and 2 above were in conformance with regulations and rules therefore as required in the current manual of survey instructions of the United States Department of the interior, Bureau of Land Management or by a decree of a Court of Law and/or that the corner points mentioned in lines 3, 4 and 5 above were in conformance with the rules of the Michigan Board of Land Surveyors or by a Decree of a Court of Law; established, re-established, monumented, re-monumented, recovered, found as expressed below:



NOTE: Not more than 4 corners, all in the same town and range, may be recorded on this certificate.

A. Description of original monument and accessories and/or subsequent restoration:

K-9	1817	Wampler	G.L.O.	Set Post
	N/A	N/A	L.C.R.C. L. 10206 P. 762	N/A
	1946	N/A	Sup. Middle Belt Ten Mile Road Sub. No. 1 L. 56 P. 54	N/A
	1946	N/A	Sup. Middle Belt Ten Mile Road Sub. No. 2 L. 58 P. 11	N/A
	1986	Gilmore	Cert Survey	N/A
	1987	Wilkerson	L.C.R.C. L. 10206 P. 762	Nail in Monument Box
	1993	Ward	L.C.R.C. L. 13584 P. 606	Monument Box

B. Description of corner evidence found and/or method applied in restoring or reestablishing corner:

K-9 Found a 1/2" boat spike 1.25' below grade in a broken monument box on the C/L intersection of 10 Mile Road running East and West and Middle Belt Road running North and South per L.C.R.C. L. 10206 P. 762 and L.C.R.C. L. 13584 P. 606. Checks distance South to K-10 per Supervisor's Middle Belt Ten Mile Road Sub. No. 1 and North to K-8 per Supervisor's Middle Belt Ten Mile Road Sub. No. 2 (1946).

L.C.R.C. L. 10206 P. 762
 N. 44° W. 54.06' P.K. Nail in E. Side D.E. Pole
 N. 34° E. 63.42' P.K. Nail in W. Side Guy Pole

L.C.R.C. L. 13584 P. 606 (1993)
 N. 45° W. 54.10' P.K. & Disc #22445 in N.E. face of utility pole
 S. 50° W. 60.82' P.K. & Disc #22445 in N.W. face of utility pole
 N. 35° E. 63.53' P.K. & Disc #22445 in S.E. face of utility pole

Measure South 2648.09' to K-10 (G.L.O. = 2640.0') (Sup. Middle Belt Ten Mile Road Sub. No. 1 = 2648.5')
 Measure North 2654.43' to K-8 (G.L.O. = 2640.0') (Sup. Middle Belt Ten Mile Road Sub. No. 2 = 2654.6')
 Measure East 2635.01' to L-9 (G.L.O. = 2623.2')
 Measure West 2628.77' to J-9 (G.L.O. = 2617.9')

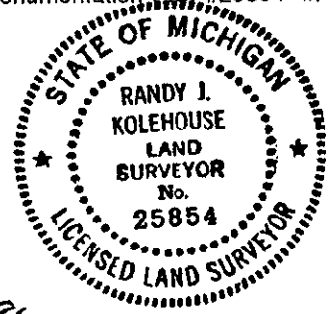
C. Description of monument for corner and accessories established to perpetuate locating the position of the corner:

K-9 Replaced the 1/2" boat spike with a 5/8" x 24" rebar with brass cap stamped "Oakland County Remonumentation P.S. #25854" in an existing monument box.

- Set PK Nail & Tag Stamped "Oakland Co. Remonumentation P.S. #25854" in N 32° W 54.16'
- Set PK Nail & Tag Stamped "Oakland Co. Remonumentation P.S. #25854" in S 63° W 60.93'
- Set PK Nail & Tag Stamped "Oakland Co. Remonumentation P.S. #25854" in S 35° E 56.31'
- Set PK Nail & Tag Stamped "Oakland Co. Remonumentation P.S. #25854" in N 47° E 63.91'

The selected location is accepted by the Contractor and is generally accepted by professional surveyors as the best available evidence of the position of the original corner.

Signed by Randy J. Kolehouse Date 12/10/96
 EARTH TECH
 Surveyor's Michigan License No. 25854



*700 File
 200*