

MAY 22 1997

COMMISSION

LAND CORNER RECORDATION CERTIFICATE

Filing Requirement of Act 74, Mich. P.A. 1970 § 7.00

Dec 18 96 305724

For corners in

Oakland (County)

Located in: Farmington Corner Code # Township

- 1. Public Land Survey T 1N R 9E K-11
2. Property Controlling in Section S T R
3. Miscellaneous Property in Sec. S T R

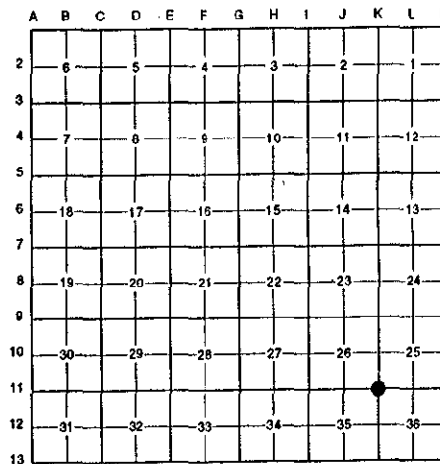
MISCELLANEOUS RECORDING \$ 2.00 REMONUMENTATION 18 DEC 96 1:38 P.M. RECEIPT# 358 PAID RECORDED - OAKLAND COUNTY LYNN D. ALLEN, CLERK/REGISTER OF DEEDS

Compliance with ACT 345, P.A. 1990 APPROVED ON: 10-23-96 TS OAKLAND COUNTY REMONUMENTATION PEER GROUP COMMITTEE

Register of Deeds Stamp & File Number

- 4. Lot No. Recorded Plat
5. Private Claims

I, Randy Kolehouse, in a field survey on September 2 19 96, do hereby certify that under requirements of P.A. 74 Michigan P.A. of 1970, the corner points mentioned in lines 1 and 2 above were in conformance with regulations and rules therefore as required in the current manual of survey instructions of the United States Department of the interior, Bureau of Land Management or by a decree of a Court of Law and/or that the corner points mentioned in lines 3, 4 and 5 above were in conformance with the rules of the Michigan Board of Land Surveyors or by a Decree of a Court of Law; established, re-established, monumented, re-monumented, recovered, found as expressed below:



NOTE: Not more than 4 corners, all in the same town and range, may be recorded on this certificate.

A. Description of original monument and accessories and/or subsequent restoration:

Table with 4 columns: Monument ID (K-11 1817, 1890, 1925, 1950, N/A), Name (Wampler, Russell, N/A, Gillespie, Alix), Material (G.L.O., N/A, Waddell, Wilcox, Ryman Co. Kemberton Park Sub. L. 36 P. 27, Survey, Cert. Survey), and Status (Set Post, N/A, N/A, N/A, N/A).

B. Description of corner evidence found and/or method applied in restoring or reestablishing corner:

K-11 Found a 1/2" boat spike in a monument box on the C/L intersection of 9 Mile Road running East and West and Middle Belt Road running North and South. None of the above have witnesses to this corner. Checks distance North to K-10 per Kemberton Park Sub. L. 36 P. 27 (1925).

- Measure North 2649.01' to K-10 (G.L.O. = 2640.0') (Kemberton Park Sub. = 2649.08')
Measure South 2666.94' to K-12 (G.L.O. = 2640.0')
Measure East 2631.68' to L-11 (G.L.O. = 2624.5')
Measure West 2629.84' to J-11 (G.L.O. = 2618.5')

C. Description of monument for corner and accessories established to perpetuate locating the position of the corner:

K-11 Replaced the 1/2" boat spike with a 5/8" x 24" rebar with brass cap stamped "Oakland County Remonumentation P.S. #25854" in an existing monument box.

- Set PK Nail & Tag Stamped "Oakland Co. Remonumentation P.S. #25854" in SE Side 4" Cherry S 44° W 90.08'
Set PK Nail & Tag Stamped "Oakland Co. Remonumentation P.S. #25854" in NE Side Pole N 46° W 81.07'
Set PK Nail & Tag Stamped "Oakland Co. Remonumentation P.S. #25854" in SE Side Util. Pole N 59° E 81.77'
"X" Cut in Conc. Sidewalk N 39° W 68.17'
C/L Top Hydrant S 21° E 77.88'
NE Cor. Sq. CB at Back Curb S 17° E 71.33'

The selected location is accepted by the Contractor and is generally accepted by professional surveyors as the best available evidence of the position of the original corner.

Signed by Randy J. Kolehouse Date 12/10/96
EARTH TECH
Surveyor's Michigan License No. 25854

