

SURVEY & REMONUMENTATION

Mar 10 95 040396

LIBER 15288 PG 482

MAY - 1 1995

LAND CORNER RECORDATION CERTIFICATE

OK - T. SMITH

Filing Requirement of Act 74, Mich. P.A. 1970

\$ 7.00 MISC RECORDING CHG - IN HOUSE
10 MAR 95 3:56 P.M. RECEIPT# 177B
PAID RECORDED - OAKLAND COUNTY
LYNN D. ALLEN, CLERK/REGISTER OF DEEDS

COMMISSION

For corners in Oakland

Commerce Twp.

\$ 2.00 REMON CHG - IN HOUSE

Compliance with ACT 345, P.A. 1990

APPROVED ON: 12-13-94
OAKLAND COUNTY REMONUMENTATION PEER GROUP COMMITTEE

Register of Deeds Stamp & File Number

(County)	Located In:	Corner Code #
	2N 8E	B-5
1. Public Land Survey	T R	
	T R	
	T R	
	T R	
2. Property Controlling in Section	S T R	
	S T R	
3. Miscellaneous Property in Sec.	S T R	
	S T R	

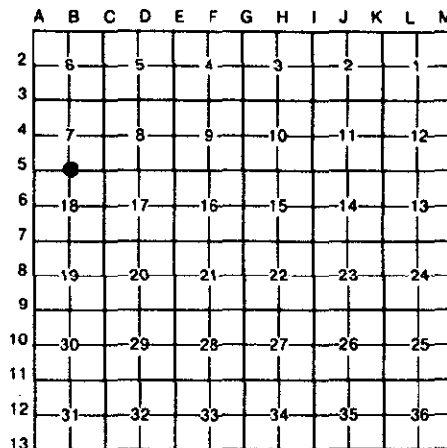
4. Lot No. _____, Recorded Plat _____
5. Private Claims _____

David Pawlaczyk

December 2

94

I, _____, in a field survey on _____, 19____, do hereby certify that under requirements of P.A. 74, Michigan P.A. of 1970, the corner points mentioned in lines 1 and 2 above were in conformance with regulations and rules therefore as required in the current manual of survey instructions of the United States Department of the Interior, Bureau of Land Management or by a decree of a Court of Law and/or that the corner points mentioned in lines 3, 4 and 5 above were in conformance with the rules of the Michigan Board of Land Surveyors or by a Decree of a Court of Law; established, re-established, monumented, re-monumented, recovered, found as expressed below:



NOTE: Not more than 4 corners, all in the same town and range, may be recorded on this certificate.

A. Description of original monument and accessories and/or subsequent restoration:

Date	Description	Survey	Witness	Plat	Notes
1815	Post	G.L.O.	A. Holmes	N/A	
1976	1/2" Iron in monument box	Survey	W. Carnahan	#13029	L6840 P144
1977	Iron in monument box	Survey	A. Leach	#7236	L7190 P519
1981	1/2" Iron in monument box	L.C.R.C.	H. Kennedy	#17623	L8096 P222

B. Description of corner evidence found and/or method applied in restoring or reestablishing corner:

A 1/2" iron rod in an existing monument box in asphalt pavement currently occupies this corner. The following witness ties were used to recover and verify this corner's position:

- 1 tie from Survey witnesses L6840 P144
- 3 ties from survey witnesses L7190 P519

Field measurements were made between the following corners:

From Corner	To Corner	Distance	Measurement	Notes
B-5 to A-5	2907.42	meas.		
	2907.15	rec.	Property desc.	Oakland County Planning & Plats L91, P26
	2897.40	rec.	G.L.O.	Notes
B-5 to C-5	2628.21	meas.		
	2640.00	rec.	G.L.O.	Notes
	2629.17	rec.	Prop. Desc.	Oakland County Planning

C. Description of monument for corner and accessories established to perpetuate locating the position of the corner:

I placed a 2" diameter brass cap stamped "Oakland County Remonumentation PS #17632" on the existing 1/2" iron rod in an existing monument box in asphalt pavement.

Due North	60.03'	Concrete monument
N.73° E.	201.17'	Concrete monument
S.03° W.	50.97'	P.K. nail and O.C.R. tag in W. face 20" Oak
S.48° W.	60.66'	P.K. nail and O.C.R. tag in N.W. face 8" Birch
N.63° W.	133.02'	Found 1/2" iron rod



The selected location is accepted by me and generally accepted by Professional Surveyors as the best available evidence of the position of the original corner.

Signed by _____

Date 2-16-95

Surveyor's Michigan License No. 17632