

SURVEY & REMONUMENTATION

LIBER **15288** PG **484**

MAR 10 95 010398

MAY - 1 1995

OK - T. SMITH

COMMISSION

LAND CORNER RECORDATION CERTIFICATE 7.00 MISC RECORDING CHG - IN HOUSE
 Filing Requirement of Act 74, Mich. P.A. 1970 2.00 REMON CHG - IN HOUSE
 Commerce Twp.

For corners in Oakland

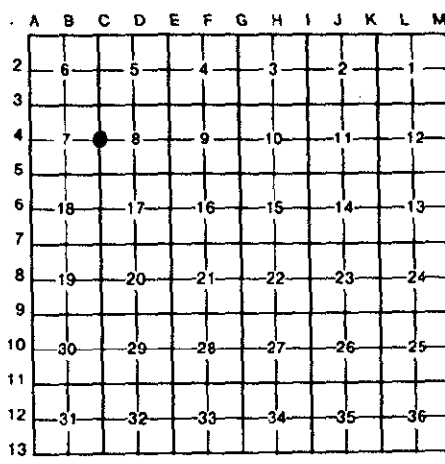
10 MAR 95 3:57 P.M. RECEIPT# 1778
 PAID RECORDED - OAKLAND COUNTY
 LYNN D. ALLEN, CLERK/REGISTER OF DEEDS

| (County) | Located In: | Corner Code # |
|------------------------------------|-------------|---------------|
| 1. Public Land Survey | T 2N R 8E | C-4 |
| | T R | |
| | T R | |
| | T R | |
| 2. Property Controlling in Section | S T R | |
| | S T R | |
| 3. Miscellaneous Property in Sec. | S T R | |
| | S T R | |

Compliance with ACT 345, P.A. 1990
 APPROVED ON: 12-27-94
 OAKLAND COUNTY REMONUMENTATION PEER GROUP COMMITTEE

Register of Deeds Stamp & File Number

- 4. Lot No. _____, Recorded Plat _____
- 5. Private Claims _____



I, David Pawlaczyk, in a field survey on December 16, 1994, do hereby certify that under requirements of P.A. 74, Michigan P.A. of 1970, the corner points mentioned in lines 1 and 2 above were in conformance with regulations and rules therefore as required in the current manual of survey instructions of the United States Department of the Interior, Bureau of Land Management or by a decree of a Court of Law and/or that the corner points mentioned in lines 3, 4 and 5 above were in conformance with the rules of the Michigan Board of Land Surveyors or by a Decree of a Court of Law; established, re-established, monumented, re-monumented, recovered, found as expressed below:

NOTE: Not more than 4 corners, all in the same town and range, may be recorded on this certificate.

A. Description of original monument and accessories and/or subsequent restoration:

| Date | Description | Surveyor | Notes |
|------|---------------|-------------------|-------|
| 1815 | Post | G.L.O. A. Holmes | n/a |
| 1974 | Concrete mon. | L.C.R.C. A. Leach | #7236 |

B. Description of corner evidence found and/or method applied in restoring or reestablishing corner:

A concrete monument falling at the south face of a wood fence post currently occupies this corner. The following ties were used to recover and verify its position:

3 ties match L.C.R.C. L6387 P492

7.00
2.00

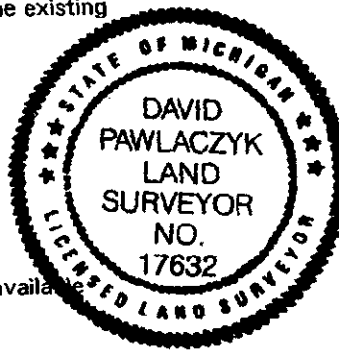
Field measurements were made between the following corners:

| Corner Pair | Distance | Measurement | Surveyor | Notes |
|-------------|----------|-------------|----------|-------------|
| C-4 to C-3 | 2638.31 | meas. | | |
| | 2640.00 | rec. | G.L.O. | Notes |
| C-4 to C-5 | 2647.76 | meas. | | |
| | 2640.00 | rec. | G.L.O. | Notes |
| | 2648.18 | rec. | Plats | L171 P33-35 |

C. Description of monument for corner and accessories established to perpetuate locating the position of the corner:

I placed a 2" diameter brass cap stamped "Oakland County Remonumentation P.S. 17632" on the existing concrete monument.

| Direction | Distance | Monument |
|-----------|----------|---|
| Due east | 60.02' | Concrete monument |
| Due west | 60.05' | 1/2 Iron rod |
| S.10° E. | 71.36' | P.K. nail and O.C.R. tag N.E. face Twin 10" Maple |
| S.45° E. | 24.05' | P.K. nail and O.C.R. tag S.W. face 14" Oak |
| Due West | +18.0' | East b/c pavement |



The selected location is accepted by me and generally accepted by Professional Surveyors as the best available evidence of the position of the original corner.

Signed by [Signature] Date 2-16-95

Surveyor's Michigan License No. 17632