

MAR 11 1999

LAND CORNER RECORDATION CERTIFICATE  
Filing Requirement of Act 74, Mich. P.A. 1970

For corners in SECTION

<u>Oakland</u> (County)	Located in: Commerce Township	Corner Code # C-6
1. Public Land Survey	T <u>2N</u> R <u>8E</u>	<u>C-6</u>
	T _____ R _____	_____
	T _____ R _____	_____
	T _____ R _____	_____
2. Property Controlling in Section	S _____ T _____ R _____	_____
	S _____ T _____ R _____	_____
3. Miscellaneous Property in Sec.	S _____ T _____ R _____	_____
	S _____ T _____ R _____	_____
4. Lot No. _____, Recorded Plat _____		
5. Private Claims _____		

10-69832

**\$9.00 MISCELLANEOUS RECORDING**  
**\$ 2.00 REMONUMENTATION**  
 6 NOV 98 Compliance with ACT 74, P.A. 1990  
 PAID RECORDED OAKLAND COUNTY  
 06-98-33  
 APPROVED BY: CADDELL  
 OAKLAND COUNTY REMONUMENTATION  
 PEER GROUP COMMITTEE  
 Register of Deeds Stamp & File Number

I, Randy Kolehouse, in a field survey on June 9 19 98, do hereby certify that under requirements of P.A. 74 Michigan P.A. of 1970, the corner points mentioned in lines 1 and 2 above were in conformance with regulations and rules therefore as required in the current manual of survey instructions of the United States Department of the interior, Bureau of Land Management or by a decree of a Court of Law and/or that the corner points mentioned in lines 3, 4 and 5 above were in conformance with the rules of the Michigan Board of Land Surveyors or by a Decree of a Court of Law; established, re-established, monumented, re-monumented, recovered, found as expressed below:

**NOTE: Not more than 4 corners, all in the same town and range, may be recorded on this certificate.**

A. Description of original monument and accessories and/or subsequent restoration:

C-6	1823	Wampler	G.L.O. Notes	Set Post
	N/A	N/A	O.C. Tax Maps	N/A

B. Description of corner evidence found and/or method applied in restoring or reestablishing corner:

C-6 Found no information on record for this corner falls in a swamp within the Proud Lake State Recreation Area. Calculated the location of this corner on a straight line between C-5 and C-7 at its mid-point. Set **reference monument** on Section line 549.75' South of C-6.

Measure North 2639.06' to C-5 (G.L.O. = 2640.0')  
 Measure South 2639.06' to C-7 (G.L.O. = 2640.0')

500  
200

C. Description of monument for corner and accessories established to perpetuate locating the position of the corner:

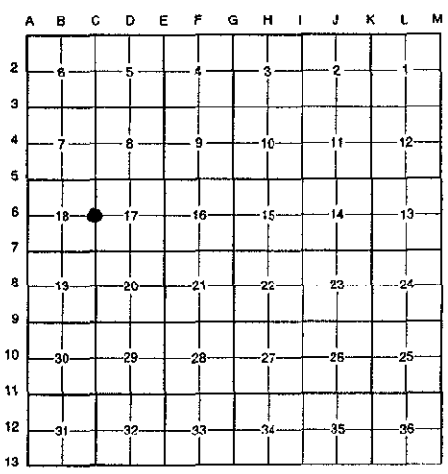
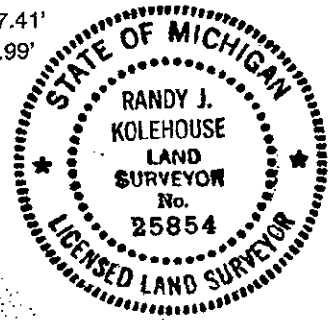
C-6 Set a 5/8" x 24" rebar with brass cap stamped "Oakland County Remonumentation P.S. #25854" as a reference monument 550.50' South of C-6.

- PK Nail & Tag Stamped "Oakland Co. Remonumentation P.S. #25854" in S Side 12" Beech N 85° E 19.21'
- PK Nail & Tag Stamped "Oakland Co. Remonumentation P.S. #25854" in E Side 32" Oak S 10° W 15.90'
- PK Nail & Tag Stamped "Oakland Co. Remonumentation P.S. #25854" in SE Side 24" Oak S 70° W 17.41'
- PK Nail & Tag Stamped "Oakland Co. Remonumentation P.S. #25854" in NE Side 16" Oak N 60° W 8.99'
- PK Nail & Tag Stamped "Oakland Co. Remonumentation P.S. #25854" in E Side 10" Oak North 8.18'
- C/L Walking Path South 3.0'

See sketch on back.

The selected location is accepted by the Contractor and is generally accepted by professional surveyors as the best available evidence of the position of the original corner.

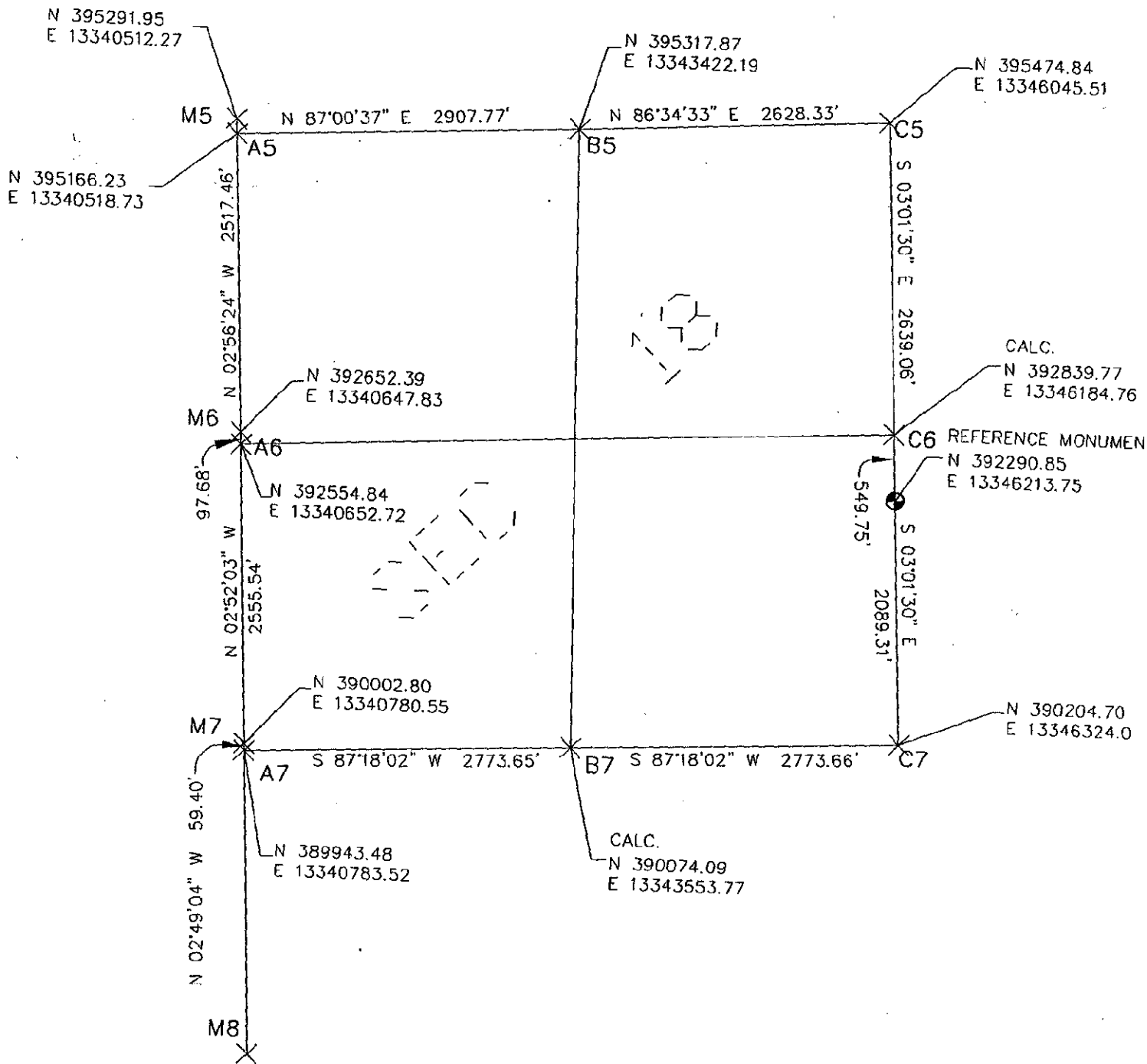
Signed by Randy J. Kolehouse Date Aug 3, 1998  
 EARTH TECH  
 Surveyor's Michigan License No. 25854



MAR 11 1999

LIBER 19142PG301

SECTION



NOTE: DISTANCES ARE MEASURED AT GROUND AND COORDINATES ARE ON GRID