

SURVEY & REMONUMENTATION

MAR 10 95 4 25

LISER 15288pc511

MAY - 1 1995

LAND CORNER RECORDATION CERTIFICATE

Filing Requirement of Act 74, Mich. P.A. 1970
Commerce Twp.

\$ 7.00 MISC RECORDING CHG - IN HOUSE
\$ 2.00 REMON CHG - IN HOUSE
MAR 95 4:02 P.M. RECEIPT# 1778
RECORDED - OAKLAND COUNTY
LYNN D. ALLEN, CLERK/REGISTER OF DEEDS

For corners in **COMMISSION**
Oakland

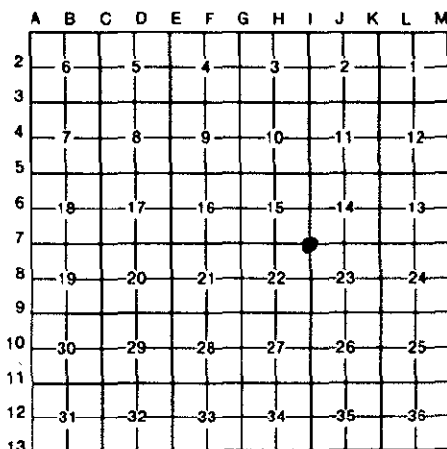
(County)	Located In:	Corner Code =#
1. Public Land Survey	T <u>2N</u> R <u>8E</u>	<u>I-7</u>
	T _____ R _____	_____
	T _____ R _____	_____
	T _____ R _____	_____
2. Property Controlling in Section	S _____ T _____ R _____	_____
	S _____ T _____ R _____	_____
3. Miscellaneous Property in Sec.	S _____ T _____ R _____	_____
	S _____ T _____ R _____	_____

Compliance with ACT 345, P.A. 1990
APPROVED ON: 12-5-94
OAKLAND COUNTY REMONUMENTATION PEER GROUP COMMITTEE
OK - T. SMITH
Register of Deeds Stamp & File Number

4. Lot No. _____, Recorded Plat _____
5. Private Claims _____

David Pawlaczyk November 24 94

I, _____, in a field survey on _____, 19 _____, do hereby certify that under requirements of P.A. 74, Michigan P.A. of 1970, the corner points mentioned in lines 1 and 2 above were in conformance with regulations and rules therefore as required in the current manual of survey instructions of the United States Department of the Interior, Bureau of Land Management or by a decree of a Court of Law and/or that the corner points mentioned in lines 3, 4 and 5 above were in conformance with the rules of the Michigan Board of Land Surveyors or by a Decree of a Court of Law; established, re-established, monumented, re-monumented, recovered, found as expressed below:



NOTE: Not more than 4 corners, all in the same town and range, may be recorded on this certificate.

A. Description of original monument and accessories and/or subsequent restoration:

Date	Description	Surveyor	Accessories	Notes
1815	Post	G.L.O.	A. Holmes	N/A
1984	Large bolt in mon. box	L.C.R.C.	H. Kennedy	#17623 L8653 P527
1992	Found spike	Survey	R. Kostecke	#12584 L13378 P350
1993	Square iron in mon. box	L.C.R.C.	J. Kapelczak	#24598 L13682 P798

B. Description of corner evidence found and/or method applied in restoring or reestablishing corner:

A 3/4" square rod in a monument box in asphalt pavement currently occupies this corner. The following witness ties were used to recover and verify its position:

- 2 ties from L.C.R.C. L13682 P798
- 1 tie from L.C.R.C. L8653 P527

Field measurements were made between the following corners:

From Corner	To Corner	Distance	Method	Notes
I-7 to I-6		2634.69	meas.	
		2640.00	rec.	G.L.O. Notes
		2635.19	rec.	Survey L8206 P182
		2634.75	rec.	Survey L13827 P679
		2634.75	rec.	Survey L13378 P350
		2634.94	rec.	Plats L226 P19
I-7 to J-7		2664.80	meas.	
		2659.00	rec.	G.L.O. Notes
I-7 to I-8		2625.38	meas.	
		2640.00	rec.	G.L.O. Notes

C. Description of monument for corner and accessories established to perpetuate locating the position of the corner:

I replaced the 3/4" rod with a 5/8" x 24" iron rod with a 2" diameter brass cap stamped "Oakland County Remonumentation PS #17632" in an existing monument box in asphalt pavement.

- N.63° W. 89.92' P.K. nail and O.C.R. tag in N.E. face 12" Oak
- N.47° E. 76.97' P.K. nail and O.C.R. tag in N.W. face light pole
- S.36° E. 39.40' P.K. nail and O.C.R. tag in S.W. face D.E. pole
- S.54° W. 53.91' P.K. nail & O.C.R. tag in N.W. face D.E. pole

The selected location is accepted by me and generally accepted by Professional Surveyors as the best available evidence of the position of the original corner.

Signed by [Signature] Date 2-16-95
Surveyor's Michigan License No. 17632

