

MAR 11 1999

LAND CORNER RECORDATION CERTIFICATE
Filing Requirement of Act 74, Mich. P.A. 1970

SECTION

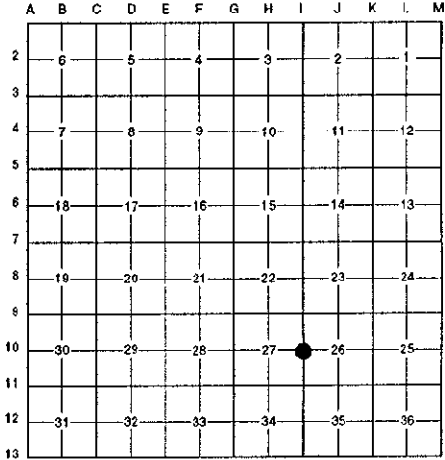
For corners in

Oakland (County)	Located in: Commerce Township	Corner Code #
1. Public Land Survey	T <u>2N</u> R <u>8E</u>	<u>I-10</u>
	T _____ R _____	_____
	T _____ R _____	_____
	T _____ R _____	_____
2. Property Controlling in Section	S _____ T _____ R _____	_____
	S _____ T _____ R _____	_____
3. Miscellaneous Property in Sec.	S _____ T _____ R _____	_____
	S _____ T _____ R _____	_____

\$ 7.00 MISCELLANEOUS RECORDING
\$ 2.00 REMONUMENTATION
6 NOV 98 10:00 A.M. RECEIPT# 284
PAID ^{Comptroller} RECORDED ^{with} OAKLAND COUNTY
G. WILLIAM CADDELL
APR 1999 REGISTER OF DEEDS 58 05
OAKLAND COUNTY REMONUMENTATION
PEER GROUP COMMITTEE
Register of Deeds Stamp & File Number

- 4. Lot No. _____, Recorded Plat _____
- 5. Private Claims _____

I, Randy Kolehouse, in a field survey on December 4 19 97, do hereby certify that under requirements of P.A. 74 Michigan P.A. of 1970, the corner points mentioned in lines 1 and 2 above were in conformance with regulations and rules therefore as required in the current manual of survey instructions of the United States Department of the interior, Bureau of Land Management or by a decree of a Court of Law and/or that the corner points mentioned in lines 3, 4 and 5 above were in conformance with the rules of the Michigan Board of Land Surveyors or by a Decree of a Court of Law; established, re-established, monumented, re-monumented, recovered, found as expressed below:



NOTE: Not more than 4 corners, all in the same town and range, may be recorded on this certificate.

A. Description of original monument and accessories and/or subsequent restoration:

I-10	1823	Wampler	G.L.O. Notes	Set Post
	1941	Barnett	Wolverine Bluffs Sub. L. 47 P. 56	Stone?
	1955	Giffels	Penny Lake Woods Sub. L. 78 P. 4	N/A
	1956	Postiff	Penny Lake Woods Sub. #1 L. 88 P. 1	N/A
	N/A	N/A	O.C. Tax Maps	N/A

B. Description of corner evidence found and/or method applied in restoring or reestablishing corner:

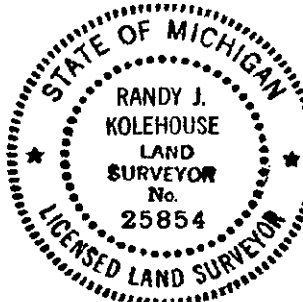
I-10 Found a 1/2" iron rod in a 4" diameter concrete plat monument 65.5' West of the C/L of South Commerce Road (bit.) running approximately North and South, on line of old fence line running East. This plat monument is at the Northeast corner of Lot 4 of Penny Lake Woods Sub. L. 78 P. 4 and checks recorded distance within Penny Lake Woods Sub. Also checks Lot 28 recorded distance per Penny Lake Woods Sub. #1 L. 88 P. 1. This corner is shown as the 1/4 corner commons to Section 27 and 28 in both Penny Lake Woods and Penny Lake Woods #1. Accepted found concrete monument as the corner.

*700
200*

Measure North 2643.5' to I-9 (G.L.O. = 2640.0')
Measure South 2640.9' to I-11 (G.L.O. = 2640.0')

C. Description of monument for corner and accessories established to perpetuate locating the position of the corner:

I-10 Set a brass cap stamped "Oakland County Remonumentation P.S. #25854" on an existing concrete monument.
PK Nail & Tag Stamped "Oakland Co. Remonumentation P.S. #25854" in N Face 36" Oak S 68° W 28.10'
PK Nail & Tag Stamped "Oakland Co. Remonumentation P.S. #25854" in NE'ly Face P. Pole S 46° E 84.65'
PK Nail & Tag Stamped "Oakland Co. Remonumentation P.S. #25854" in S'ly Face P. Pole S 86° E 41.28'
PK Nail & Tag Stamped "Oakland Co. Remonumentation P.S. #25854" in N Face P. Pole N 50° E 94.18'
SE Corner House #1615 South Commerce Road N 40° W 106.78'
SE Corner House #1607 South Commerce Road N 80° W 71.98'



The selected location is accepted by the Contractor and is generally accepted by professional surveyors as the best available evidence of the position of the original corner.

Signed by Randy J. Kolehouse Date Aug. 3, 1998
EARTH TECH
Surveyor's Michigan License No. 25854