

MAR 11 1999

LIBER 19142PC314

LAND CORNER RECORDATION CERTIFICATE
Filing Requirement of Act 74, Mich. P.A. 1970

SECTION
For corners in

Table with columns: Oakland (County), Located in: Commerce Township, Corner Code #. Rows include Public Land Survey, Property Controlling in Section, Miscellaneous Property in Sec., Lot No., and Private Claims.

MISCELLANEOUS RECORDING \$ 7.00
REMONUMENTATION \$ 2.00
6 NOV 98 10:02 A.M. RECEIPT# 28A
PAID RECORDED - OAKLAND COUNTY
G. WILLIAM CADDELL
CLERK/REGISTER OF DEEDS
Compliance with ACT 345, P.A. 1990
APPROVED ON: 05-06-98 JS
OAKLAND COUNTY REMONUMENTATION PEER GROUP COMMITTEE
Register of Deeds Stamp & File Number

100-608202807

I, Randy Kolehouse, in a field survey on December 12 19 97, do hereby certify that under requirements of P.A. 74 Michigan P.A. of 1970, the corner points mentioned in lines 1 and 2 above were in conformance with regulations and rules therefore as required in the current manual of survey instructions of the United States Department of the interior, Bureau of Land Management or by a decree of a Court of Law and/or that the corner points mentioned in lines 3, 4 and 5 above were in conformance with the rules of the Michigan Board of Land Surveyors or by a Decree of a Court of Law; established, re-established, monumented, re-monumented, recovered, found as expressed below:

NOTE: Not more than 4 corners, all in the same town and range, may be recorded on this certificate.

A. Description of original monument and accessories and/or subsequent restoration:

Table with columns: K-2, 1823, Wampler, G.L.O. Notes, Set Post. Rows list various monuments like Liddicoat, Stonerock, and O.C. Tax Map.

B. Description of corner evidence found and/or method applied in restoring or reestablishing corner:

K-2 Found a 1/2" iron rod 18' ± East of telephone line running North and South and 395' ± South of the C/L of Oakside Avenue as established by G. Stonerock using Huron Woods Sub. in 1972. This iron is on the west line of Huron Woods Subdivision and checks Measured=89.75' (Record=89.67') North of the Northwest corner of Outlot A of said Subdivision. Accepted iron found as the corner.

L.C.R.C. L. 5830 P. 547 (1972)
PK Nail N Face 30" Oak S 80° E 24.33' (m. 24.31')
Scar N Face 18" Oak S 88° W 33.55' ± (m. 33.51')

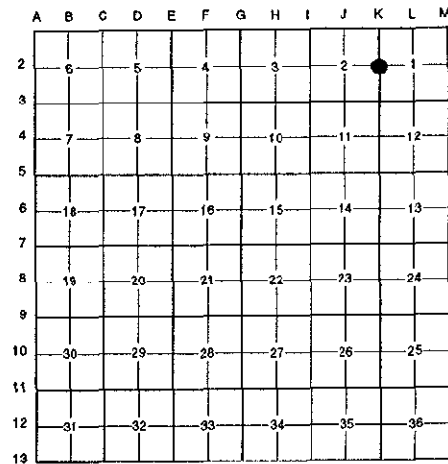
Measure South 2689.1' to K-3 (G.L.O. = 2640.00')
Did not measure North as corner falls in Long Lake. Calc. dist. = 2,760.85' to a line between J-1 and L-1.

C. Description of monument for corner and accessories established to perpetuate locating the position of the corner:

K-2 Replaced 1/2" iron rod with a 4" concrete monument with brass cap stamped "Oakland County Remonumentation P.S. #25854."
PK Nail & Tag Stamped "Oakland Co. Remonumentation P.S. #25854" in E Face 8" White Pine N 12° W 6.34'
PK Nail & Tag Stamped "Oakland Co. Remonumentation P.S. #25854" in N Face 30" Oak S 80° E 24.31'
PK Nail & Tag Stamped "Oakland Co. Remonumentation P.S. #25854" in NW Face 18" Oak S 88° W 33.51'
PK Nail & Tag Stamped "Oakland Co. Remonumentation P.S. #25854" in N Fac 3 0" Oak S 40° W 52.70'
1/2" Iron w/Cap #13029 S 04° W 89.75 (R=89.67' to Northwest Corner Outlot A)

The selected location is accepted by the Contractor and is generally accepted by professional surveyors as the best available evidence of the position of the original corner.

Signed by Randy J. Kolehouse Date Aug 3, 1998
EARTH TECH
Surveyor's Michigan License No. 25854



Handwritten note: 700, 200

