

MAR 11 1999

LIBER 19142 REC 322

10-6-98 323814

LAND CORNER RECORDATION CERTIFICATE \$ 9.00 MISCELLANEOUS RECORDING
Filing Requirement of Act 74, Mich. P.A. 1970 \$ 2.00 REMONUMENTATION

6 NOV 98 10:02 A.M. RECEIPT# 28A
PAID RECORDED - OAKLAND COUNTY
G. WILLIAM CADDELL
CLERK/REGISTER OF DEEDS

Compliance with
ACT 345, P.A. 1990

APPROVED ON: 5-06-98 JS
OAKLAND COUNTY REMONUMENTATION
PEER GROUP COMMITTEE

Register of Deeds Stamp & File Number

SECTION

For corners in

Oakland
(County)

Located in: Commerce Corner Code #
Township

- 1. Public Land Survey T 2N R 8E L-3
T _____ R _____
T _____ R _____
T _____ R _____
- 2. Property Controlling S _____ T _____ R _____
in Section S _____ T _____ R _____
- 3. Miscellaneous S _____ T _____ R _____
Property in Sec. S _____ T _____ R _____

- 4. Lot No. _____, Recorded Plat _____
- 5. Private Claims _____

I, Randy Kolehouse, in a field survey on January 15 19 98, do hereby certify that under requirements of P.A. 74 Michigan P.A. of 1970, the corner points mentioned in lines 1 and 2 above were in conformance with regulations and rules therefore as required in the current manual of survey instructions of the United States Department of the interior, Bureau of Land Management or by a decree of a Court of Law and/or that the corner points mentioned in lines 3, 4 and 5 above were in conformance with the rules of the Michigan Board of Land Surveyors or by a Decree of a Court of Law; established, re-established, monumented, re-monumented, recovered, found as expressed below:

NOTE: Not more than 4 corners, all in the same town and range, may be recorded on this certificate.

A. Description of original monument and accessories and/or subsequent restoration:

L-3	1823	Wampler	G.L.O. Notes	Set Post
	1958	Manzel	Morey's Manor Sub. L. 88 P. 7	N/A
	1960	Zalmet	Golf Manor Sub. #3 L. 100 P. 38	N/A
	N/A	N/A	O.C. Tax Maps	N/A

B. Description of corner evidence found and/or method applied in restoring or reestablishing corner:

L-3 This corner was set by the G.L.O. at the midpoint of the section line common to Sections 1 and 12 (G.L.O. = 5398.8' 1/2 = 2699.4'). Found no recorded information for this corner. Morey's Manor Sub. (1958) L. 88 P. 7 illustrates the South line of said subdivision as being on the South line of Section 1 and the Southwest corner of said subdivision being the Southwest corner of the East 1/2 of the Southwest 1/4. No reference given to L-3. Golf Manor Sub. #3 (1960) L. 100 P. 38 honors the South line of Morey's Manor Sub. As the South line of Section 1 (North line of Section 12) but shows a deflection at the Southwest corner of the East 1/2 Southwest 1/4 Section 1. No reference given for L-3. Using found monument in Morey's Manor Sub. reconstructed said subdivision and established the South line of Morey's Manor Sub. and the Southeast corner of the East 1/2 Southwest 1/4. Checks the recorded deflection to K-3 as shown in Golf Manor Sub. #3 Rec. = 174° 40' 30" East-North-West Meas. 174° 38' 38" Measured to K-3 Rec. = 1349.20' Meas. 1349.78'. Decided to honor the South line of Morey's Manor Sub. as the Section line between 1 and 2 and placed L-3 at double the distance between K-3 and the Southwest corner of the East 1/2 Southwest 1/4 of Section 1. (See sketch).

Measure East 2719.80' to M-3 (G.L.O. = 2699.4')
Measure West 2699.56' to K-3 (G.L.O. = 2699.4')

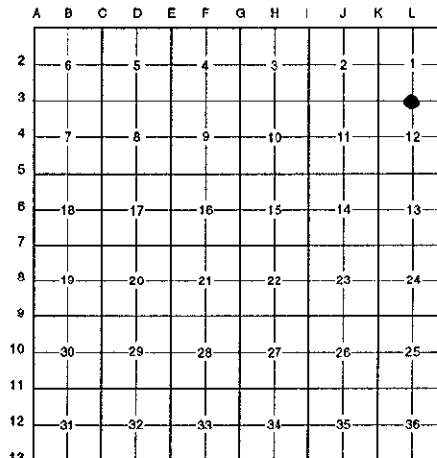
C. Description of monument for corner and accessories established to perpetuate locating the position of the corner:

- L-3 Set a 5/8" x 24" rebar with brass cap stamped "Oakland County Remonumentation P.S. #25854." Also set a new monument box.
PK Nail & Tag Stamped "Oakland Co. Remonumentation P.S. #25854" in S Face 24" Oak S 85° E 29.54'
PK Nail & Tag Stamped "Oakland Co. Remonumentation P.S. #25854" in N Face 22" Oak S 85° W 15.53'
PK Nail & Tag Stamped "Oakland Co. Remonumentation P.S. #25854" in S Face 8" Pine S 15° W 17.68'
PK Nail & Tag Stamped "Oakland Co. Remonumentation P.S. #25854" in S Face Triple Apple N 78° E 28.20'

The selected location is accepted by the Contractor and is generally accepted by professional surveyors as the best available evidence of the position of the original corner.

Signed by Randy J. Kolehouse Date Aug 31, 1998
EARTH TECH

Surveyor's Michigan License No. 25854



JS
JS



