

MAR 11 1999

LIBER 19142PG319

LAND CORNER RECORDATION CERTIFICATE
Filing Requirement of Act 74, Mich. P.A. 1970

SECTION

For corners in

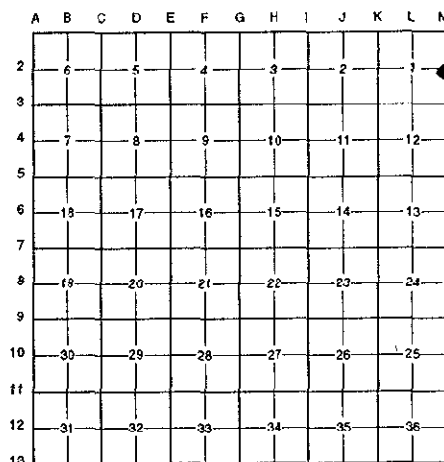
Table with columns: Oakland (County), Located in: Commerce Township, Corner Code #. Rows include Public Land Survey, Property Controlling in Section, and Miscellaneous Property in Sec.

\$ 7.00 MISCELLANEOUS RECORDING
\$ 2.00 REMONUMENTATION
6 NOV 98 10:02 A.M. RECEIPT# 285
PAID Complete RECORD - OAKLAND COUNTY
G. WILLIAM CADELA 1990
CLERK/REGISTER OF DEEDS JS
APPROVED ON: 7/25/98
OAKLAND COUNTY REMONUMENTATION PEER GROUP COMMITTEE
Register of Deeds Stamp & File Number

110-6983 812

- 4. Lot No. , Recorded Plat
5. Private Claims

I, Randy Kolehouse, in a field survey on November 20 19 97, do hereby certify that under requirements of P.A. 74 Michigan P.A. of 1970, the corner points mentioned in lines 1 and 2 above were in conformance with regulations and rules therefore as required in the current manual of survey instructions of the United States Department of the interior, Bureau of Land Management or by a decree of a Court of Law and/or that the corner points mentioned in lines 3, 4 and 5 above were in conformance with the rules of the Michigan Board of Land Surveyors or by a Decree of a Court of Law; established, re-established, monumented, re-monumented, recovered, found as expressed below:



NOTE: Not more than 4 corners, all in the same town and range, may be recorded on this certificate.

A. Description of original monument and accessories and/or subsequent restoration:

Table with columns: M-2, 1816, Holmes, G.L.O. Notes, Set Post. Rows include 1920, W. Fisher, Peninsular Park Sub. L. P. 13, N/A, N/A, O.C. Tax Maps, N/A.

Records indicate this corner is not common with A-2, T2N, R9E.

B. Description of corner evidence found and/or method applied in restoring or reestablishing corner:

M-2 This corner was set by the G.L.O. at 40 chains North of M-3 by traverse around Union Lake. This corner fell approximately 4 chains South of the South shore of Union lake and 40 chains South of M-1. Found no recorded information for M-2, Peninsular Park Subdivision illustrates the township line between T2N R8E and T2N R9E but does not indicate any evidence of M-2 as agreed upon by the Oakland County Peer Review Committee in February, 1998, I set this corner at the midpoint of the line between M-1 and M-3.

700
200

Measure North 2664.37' to M-1 (G.L.O. = 2640.0')
Measure South 2664.37' to M-3 (G.L.O. = 2640.0')

C. Description of monument for corner and accessories established to perpetuate locating the position of the corner:

- M-2 Set a 5/8" x 24" rebar with brass cap stamped "Oakland County Remonumentation P.S. #25854".
Nail & Tag Stamped "Oakland Co. Remonumentation P.S. #25854" in SE Face 36" Oak S 42° W 71.50'
Nail & Tag Stamped "Oakland Co. Remonumentation P.S. #25854" in E Face P. Pole South 38.58'
Nail & Tag Stamped "Oakland Co. Remonumentation P.S. #25854" in NE face P. Pole S 60° E 60.03'
SE Corner Garage N 70° E 64.63'



The selected location is accepted by the Contractor and is generally accepted by professional surveyors as the best available evidence of the position of the original corner.

Signed by Randy J. Kolehouse Date Aug 3, 1998
EARTH TECH
Surveyor's Michigan License No. 25854