

SURVEY & REMONUMENTATION

LIBER 17277621

MAR 04 1998

LAND CORNER RECORDATION CERTIFICATE
Filing Requirement of Act 74, Mich. P.A. 1970

Compliance with ACT 345, P.A. 1990

For corners in SECTION

Table with columns: Oakland (County), Located in: City of Troy, Corner Code #. Rows include Public Land Survey, Property Controlling in Section, Miscellaneous Property in Sec.

APPROVED ON: 5-2-97 MS
OAKLAND COUNTY REMONUMENTATION PEER GROUP COMMITTEE

\$ 9.00 MISCELLANEOUS RECORDING
\$ 2.00 REMONUMENTATION
9 JUN 97 12:14 P.M. RECEIPT# 94A
PAID RECORDED - OAKLAND COUNTY
LYNN D. ALLEN, CLERK/REGISTER OF DEEDS
Register of Deeds Stamp & File Number

- 4. Lot No. , Recorded Plat
5. Private Claims

I, Randy Kolehouse, in a field survey on February 5 19 97, do hereby certify that under requirements of P.A. 74 Michigan P.A. of 1970, the corner points mentioned in lines 1 and 2 above were in conformance with regulations and rules therefore as required in the current manual of survey instructions of the United States Department of the Interior, Bureau of Land Management or by a decree of a Court of Law and/or that the corner points mentioned in lines 3, 4 and 5 above were in conformance with the rules of the Michigan Board of Land Surveyors or by a Decree of a Court of Law; established, re-established, monumented, re-monumented, recovered, found as expressed below:

NOTE: Not more than 4 corners, all in the same town and range, may be recorded on this certificate.

A. Description of original monument and accessories and/or subsequent restoration:

Table with columns: C-2, 1817, Wampler, G.L.O. Notes, Set Post. Lists various survey records and monument types like '1" Iron Pipe', '1" Iron in Mon. Box'.

B. Description of corner evidence found and/or method applied in restoring or reestablishing corner:

C-2 Found a 1" iron in a monument box at the "E 1/4 corner of Section 6" per Charnwood Hills Sub. No. 5 & 6 (1978 and 1984). Also found a 1/2" iron in a monument box at the "W 1/4 corner of Section 5" per L.C.R.C.'s L. 12313 P. 887 and L. 13497 P. 394...

L.C.R.C. L. 12313 P. 887 (1991)
North 44.83' 1" Iron in Mon. Box E 1/4 Cor. Sec. 6
N 11° W 96.13' PK & Washer NE Side P.P.
S 28° W 63.37' PK & Washer E Side P.P.
S 47° E 34.31' Cut Cross NNE Gas Marker Post #80

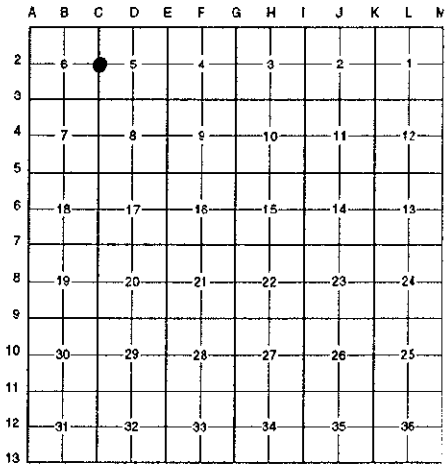
L.C.R.C. L. 13497 P. 394 (1992)
S 45° E 81.0' Nail w/City of Troy Tag in W Face 8" Elm
S 30° W 63.39' PK Nail & Washer RLS #14864 E Face P.P.
North 44.88' 1" Iron in Mon. Box (E 1/4 Corner Sec. 6)

Measure North 3393.52' to C-1 (G.L.O. = 3377.22') (Brown Survey (1967) = 3393.58') (Forest Creek Sub. No. 2 = 3393.55')
Measure South 2480.59' to C-3 (G.L.O. = 2640.0') (Crescent Ridge West Sub. = 2480.6')

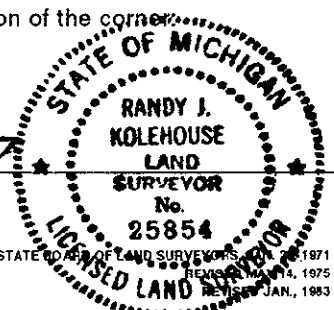
C. Description of monument for corner and accessories established to perpetuate locating the position of the corner:

(Continued on Back)

Signed by Randy J. Kolehouse Date 5/28/97
EARTH TECH
Surveyor's Michigan License No. 25854



Handwritten signature/initials.



LIBER. 17277 PG 622

**SURVEY &  
REMONUMENTATION**

**MAR 04 1998**

**SECTION**

- C. Description of monument for corner and accessories established to perpetuate locating the position of the corner:
- C-2 Replaced 1/2" iron with a 5/8" x 24" rebar with brass cap stamped "Oakland County Remonumentation P.S. #25854 in an existing monument box."
- PK Nail & Tag Stamped "Oakland Co. Remonumentation P.S. #25854" in NE Side P. Pole N 11° W 96.13'  
PK Nail & Tag Stamped "Oakland Co. Remonumentation P.S. #25854" in E Side P. Pole S 30° W 63.39'  
PK Nail & Tag Stamped "Oakland Co. Remonumentation P.S. #25854" in W Side P. Pole N 12° W 96.26'  
PK Nail & Tag Stamped "Oakland Co. Remonumentation P.S. #25854" in SW Side Twin 8" Elm S 45° E 81.0'  
PK Nail & Tag Stamped "Oakland Co. Remonumentation P.S. #25854" in NW Side Box Elder N 61° E 96.77'  
Cut Cross NNE Gas Marker Post #80 S 47° E 34.31'  
1" Iron in Monument Box North 44.88'

The selected location is accepted by the Contractor and is generally accepted by professional surveyors as the best available evidence of the position of the original corner.

