

MAR 04 1998

LAND CORNER RECORDATION CERTIFICATE
Filing Requirement of Act 74, Mich. P.A. 1970

SECTION

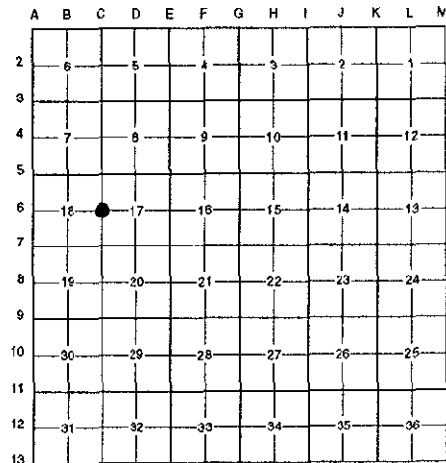
For corners in

Table with columns: Oakland (County), Located in: City of Troy, Corner Code #. Rows include Public Land Survey, Property Controlling in Section, Miscellaneous Property in Sec., Lot No., Private Claims.

Compliance with ACT 345, P.A. 1990
APPROVED ON: 4-9-97
OAKLAND COUNTY REMONUMENTATION PEER GROUP COMMITTEE

\$ 9.00 MISCELLANEOUS RECORDING
\$ 2.00 REMONUMENTATION
RECORDED - OAKLAND COUNTY
LYNN D. ALLEN, CLERK/REGISTER OF DEEDS

I, Randy Kolehouse, in a field survey on March 17, 1997, do hereby certify that under requirements of P.A. 74 Michigan P.A. of 1970, the corner points mentioned in lines 1 and 2 above were in conformance with regulations and rules therefore as required in the current manual of survey instructions of the United States Department of the Interior, Bureau of Land Management or by a decree of a Court of Law and/or that the corner points mentioned in lines 3, 4 and 5 above were in conformance with the rules of the Michigan Board of Land Surveyors or by a Decree of a Court of Law; established, re-established, monumented, re-monumented, recovered, found as expressed below:



NOTE: Not more than 4 corners, all in the same town and range, may be recorded on this certificate.

A. Description of original monument and accessories and/or subsequent restoration:

C-6 1817 Wampler G.L.O. Notes Set Post
1963 N/A O.C.R.C. Section Corner Ties N/A

(Continued on Back)

B. Description of corner evidence found and/or method applied in restoring or reestablishing corner:

C-6 Found a capped iron in a broken concrete monument in the C/L median of Coolidge Highway (bit.) running North and South on line of a tree row running West per L.C.R.C. L. 7722 P. 868 and an unrecorded L.C.R.C. by Wilkerson. Checks closely distances as shown in recorded plats and surveys of record.

L.C.R.C. L. 7722 P. 868 (1979) Unrecorded L.C.R.C. (1993)
SE 73.04' PK D.E. Pole(m. 73.30') S 46° E 73.04' PK in W Face P.P. (m. 73.30')
ESE 68.44' Top Ctr. Bolt Hyd.(m. 68.46') S 58° E 68.44' Top Nut of Hydrant (m. 68.46')

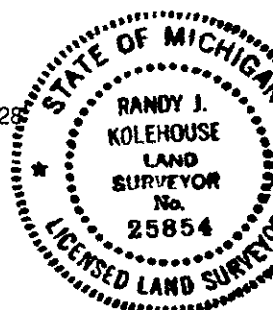
Handwritten note: 9.00 FIVE 2.00 ✓

Measure North 2686.84' to C-5 (G.L.O. = 2640.0') (Oak River East Sub. No. 3 = 2687.18') (MCS Survey (1981) = 2687.12')
Measure South 2549.31' to C-7 (G.L.O. = 2640.0') (Oak River East Sub. No. 1 = 2549.04') (River Place Sub. = 2549.04')
(Greek Meadow = 2548.85')

C. Description of monument for corner and accessories established to perpetuate locating the position of the corner:

C-6 Replaced capped iron and remains of a concrete monument with a 4" x 36" concrete monument with a 1/2" x 36" rebar. Placed a brass cap stamped "Oakland County Remonumentation P.S. #25854" on the 1/2" rebar.

Top Nut of Hyd. S 58° E 68.46'
SW Corner Brick Garage Hse. #1975 N 72° E 127.20'
PK Nail & Tag Stamped "Oakland Co. Remonumentation P.S. #25854" in SSW Side Util. Pole S 44° E 73.97'
PK Nail & Tag Stamped "Oakland Co. Remonumentation P.S. #25854" in NE Side 6" Crabapple N 34° W 125.28'
PK Nail & Tag Stamped "Oakland Co. Remonumentation P.S. #25854" in N Side 4" Spruce S 56° W 97.90'



The selected location is accepted by the Contractor and is generally accepted by professional surveyors as the best available evidence of the position of the original corner.

Signed by Randy J. Kolehouse Date 5/28/97
EARTH TECH

Surveyor's Michigan License No. 25854

SURVEY &
REMONUMENTATION

LIBER 17277PG630

MAR 04 1998

SECTION

A. Description of original monument and accessories and/or subsequent restoration:

| | | | | |
|-----|------|-----------|---|------------|
| C-6 | 1974 | Stonerock | L.C.R.C. L. 6301 P. 609 | 1/2" Iron |
| | 1978 | Patterson | L.C.R.C. L. 7326 P. 395 | 1/2" Rerod |
| | 1979 | Fenn | L.C.R.C. L. 7722 P. 868 | 3/4" Pipe |
| | 1980 | Menzel | Oak River East Sub. No. 1 L. 171 P. 5 | N/A |
| | 1986 | Raymond | Greek Meadows L. 190 P. 1 | N/A |
| | 1989 | Beattie | River Place Sub. L. 206 P. 10 | N/A |
| | ?? | Beattie | Oak River East Sub. No. 3 L. 208 P. 28-29 | N/A |
| | 1993 | Wilkerson | Unrecorded L.C.R.C. | 1/2" Iron |
| | N/A | N/A | O.C. Section Information | N/A |
| | N/A | N/A | O.C. Tax Maps | N/A |

