

SURVEY & REMONUMENTATION

LIBER 17277PG692

MAR 04 1998

LAND CORNER RECORDATION CERTIFICATE
Filing Requirement of Act 74, Mich. P.A. 1970

Compliance with ACT 345, P.A. 1990

APPROVED ON: 4-9-97 JS
OAKLAND COUNTY REMONUMENTATION PEER GROUP COMMITTEE

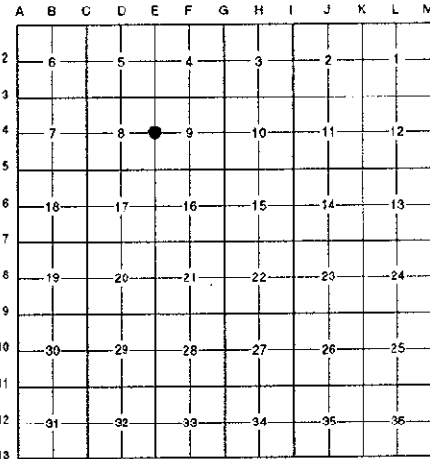
For corners in	SECTION	Located in:	City of Troy	Corner Code #
Oakland (County)				
1. Public Land Survey		T 2N R 11E		E-4
		T R		
		T R		
		T R		
2. Property Controlling in Section	S T R			
	S T R			
3. Miscellaneous Property in Sec.	S T R			
	S T R			

\$ 7.00 MISCELLANEOUS RECORDING
\$ 2.00 REMONUMENTATION
9 JUN 97 12:20 P.M. RECEIPT# 94A
PAID RECORDED - OAKLAND COUNTY
LYNN D. ALLEN, CLERK/REGISTER OF DEEDS

Register of Deeds Stamp & File Number

- 4. Lot No. _____, Recorded Plat _____
- 5. Private Claims _____

I, Randy Kolehouse, in a field survey on March 14 19 97, do hereby certify that under requirements of P.A. 74 Michigan P.A. of 1970, the corner points mentioned in lines 1 and 2 above were in conformance with regulations and rules therefore as required in the current manual of survey instructions of the United States Department of the Interior, Bureau of Land Management or by a decree of a Court of Law and/or that the corner points mentioned in lines 3, 4 and 5 above were in conformance with the rules of the Michigan Board of Land Surveyors or by a Decree of a Court of Law; established, re-established, monumented, re-monumented, recovered, found as expressed below:



NOTE: Not more than 4 corners, all in the same town and range, may be recorded on this certificate.

A. Description of original monument and accessories and/or subsequent restoration:

E-4	Year	Material	Notes	Set Post
	1817	Wampler	G.L.O. Notes	Set Post
	1974	Stonerock	L.C.R.C. L. 6301 P. 605	1/2" Pipe
	1976	Stonerock	L.C.R.C. L. 6748 P. 608	1/2" Iron
	1980	Walker	Survey	N/A
	1980	Walker	Survey	N/A
	1984	Giffels	Composite Survey Drawing	N/A
	1987	N/A	Survey Tower Drive	N/A
	1987	Kohn	L.C.R.C. L. 9870 P. 24	5/8" Iron
	1987	O'Rourke	L.C.R.C. L. 10228 P. 456	Set 1/2" Iron Bar
	N/A	N/A	O.C. Tax Maps	N/A

B. Description of corner evidence found and/or method applied in restoring or reestablishing corner:

E-4 Found a 1/2" rebar in a broken concrete monument 145.3' South of the C/L of Corporate Road (conc.) running East and West and 17.2' East of the C/L median of Crooks Road (conc.) running North and South as set by O'Rourke in 1987 in a concrete monument per L.C.R.C. L. 10228 P. 456. Based on the 1984 survey drawing by Giffels, this point is 1.12' North of the location of E-4 in 1984. Recommend moving corner 1.12' South to check Giffels 1984 survey. Checks closely distances as shown in surveys of record.

- L.C.R.C. L. 10228 P. 456 (1987)
- N 40° E 92.51' "X" on Top of SW Bolt on Steel Pole Base (m. 92.53')
- N 80° E 61.60' Top Nut on Hydrant
- N 10° W 84.95' "X" on Top of SE Bolt on Steel Pole Base
- Measure North 2886.39' to E-3 (G.L.O. = 2640.0') (Giffels = 2886.28')
- Measure South 2536.21' to E-5 (G.L.O. = 2640.0') (Walker = 2536.84') (Giffels = 2536.17')

7.20 E-4
2.00 ✓

C. Description of monument for corner and accessories established to perpetuate locating the position of the corner:

E-4 Set a new 4" x 36" concrete monument with a 1/2" x 36" rebar. Also set a brass cap stamped "Oakland County Remonumentation P.S. #25854" over 1/2" rebar.

- Top C/L Hyd. N 86° E 61.60'
- "X" Cut in Top of SW Bolt to Steel Pole Base N 52° E 92.53'
- "X" Cut in Top of SE Bolt to Steel Pole Base N 05° W 84.95'
- Top C/L E Bolt Steel Pole Base N 45° W 133.03'
- PK Nail & Tag Stamped "Oakland Co. Remonumentation P.S. #25854" in N Side 12" Maple S 88° W 139.16'
- W Side Northbound Crooks Rd. Curb, Back of Curb East 2.85'

The selected location is accepted by the Contractor and is generally accepted by professional surveyors as the best available evidence of the position of the original corner.



Signed by Randy J. Kolehouse Date 5/28/97
EARTH TECH

Surveyor's Michigan License No. 25854