

SURVEY & REMONUMENTATION

AP 20 1089309

MAR 04 1998

LIBER 17156 PG 286

SECTION

LAND CORNER RECORDATION CERTIFICATE
Filing Requirement of Act 74, Mich. P.A. 1970

For corners in

Oakland

(County)

Located In: Troy Twp. Corner Code #

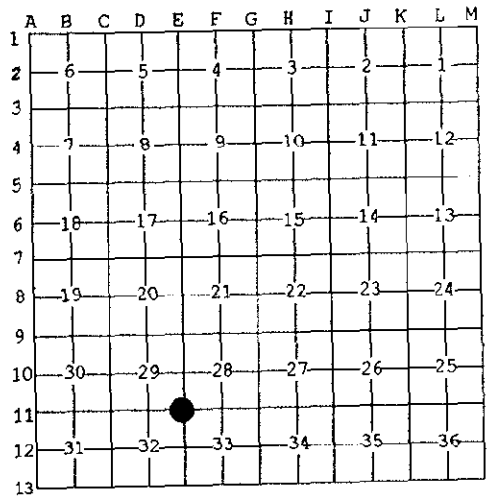
1. Public Land Survey	T	<u>2N</u>	R	<u>11E</u>	<u>E-11</u>
	T		R		
	T		R		
	T		R		
2. Property Controlling in Section	S		T	R	
	S		T	R	
3. Miscellaneous Property in Sec.	S		T	R	
	S		T	R	

\$ 9.00 MISCELLANEOUS RECORDING
\$ 2.00 REMONUMENTATION
24 APR 97 8:49 A.M. RECEIPT \$54
PAID RECORDED - OAKLAND COUNTY
LYNN D. ALLEN, CLERK/REGISTER OF DEEDS
ACT 345 P.A. 1970
APPROVED ON: 3-25-97 JS
OAKLAND COUNTY REGISTER OF DEEDS
REGISTER OF DEEDS STAMP & FILE NUMBER

4. Lot No. _____, Recorded Plat _____
5. Private Claims _____

I, Huston K. Kennedy, in a field survey on 3/3, 19 97 do hereby state that under requirements of P.A. 74, Michigan P.A. of 1970, the corner points mentioned in lines 1 and 2 above were in conformance with regulations and rules therefore as required in the current manual of survey instructions of the United States Department of the Interior, Bureau of Land Management or by a decree of a Court of Law and/or that the corner points mentioned in lines 3, 4 and 5 above were in conformance with the rules of the Michigan Board of Land Surveyors or by a Decree of a Court of Law; established, re-established, monumented, recovered, found as expressed below:

NOTE: Not more than 2 corners, all in the same town and range, may be recorded on this certificate.



- A. Description of original monument and accessories and/or subsequent restoration:
1817-GLO Wampler, D.S.; Set Post 1" Ironwood S83°W 15 Links; 1" Ironwood N51°E 11 Links
1.) 1994-Kohn, PS #26459; LCRC L.14394, Pg.599 - Fnd P.K. Nail
2.) 1977-Fraus, PS #17089; Unrecorded Survey - Object found not stated, no witnesses
3.) 1977-Fraus, PS #17089; Unrecorded Survey - Object found not stated, no witnesses
4.) 1977-Fraus, PS #17089; Unrecorded Survey - Object found not stated, no witnesses
5.) 1984-Stecker, PS #30103; Unrecorded Survey - Object found not stated, no witnesses
6.) 1992-Herd, PS Unrecorded Survey - Object found not stated, no witnesses
7.) 1992-Hughes, PS #19834; Unrecorded Survey - Fnd P.K. Nail
8.) 1942-"MAPLE GARDEN ESTATES SUBDIVISION", L.43, Pg.53 (over)

B. Description of corner evidence found and/or method applied in restoring or reestablishing corner:
1997 Kennedy Surveying, Inc. - Kennedy, PS #17623 - Fnd P.K. Nail with Washer #21562 in the intersection of Crooks Road extending to the North & South, which has a concrete surface and Maple Road extending to the East & West, which has a concrete surface. Found second P.K. Nail S66°E 0.51 feet, also found third P.K. Nail S76°E 0.73 feet.

Above mentioned plat #8 was used to recover and verify the location of the found P.K. Nail with Washer #21562.

I accepted the found P.K. Nail with Washer #21562 as the best evidence of the original corner position.

Field measurements between see back side of LCRC

C. Description of monument for corner and accessories established to perpetuate locating the position of the corner:

- E-11 I replaced the found P.K. Nail with Washer #21562 with a 5/8" x 24" Iron Rod w/2" diameter brass cap stamped Oakland County Remonumentation, PS #17623 in a new Monument Box S66°E 0.51 Ft. Fnd P.K. Nail
S44°W 76.08' Set PK & Remon Washer NW face Light Pole S76°E 0.73 Ft. Fnd P.K. Nail
N45°W 68.60' Set PK & Remon Washer NE face Light Pole
N46°E 79.31' Set PK & Remon Washer NW face Power Pole
S43°E 85.79' Center of NW bolt in concrete base for traffic pole

The selected location is accepted by me and is generally accepted by Professional Surveyors as the best available evidence of the position of the original corner.

Signed by [Signature]
Surveyor's Michigan License No. 17623

Date 3-26-97



MAR 04 1998

SECTION

LIBER 17156 PG 287

- 9.) Guaranty Survey Company; Unrecorded Survey - Object found not stated, no witnesses
10.) 1996-Donnelly, PS #21563; Unrecorded Survey - Fnd a P.K. Nail

FIELD MEASUREMENTS BETWEEN

E-11 to D-11

GLO = 40.11 chains or 2647.26 Ft.
Sidwell E 1/2 Sec 32 (20-32) = 2665.52 Ft.
"MAPLELAWN INDUSTRIAL PARK NO. 2" + "SUPERVISOR'S PLAT NO. 23" = 2670.00 Ft.
Survey by Darrell D. Hughes, PS #19834 (6/24/92) = 2670.30 Ft.
GPS-MEA = 2669.61 Ft.

E-11 to E-10

GLO = 40 chains or 2640.00 Ft.
"MAPLE GARDENS ESTATES SUBDIVISION" + Parcels = 2421.00 Ft.
"SUPERVISOR'S PLAT NO. 23" + Parcels + "MAPLELAWN INDUSTRIAL PARK" = 2374.95 Ft.
GPS-MEA = 2420.75 Ft.

E-11 to E-12

GLO = 40 chains or 2640.00 Ft.
"MAPLE HEIGHTS NO. 3" + "CLAWSON INDUSTRIAL PARK" + Parcels = 2863.40 Ft.
"OAKWOOD INDUSTRIAL PARK" + Parcels = 2803.79 ft
Survey by Darrell D. Hughes, PS #19834 (6/24/92) = 2803.86 Ft.
GPS-MEA = 2803.73 Ft.

E-11 to F-11

GLO = 40.95 chains or 2702.70 Ft.
"MAPLE GARDENS ESTATES SUBDIVISION" + Parcels = 2624.84 Ft. Ft.
GPS-MEA = 2624.42 Ft.