

SURVEY & REMONUMENTATION

LAND CORNER RECORDATION CERTIFICATE Filing Requirement of Act 74, Mich. P.A. 1970

MAR 04 1998

Compliance with ACT 345, P.A. 1990

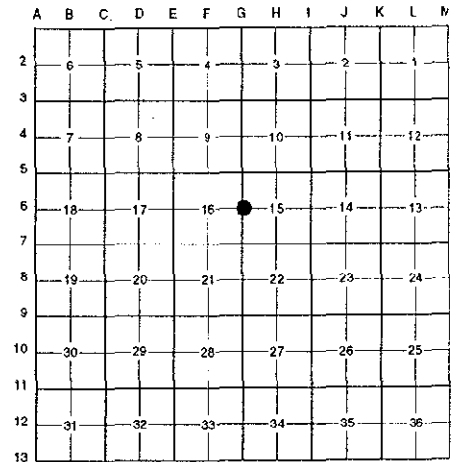
For corners in

Form with fields for County (Oakland), SECTION, Located in: City of Troy, Corner Code # (G-6), and numbered items 1-5 for survey details.

APPROVED ON: 3-26-97 BY OAKLAND COUNTY REMONUMENTATION PEER GROUP COMMITTEE

\$ 7.00 MISCELLANEOUS RECORDING \$ 2.00 REMONUMENTATION 9 JUN 97 12:21 P.M. RECEIPT# 94A PAID RECORDED - OAKLAND COUNTY LYNN D. ALLEN, CLERK/REGISTER OF DEEDS Register of Deeds Stamp & File Number

I, Randy Kolehouse, in a field survey on March 10 19 97, do hereby certify that under requirements of P.A. 74 Michigan P.A. of 1970, the corner points mentioned in lines 1 and 2 above were in conformance with regulations and rules therefore as required in the current manual of survey instructions of the United States Department of the Interior, Bureau of Land Management or by a decree of a Court of Law and/or that the corner points mentioned in lines 3, 4 and 5 above were in conformance with the rules of the Michigan Board of Land Surveyors or by a Decree of a Court of Law; established, re-established, monumented, re-monumented, recovered, found as expressed below:



NOTE: Not more than 4 corners, all in the same town and range, may be recorded on this certificate.

A. Description of original monument and accessories and/or subsequent restoration:

Table with 4 columns: Corner Code, Name, Description, and Monument Type. Includes entries for Wampler, Patterson, Hart, and O.C. Tax Maps.

B. Description of corner evidence found and/or method applied in restoring or reestablishing corner:

G-6 Found a PK nail 5' East of the C/L of Livernois (bit.) running North and South on line of a tree row running East and West which checks Glenshire Sub. L. 190 P. 35 per L.C.R.C.'s L. 9626 P. 265 and L. 15499 P. 267. Checks closely distances as shown in the Oakland County tax records.

Table with 2 columns: L.C.R.C. L. 9626 P. 265 (1986) and L.C.R.C. L. 15499 P. 267. Lists bearings and distances for O.C. Nail and Cap in U.P. and OCRC Tag in U.P.

Measure North 2741.69' to G-5 (G.L.O. = 2640.0') (Tax Maps = 2740.3' ±) Measure South 2464.52' to G-7 (G.L.O. = 2640.0') (Tax Maps = 2463.0' ±)

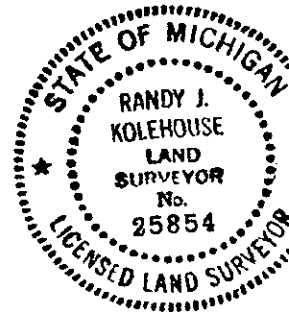
Handwritten note: 700 FILE 200 ✓

C. Description of monument for corner and accessories established to perpetuate locating the position of the corner:

G-6 Replaced PK nail with a 5/8" x 24" rebar with brass cap stamped "Oakland County Remonumentation P.S. #25854." Also set a new monument box.

- List of monuments: PK Nail & Tag Stamped "Oakland Co. Remonumentation P.S. #25854" in SW Side Util. Pole S 40° E 49.81', PK Nail & Tag Stamped "Oakland Co. Remonumentation P.S. #25854" in NW Side Util. Pole S 25° W 56.52', PK Nail & Tag Stamped "Oakland Co. Remonumentation P.S. #25854" in S Side 14" Walnut S 80° W 53.66', PK Nail & Tag Stamped "Oakland Co. Remonumentation P.S. #25854" in NW Side 28" Maple N 45° E 106.13'

The selected location is accepted by the Contractor and is generally accepted by professional surveyors as the best available evidence of the position of the original corner.



Signed by Randy J. Kolehouse Date 5/29/97 Surveyor's Michigan License No. 25854