

MAR 0 4 1998

LIBER 17277 PG 651

SECTION

LAND CORNER RECORDATION CERTIFICATE  
Filing Requirement of Act 74, Mich. P.A. 1970

Compliance with  
ACT 345, P.A. 1990

For corners in

Oakland (County)	Located in:	City of Troy	Corner Code #
1. Public Land Survey	T <u>2N</u> R <u>11E</u>		<u>1-2</u>
	T _____ R _____		_____
	T _____ R _____		_____
	T _____ R _____		_____
2. Property Controlling in Section	S _____ T _____ R _____		_____
	S _____ T _____ R _____		_____
3. Miscellaneous Property in Sec.	S _____ T _____ R _____		_____
	S _____ T _____ R _____		_____

APPROVED ON: 3-26-97 RS  
OAKLAND COUNTY REMONUMENTATION  
PEER GROUP COMMITTEE

\$ 9.00 MISCELLANEOUS RECORDING  
\$ 2.00 REMONUMENTATION  
9 JUN 97 12:16 P.M. RECEIPT# 94A  
PAID RECORDED - OAKLAND COUNTY  
LYNN D. ALLEN, CLERK/REGISTER OF DEEDS  
Register of Deeds Stamp & File Number

- 4. Lot No. \_\_\_\_\_, Recorded Plat \_\_\_\_\_
- 5. Private Claims \_\_\_\_\_

I, Randy Kolehouse, in a field survey on March 13 19 97, do hereby certify that under requirements of P.A. 74 Michigan P.A. of 1970, the corner points mentioned in lines 1 and 2 above were in conformance with regulations and rules therefore as required in the current manual of survey instructions of the United States Department of the interior, Bureau of Land Management or by a decree of a Court of Law and/or that the corner points mentioned in lines 3, 4 and 5 above were in conformance with the rules of the Michigan Board of Land Surveyors or by a Decree of a Court of Law; established, re-established, monumented, re-monumented, recovered, found as expressed below:

NOTE: Not more than 4 corners, all in the same town and range, may be recorded on this certificate.

A. Description of original monument and accessories and/or subsequent restoration:

I-2 1817 Wampler G.L.O. Notes Set Post  
1928 Southern Survey N/A  
(Continued on Back)

B. Description of corner evidence found and/or method applied in restoring or reestablishing corner:

I-2 Found a PK nail in the C/L of Rochester Road (conc.) running North and South and East of a fence row running West as set by Murphy in 1972 per L.C.R.C.'s L. 10070 P. 069, L. 10844 P. 852, L. 12283 P. 215 and an unrecorded L.C.R.C. by Wilkerson. Checks closely distances as shown in surveys of record.

L.C.R.C. L. 10070 P. 069 (1987)	Unrecorded L.C.R.C. (1993)
SE 66.70' PK Nail w/Washer in N Face 20" Tree	N 88° W 43.30' PK/Tag E Face U.P.
NE 60.50' Center Bell Symbol in MBT M.H.	S 40° E 66.67 PK/Tag N Face 24" Elm
West 43.24' PK Nail w/Washer in N Face U.P.	N 37° E 60.27' MBT M.H. (m. 61.27')

L.C.R.C. L. 12283 P. 215 (1990)  
Mag. Az 37° 60.27' to Chiseled "X" on SE Rim MBT M.H.  
Mag. Az 136° 66.70' to Nail & Tag in NE Face 24" Elm  
Mag. Az 278° 43.30' to Nail & Tag in N Face U.P.  
Mag. Az 330° 92.26' to PK Nail w/RJD Tag in NE Face U.P.

Measure North 3624.60' to Town Line (G.L.O. = 3432.0') (Southern (1928) = 3617.33')  
Measure South 2237.71' to I-3 (G.L.O. = 2640.0') (Southern (1928) = 2238.11)

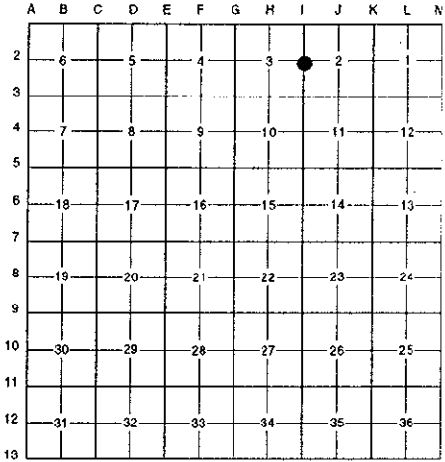
C. Description of monument for corner and accessories established to perpetuate locating the position of the corner:

I-2 Replaced the PK nail with a 5/8" x 24" rebar with brass cap stamped "Oakland County Remonumentation P.S. #25854." Also set a new monument box.

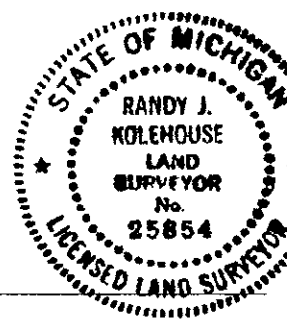
Chiseled "X" on SE Rim of M.B.T. Manhole N 40° E 61.27'  
PK Nail & Tag Stamped "Oakland Co. Remonumentation P.S. #25854" in NE Face Util. Pole N 50° W 92.26'  
PK Nail & Tag Stamped "Oakland Co. Remonumentation P.S. #25854" in N Face Util. Pole N 80° W 43.35'  
PK Nail & Tag Stamped "Oakland Co. Remonumentation P.S. #25854" in NE Face 24" Elm S 45° E 66.72'

The selected location is accepted by the Contractor and is generally accepted by professional surveyors as the best available evidence of the position of the original corner.

Signed by Randy J Kolehouse Date 5/28/97  
EARTH TECH  
Surveyor's Michigan License No. 25854



9.00 FILE  
2.00 ✓



SURVEY &  
REMONUMENTATION

LIBER 17277PG652

MAR 04 1998

SECTION

A. Description of original monument and accessories and/or subsequent restoration:

I-2	1928	Southern	Survey	N/A
	1965/1966	Roser	O.C.R.C. Witnesses #22	R.R. Spike
	1972	Murphy	L.C.R.C. L. 5926 P. 519	PK Nail
	1978	Walker	Survey	N/A
	1987	Fenn	L.C.R.C. L. 10070 P. 089	PK Nail
	1988	Ward	L.C.R.C. L. 10844 P. 852	PK Nail
	1990	Donnelly	L.C.R.C. L. 12283 P. 215	PK Nail
	N/A	N/A	Witnesses to Corners	PK Nail
	1993	Wilkerson	Unrecorded L.C.R.C.	PK Nail
	N/A	N/A	O.C. Section Information	N/A
	N/A	N/A	O.C. Tax Maps	N/A