

MAR 04 1998

INDEX 172770657

SECTION

LAND CORNER RECORDATION CERTIFICATE
Filing Requirement of Act 74, Mich. P.A. 1970

Compliance with ACT 345, P.A. 1990

APPROVED ON: 3-26-97 RS
OAKLAND COUNTY REMONUMENTATION PEER GROUP COMMITTEE

For corners in

Oakland (County)	Located in:	City of Troy	Corner Code #
1. Public Land Survey	T 2N R 11E		I-6
	T R		
	T R		
	T R		
2. Property Controlling in Section	S T R		
	S T R		
3. Miscellaneous Property in Sec.	S T R		
	S T R		

\$ 9.00 MISCELLANEOUS RECORDING
\$ 2.00 REMONUMENTATION
9 JUN 97 12:16 P.M. RECEIPT# 94A
PAID RECORDED - OAKLAND COUNTY
LYNN D. ALLEN, CLERK/REGISTER OF DEEDS

Register of Deeds Stamp & File Number

- 4. Lot No. _____, Recorded Plat _____
- 5. Private Claims _____

I, Randy Kolehouse, in a field survey on March 4 19 97, do hereby certify that under requirements of P.A. 74 Michigan P.A. of 1970, the corner points mentioned in lines 1 and 2 above were in conformance with regulations and rules therefore as required in the current manual of survey instructions of the United States Department of the interior, Bureau of Land Management or by a decree of a Court of Law and/or that the corner points mentioned in lines 3, 4 and 5 above were in conformance with the rules of the Michigan Board of Land Surveyors or by a Decree of a Court of Law; established, re-established, monumented, re-monumented, recovered, found as expressed below:

NOTE: Not more than 4 corners, all in the same town and range, may be recorded on this certificate.

A. Description of original monument and accessories and/or subsequent restoration:

	1816	Wampler	G.L.O. Notes	Set Post
I-6	1940	Lister	Square Acres Sub. L. 14 P. 49	N/A
	1942	Lister	Square Acres Sub. No. 1 L. 44 P. 48	N/A

(Continued on Back)

B. Description of corner evidence found and/or method applied in restoring or reestablishing corner:

I-6 Found a PK nail 2' West of the C/L of Rochester Road (conc.) running North and South on line of a tree row running West and on line of a fence running East as set by Grant Ward per L.C.R.C. L. 10857 P. 714-715 and an unrecorded L.C.R.C. by Wilkerson. Also found an "X" cut in concrete 0.86' East of the PK. Established the West right-of-way line of Rochester Road using a found concrete monument at the NW corner of Rochester Road and Longfellow Drive per Pinemeadow Sub. and a found concrete monument at the Southeast corner of Lot 125 Cypress Gardens Sub. Extended this line North to E-W 1/4 line and measured East 74.0' to the found PK. Measured 74.86' East to the "X" cut (Record = 75.0'). Measured East from "X" cut to the SW corner of Lot 191 Shallowbrook Sub (Record = 325.0', Meas. = 324.9'). It appears the PK recorded in L. 10857 P. 714 is approximately 1.0' West of I-6. Decided to hold the found "X" cut which better checks the road right-of-way of plats. Checks closely distances as shown in recorded plats and the Oakland County tax records.

L.C.R.C. L. 10857 P. 714-715 (1989) Unrecorded L.C.R.C. (1993)
N 20° W 213.81' 1/2" Iron Pipe (m. 213.83') N 44° W 63.79' PK/Tag S Face U.P.

Measure North 2778.02' to H-6 (G.L.O. = 2640.0') (Tax Maps = 2777.4')
Measure South 2435.77' to J-6 (G.L.O. = 2640.0') (Tax Maps = 2437' ±) (Sq. Acres Subs. = 2436.36')

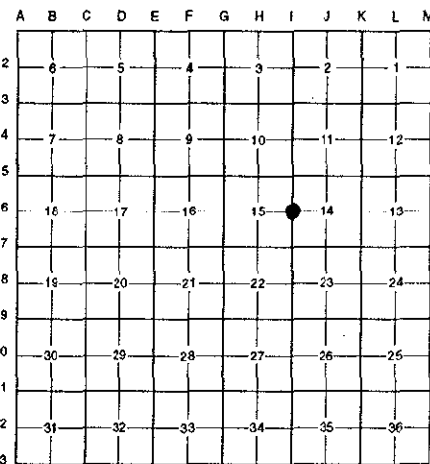
C. Description of monument for corner and accessories established to perpetuate locating the position of the corner:

I-6 Replaced PK nail with a 5/8" x 24" rebar with brass cap stamped "Oakland County Remonumentation P.S. #25854." Also set a new monument box.

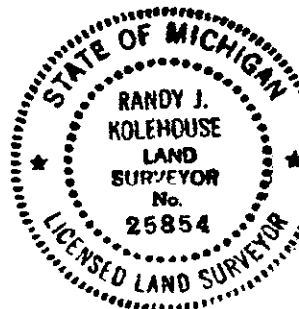
- PK Nail & Tag Stamped "Oakland Co. Remonumentation P.S. #25854" in SW Side Util. Pole N 48° W 64.49'
- PK Nail & Tag Stamped "Oakland Co. Remonumentation P.S. #25854" in SE Side Util. Pole S 28° W 117.24'
- PK Nail & Tag Stamped "Oakland Co. Remonumentation P.S. #25854" in S Side Util. Pole S 85° E 80.82'
- Top C/L Nut Hyd. S 30° E 113.60'
- PK Nail West 0.86'

The selected location is accepted by the Contractor and is generally accepted by professional surveyors as the best available evidence of the position of the original corner.

Signed by Randy Kolehouse Date 5/28/97
EARTH TECH
Surveyor's Michigan License No. 25854



900 FILE
200 ✓



SURVEY &
REMONUMENTATION

MAR 04 1998

LIBER 17277PC658

SECTION

A. Description of original monument and accessories and/or subsequent restoration:

I-6	1942	Adams	Survey	N/A
	1989	Ward	L.C.R.C. L. 10857 P. 714-715	Set PK
	1993	Wilkerson	Unrecorded L.C.R.C.	PK Nail
	N/A	N/A	O.C. Section Information	N/A
	N/A	N/A	O.C. Tax Maps	N/A

