

SURVEY & REMONUMENTATION

MAR 04 1998

LIBER **17277PG703**

LAND CORNER RECORDATION CERTIFICATE
Filing Requirement of Act 74, Mich. P.A. 1970

Compliance with ACT 345, P.A. 1990

For corners in **SECTION**

<u>Oakland</u> (County)	Located in:	City of Troy	Corner Code #
1. Public Land Survey	T <u>2N</u> R <u>11E</u>		<u>K-4</u>
	T _____ R _____		_____
	T _____ R _____		_____
	T _____ R _____		_____
2. Property Controlling in Section	S _____ T _____ R _____		_____
	S _____ T _____ R _____		_____
3. Miscellaneous Property in Sec.	S _____ T _____ R _____		_____
	S _____ T _____ R _____		_____

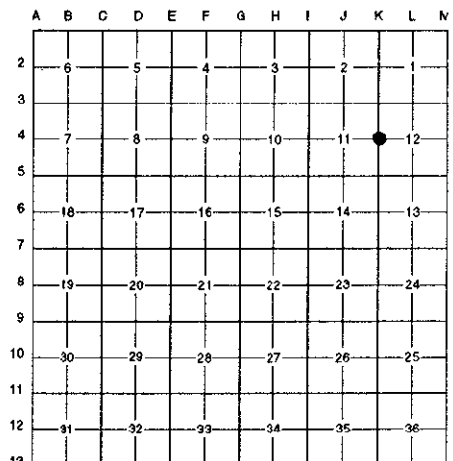
APPROVED ON: 3-26-97 FS
OAKLAND COUNTY REMONUMENTATION
PEER GROUP COMMITTEE

\$ 7.00 MISCELLANEOUS RECORDING
\$ 2.00 REMONUMENTATION
9 JUN 97 12:22 P.M. RECEIPT# 94A
PAID RECORDED - OAKLAND COUNTY
LYNN D. ALLEN, CLERK/REGISTER OF DEEDS
Register of Deeds Stamp & File Number

- 4. Lot No. _____, Recorded Plat _____
- 5. Private Claims _____

I, Randy Kolehouse, in a field survey on February 6 19 97, do hereby certify that under requirements of P.A. 74 Michigan P.A. of 1970, the corner points mentioned in lines 1 and 2 above were in conformance with regulations and rules therefore as required in the current manual of survey instructions of the United States Department of the interior, Bureau of Land Management or by a decree of a Court of Law and/or that the corner points mentioned in lines 3, 4 and 5 above were in conformance with the rules of the Michigan Board of Land Surveyors or by a Decree of a Court of Law; established, re-established, monumented, re-monumented, recovered, found as expressed below:

NOTE: Not more than 4 corners, all in the same town and range, may be recorded on this certificate.



A. Description of original monument and accessories and/or subsequent restoration:

K-4	1817	Wampler	G.L.O. Notes	Set Post
	1930	Southern	Survey	N/A
	1976	Zeimet	Laurelwood Sub. L. 148 P. 18	N/A
	1977	Ernig	L.C.R.C. L. 6988 P. 276	PK Nail
	1993	Defenderfer	Witnesses (OHM)	PK Nail
	1993	Wilkerson	Unrecorded L.C.R.C.	PK Nail
	N/A	N/A	O.C. Section Information	N/A
	N/A	N/A	O.C. Tax Maps	N/A

B. Description of corner evidence found and/or method applied in restoring or reestablishing corner:

K-4 Found a PK nail 2' ± West of the C/L of John R. Road (bit.) running North and South, 15' ± South of the C/L of Hopedale Road running West, on line of a tree row running East per L.C.R.C. L. 6988 P. 276 and an unrecorded L.C.R.C. by Wilkerson. Checks closely distances as shown in the Oakland County tax records and surveys of record.

L.C.R.C. L. 6988 P. 276 (1977)	Unrecorded L.C.R.C. (1993)
Due E 30.86' PK Nail in NE Face of D.E. Pole	S 72° W 53.68' Top Nut on Hyd.
S 69° W 53.87' Top Center of Fire Hydrant	N 51° W 72.46' PK/Washer N Face U.P.
N 49° W 72.59' PK Nail on NE Face of D.E. Pole	S 84° E 30.76' PK/Washer N Face U.P.
	S 79° W 60.18' Back of Walk Intersection

*700 FILE
2nd ✓*

Measure North 2981.43' to K-3 (G.L.O. = 2640.0') (Southern (1930) = 2982.3')
Measure South 2443.78' to K-5 (G.L.O. = 2640.0') (O.C. Section Info. = 2436.7') (Tax Map = 2646 ±) (Laurelwood Sub. = 2446.16')

C. Description of monument for corner and accessories established to perpetuate locating the position of the corner:

K-4 Replaced PK nail with a 5/8" x 24" rebar with brass cap stamped "Oakland County Remonumentation P.S. #25854." Also set a new monument box.

- PK Nail & Tag Stamped "Oakland Co. Remonumentation P.S. #25854" in N. Side P. Pole N 51° W 72.46'
- PK Nail & Tag Stamped "Oakland Co. Remonumentation P.S. #25854" in N. Side P. Pole S 84° E 30.76'
- Top Nut C/L of Hyd. S 72° W 53.68'
- Intersection at Back of Walk S 79° W 60.18'

The selected location is accepted by the Contractor and is generally accepted by professional surveyors as the best available evidence of the position of the original corner.

Signed by Randy J. Kolehouse Date 5/28/97
EARTH TECH
Surveyor's Michigan License No. 25854

