

SURVEY & REMONUMENTATION

LIBER **17277** PG **704**

MAR 04 1998

LAND CORNER RECORDATION CERTIFICATE
Filing Requirement of Act 74, Mich. P.A. 1970

Compliance with
ACT 345, P.A. 1990

For corners in

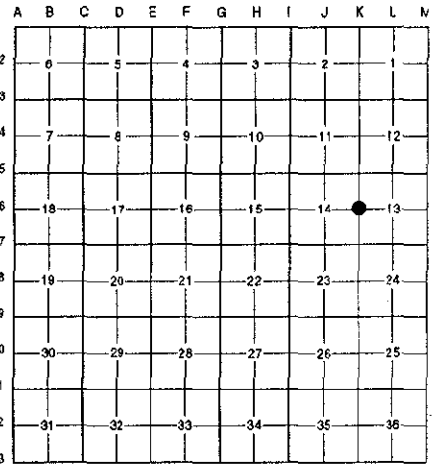
SECTION

Oakland (County)	Located in:	City of Troy	Corner Code #
1. Public Land Survey	T <u>2N</u> R <u>11E</u>		<u>K-6</u>
	T _____ R _____		_____
	T _____ R _____		_____
	T _____ R _____		_____
2. Property Controlling in Section	S _____ T _____ R _____		_____
	S _____ T _____ R _____		_____
3. Miscellaneous Property in Sec.	S _____ T _____ R _____		_____
	S _____ T _____ R _____		_____

APPROVED ON: 3-26-97 MS
OAKLAND COUNTY REMONUMENTATION
PEER GROUP COMMITTEE

\$ 7.00 MISCELLANEOUS RECORDING
\$ 2.00 REMONUMENTATION
9 JUN 97 12:22 P.M. RECEIPT# 94A
PAID RECORDED - OAKLAND COUNTY
LYNN D. ALLEN, CLERK/REGISTER OF DEEDS
Register of Deeds Stamp & File Number

- 4. Lot No. _____, Recorded Plat _____
- 5. Private Claims _____



I, Randy Kolehouse, in a field survey on February 6 19 97, do hereby certify that under requirements of P.A. 74 Michigan P.A. of 1970, the corner points mentioned in lines 1 and 2 above were in conformance with regulations and rules therefore as required in the current manual of survey instructions of the United States Department of the interior, Bureau of Land Management or by a decree of a Court of Law and/or that the corner points mentioned in lines 3, 4 and 5 above were in conformance with the rules of the Michigan Board of Land Surveyors or by a Decree of a Court of Law; established, re-established, monumented, re-monumented, recovered, found as expressed below:

NOTE: Not more than 4 corners, all in the same town and range, may be recorded on this certificate.

A. Description of original monument and accessories and/or subsequent restoration:

K-6	1817	Wampler	G.L.O. Notes	Set Post
	1938	Wrenn	Survey	N/A
	1943	McAlpine	Survey	N/A
	1965	N/A	Mt. Vernon Est. Sub. L. 116 P. 13	N/A
	1972	Pawlaczyk	L.C.R.C. L. 6247 P. 725-726	PK Nail
	1988	Donnelly	L.C.R.C. L. 11062 P. 210	PK Nail
	1989	Patterson	Survey	N/A
	N/A	N/A	O.C. Tax Maps	N/A

B. Description of corner evidence found and/or method applied in restoring or reestablishing corner:

K-6 Found a 1/2" rebar in a monument box in the center turn lane of John R. Road (conc.) running North and South, on line of power lines running East, and 33' ± North of a fence line running West per L.C.R.C.'s L. 6247 P. 725 and L. 11062 P. 210. Checks closely distances as shown in recorded plats, Oakland County tax records and surveys of record.

L.C.R.C. L. 6247 P. 725-726 (1972)
52.29' Southwest Tag #2150 in U.P.

L.C.R.C. L. 11062 P. 210 (1988)
S 21° W 98.60' C/L Top of Hyd. (m. 100.70')
S 88° E 52.77' Nail w/GW Tag in N Face U.P. (m. 52.03')

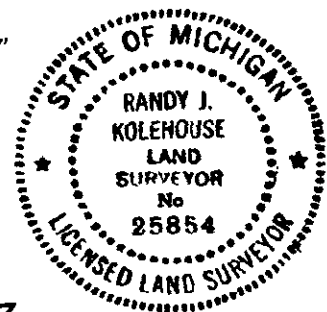
Measure North 2827.22' to K-5 (G.L.O. = 2640.0') (Wrenn (1937) = 2828.0')
Measure South 2458.21' to K-7 (G.L.O. = 2640.0') (O.C. Tax Maps = 2460.0' ±) (Mt. Vernon Est. Sub. = 2457.98')

C. Description of monument for corner and accessories established to perpetuate locating the position of the corner:

K-6 Replaced 1/2" rebar with a 5/8" x 24" rebar with brass cap stamped "Oakland County Remonumentation P.S. #25854" in an existing monument box.

PK Nail & Tag Stamped "Oakland Co. Remonumentation P.S. #25854" in N Side Guy Pole N 80° W 45.27'
PK Nail & Tag Stamped "Oakland Co. Remonumentation P.S. #25854" in W Side P. Pole S 21° E 120.18'
PK Nail & Tag Stamped "Oakland Co. Remonumentation P.S. #25854" in S Side P. Pole N 90° E 52.03'
C/L Top of Hydrant S 21° W 100.70'

The selected location is accepted by the Contractor and is generally accepted by professional surveyors as the best available evidence of the position of the original corner.



Signed by Randy J. Kolehouse Date 5/20/97
EARTH TECH
Surveyor's Michigan License No. 25854