

Colo, Minn. (3)

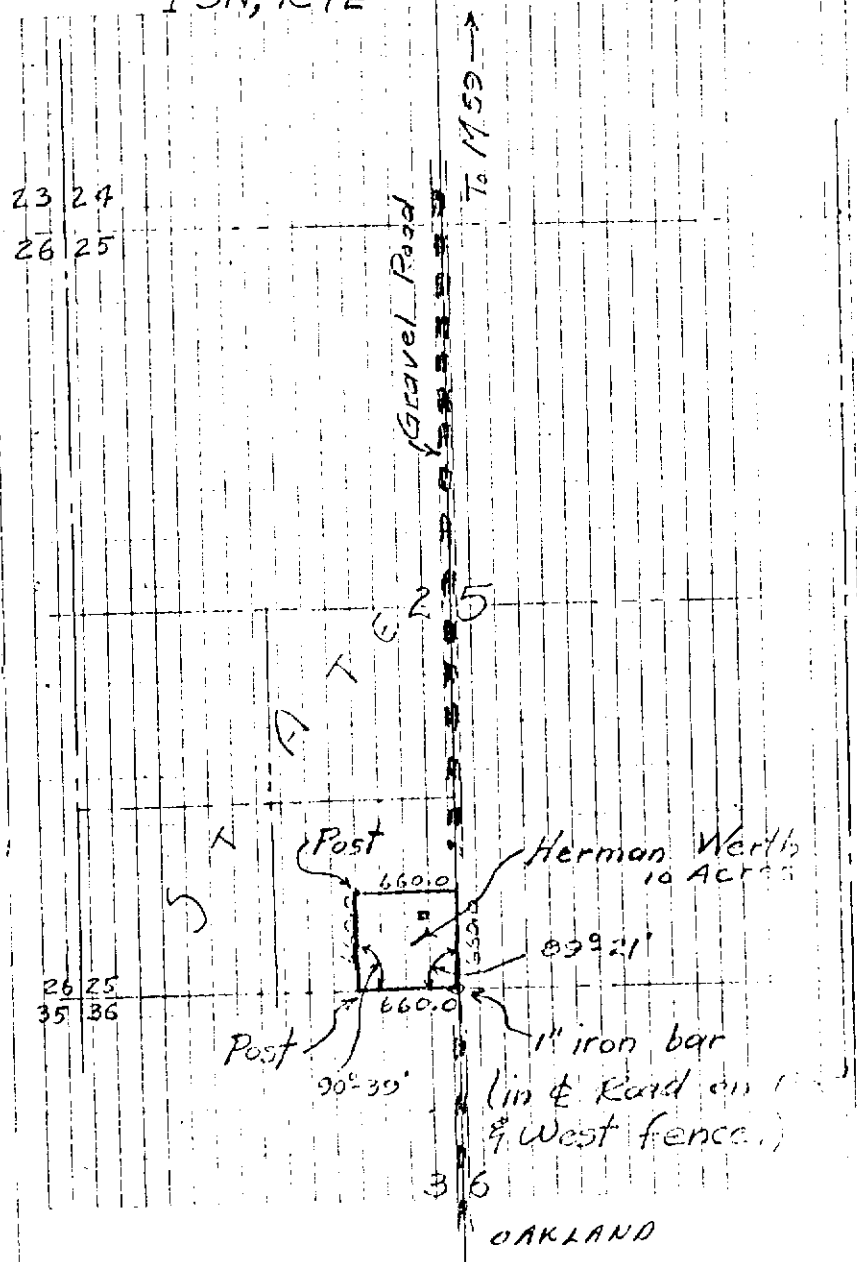
T3N, R7E

Notes 12/13/46
 Charles Harris, Area Manager
 assisted in this survey

Placed 1" iron bar in center of NORTH AND SOUTH ROAD and on line with an old EAST AND WEST fence. An old local resident, Herman Werth stated the original corner was out, and our location was correct to the best of his knowledge. This corner is the $\frac{1}{4}$ corner between sections 25 & 26 T3N, R7E.

From this corner, we chained 660.0 feet NORTH down center of road and set a point (manure spreader tooth). This established the East side of Herman Werth property, minus 33 feet for road.

Then chained West from $\frac{1}{4}$ corner we previously had set ($\frac{25}{36}$) 660.0 feet and set a stake for anchor post. This established the South



OAKLAND