

**SURVEY &
REMONUMENTATION**

Mar 14 95 04 13 91

OK - T. SMITH

LIBER 15290 PC 577

MAY - 1 1995

LAND CORNER RECORDATION CERTIFICATE

Filing Requirement of Act 74, Mich. P.A. 1970 7.00 MISC RECORDING CHG - IN HOUSE

For corners in **COMMISSION**
OAKLAND
(County)

Located In: WATERFORD Corner Code #F

\$ 2.00 REMON CHG - IN HOUSE
14 MAR 95 9:14 A.M. RECEIPT# 45B
PAID RECORDED - OAKLAND COUNTY
LYNN D. ALLEN, CLERK/REGISTER OF DEEDS

Compliance with
ACT 345, P.A. 1990

APPROVED ON: 12-30-94
OAKLAND COUNTY REMONUMENTATION
PEER GROUP COMMITTEE

Register of Deeds Stamp & File Number

- 1. Public Land Survey T 3 N R 9 E F-7
T R
T R
T R
- 2. Property Controlling S T R
in Section S T R
- 3. Miscellaneous S T R
Property in Sec. S T R

- 4. Lot No. _____, Recorded Plat _____
- 5. Private Claims _____

I, THOMAS M. SMITH, in a field survey on NOVEMBER 29, 19 1994, do hereby certify that under requirements of P.A. 74, Michigan P.A. of 1970, the corner points mentioned in lines 1 and 2 above were in conformance with regulations and rules therefore as required in the current manual of survey instructions of the United States Department of the Interior, Bureau of Land Management or by a decree of a Court of Law and/or that the corner points mentioned in lines 3, 4 and 5 above were in conformance with the rules of the Michigan Board of Land Surveyors or by a Decree of a Court of Law; established, re-established, monumented, re-monumented, recovered, found as expressed below:

NOTE: Not more than 4 corners, all in the same town and range, may be recorded on this certificate.

A. Description of original monument and accessories and/or subsequent restoration:

POST G.L.O. 1817	P.K. & BRASS CAP ROAD COMMISSION 1963	STAMPED MDSHT BRASS CAP RLS. #19841 IN MON BOX L.C.R.C. L.7400 P. 317 HOOTH, 1978
---------------------	---	---

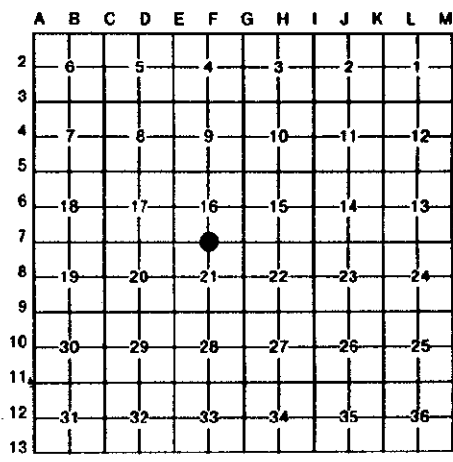
B. Description of corner evidence found and/or method applied in restoring or reestablishing corner:

I FOUND A MDOT DISK ON TOP OF A ROD IN A MONUMENT BOX IN THE CENTER LANE OF M-59 HIGHWAY. I VERIFIED THE CORNER FROM THE L.C.R.C. RECORDED IN LIBER 7400, PAGE 317. ALSO A MEASURED SOUTHERLY TO A FENCE CORNER REPRESENTING N.W. CORNER OF HOLIDAY FARMS SUB. MEASURED DISTANCE WEST MATCHES ADJOINING PLAT DISTANCES VERY CLOSELY.

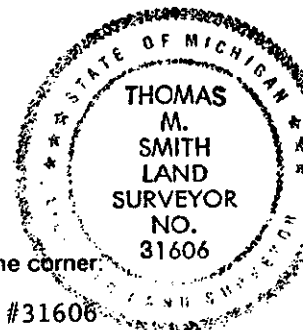
C. Description of monument for corner and accessories established to perpetuate locating the position of the corner:

F-7: I REPLACED THE MDOT BRASS DISC WITH A 5/8" ROD WITH BRASS REMON CAP #31606
S 15 E. 118.75' to N.W. corner funeral home.
S 35 E. 92.31' to remon tag W. side 10" maple.
N 15 E. 62.62' to top center south bolt in light pole.
NORTH 122.10' to S.E. corner building.

THE SELECTED LOCATION IS ACCEPTED BY ME AND IS GENERALLY ACCEPTED BY PROFESSIONAL SURVEYORS AS THE AVAILABLE EVIDENCE OF THE ORIGINAL CORNER.



7.00
2.00
Ithch



Signed by [Signature] Date DECEMBER 19, 1994
Surveyor's Michigan License No. 31606