

SURVEY & REMONUMENTATION

94 254965

LIBER 14992 PC 082

LAND CORNER RECORDATION CERTIFICATE
Filing Requirement of Act 74, Mich. P.A. 1970

MAY - 1 1995

For corners in **COMMISSION OAKLAND** (County)

Located In: **AVON TOWNSHIP** Corner Code #

OK - T. SMITH

Compliance with ACT 345, P.A. 1990

APPROVED ON: 1-26-94
OAKLAND COUNTY REMONUMENTATION PEER GROUP COMMITTEE

Register of Deeds Stamp & File Number

- 1. Public Land Survey T-3-N R-11-E G-7
T ___ R ___
T ___ R ___
T ___ R ___
- 2. Property Controlling in Section S ___ T ___ R ___
S ___ T ___ R ___
- 3. Miscellaneous Property in Sec. S ___ T ___ R ___
S ___ T ___ R ___

- 4. Lot No. _____, Recorded Plat _____
- 5. Private Claims _____

I, DAVID PAWLACZYK, in a field survey on 12-1-30, 19 93, do hereby certify that under requirements of P.A. 74, Michigan P.A. of 1970, the corner points mentioned in lines 1 and 2 above were in conformance with regulations and rules therefore as required in the current manual of survey instructions of the United States Department of the Interior, Bureau of Land Management or by a decree of a Court of Law and/or that the corner points mentioned in lines 3, 4 and 5 above were in conformance with the rules of the Michigan Board of Land Surveyors or by a Decree of a Court of Law: established, re-established, monumented, re-monumented, recovered, found as expressed below:

NOTE: Not more than 4 corners, all in the same town and range, may be recorded on this certificate.

A. Description of original monument and accessories and/or subsequent restoration:

*POST WAS SET PER GOVERNMENT LAND OFFICE NOTES
N. 36° E. 46 LINKS FORKED 10" ELM
S. 56° W. 45 LINKS 36" LINDEN*

B. Description of corner evidence found and/or method applied in restoring or reestablishing corner:

*FOUND 1/2" RE-ROD IN MONUMENT BOX
PREVIOUS LAND CORNER RECORDATION CERTIFICATES
LIBER 6021, PAGE 460
LIBER 6877, PAGE 553
LIBER 7034, PAGE 560
LIBER 7716, PAGE 208
LIBER 11062, PAGE 227
LIBER 11232, PAGE 625*

\$ 7.00 MISCELLANEOUS RECORDING
\$ 2.00 REMONUMENTATION
22 SEP 94 8:40 A.M. RECEIPT# 338
PAID RECORDED - OAKLAND COUNTY
LYNN D. ALLEN, CLERK/REGISTER OF DEEDS

C. Description of monument for corner and accessories established to perpetuate locating the position of the corner:

*REPLACED THE 1/2" RE-ROD WITH P.A. 345 BRASS
CAP STAMPED # 17632 ON 3/4" X 24" IRON ROD.
ACCESSORIES ESTABLISHED
N. 80° E., 84.17' TOP BOLT GUARDRAIL WEST END BRIDGE DEK
S. 30° E., 72.95' WITNESS TAG ON EAST FACE UTILITY POLE
S. 60° W., 113.34' WITNESS TAG ON NORTHWEST FACE UTILITY POLE
N. 50° W., 117.80' E SOUTHEAST BOLT TRAFFIC POLE*

Signed by

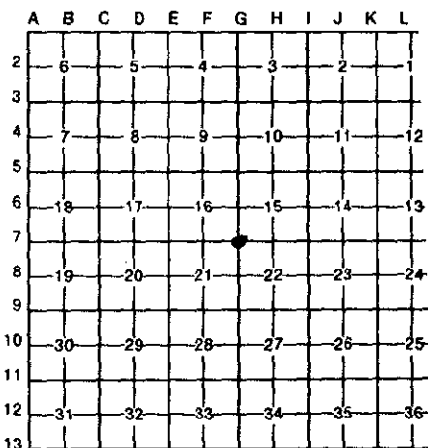
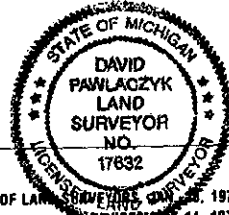
[Signature]

Date

1-11-94

Surveyor's Michigan License No.

17632



[Handwritten initials]