

SURVEY & REMONUMENTATION

MAY 24 2000

LIBER 20657 - 302
LAND CORNER RECORDATION CERTIFICATE
 Filing Requirement of Act 74, Mich. P.A. 1970

374933

SECTION

LIBER 20657 PAGE 302
 \$9.00 MISC RECORDING
 \$2.00 REMONUMENTATION
 10/12/1999 08:06:33 A.M. RECEIPT# 88906
 PAID RECORDED - OAKLAND COUNTY
 G. WILLIAM CADDELL, CLERK/REGISTER OF DEED

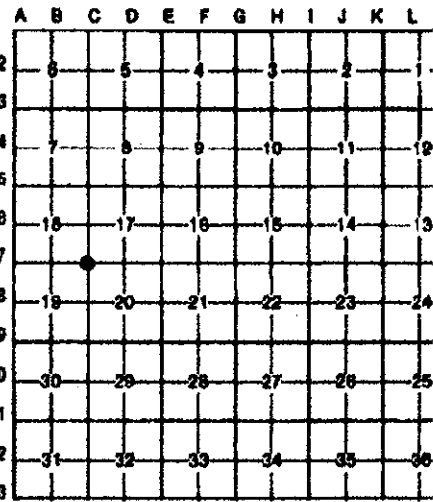
For corners in

<u>Oakland</u> (county)	Located In: Rose Township	Corner Code #	
1. Public Land Survey	T4N R7E	C-7	
	T R		
	T R		
	T R		
2. Property Controlling in Section	S T R		
	S T R		
3. Miscellaneous Property in Sec.	S T R		
	S T R		

Compliance with
 ACT 345, P.A. 1990
 APPROVED ON: 4-21-99 JS
 OAKLAND COUNTY REMONUMENTATION
 PEER GROUP COMMITTEE
 Register of Deeds Stamp & File Number

4. Lot No. _____ Recorded Plat _____
5. Private Claims _____

I, Joseph C. Kapelczak, in a field survey on March 18, 1998, do hereby certify that under requirements of P.A. 74, Michigan P.A. of 1970, the corner points mentioned in lines 1 and 2 above were in conformance with regulations and rules therefore as required in the current manual of survey instructions of the United States Department of the Interior, Bureau of Land Management or by a decree of a Court of Law and/or that the corner points mentioned in lines 3, 4 and 5 above were in conformance with the rules of the Michigan Board of Land Surveyors or by a Decree of a Court of Law; established, re-established, monumented, re-monumented, recovered, found as expressed below:



NOTE: Not more than 4 corners, all in the same town and range, may be recorded on this certificate.

A. Description of original monument and accessories and/or subsequent restoration:

Set post in 1816 G.L.O. Survey. There are five LCRC's recorded at Oakland County; Fieldhauser 1973, Mitchell 1973, King 1979 Ward 1987 and Ward 1992.

B. Description of corner evidence found and/or method applied in restoring or reestablishing corner:

Two monuments were recovered at this location. One being a 1/2" iron in a monument box and the other a PK nail with an unreadable tag in the asphalt surface which is believed to be over an iron in the asphalt. The iron in the monument box was first recorded by Mitchell in 1973 as a 1/2" iron, then recorded again in 1973 by Fieldhauser who stated he found an iron rod. Then in 1979 King records a spike 4.6' south and 2.5' east of the monument box. In 1988 Ward records a 1/2" iron pipe, and in 1993 Ward records a monument box, being N 45°E 3.66' to a spike (bent) in the pavement. At the present time, the PK nail is S 31°30'41"E 5.24' from the iron in the monument box. A certificate of survey in L 15938 P 589 is recorded by Erickson using the PK nail as found. It should be noted that the monument box agrees with surveys that were performed in the west 1/2 of Section 17 and the west 1/2 of Section 20 and the PK nail agrees with surveys performed in the northeast 1/4 of Section 19 and the southeast 1/4 of Section 18 with some exceptions in the southeast 1/4 of Section 18. It appears to me that the oldest title evidence will agree with the iron in the monument box as found.

In recommending to the Peer Group Committee which of the monuments represents C-7, I attached an exhibit solving C-7 by double proportional distance. A review of that data points to the monument box as the most appropriate monumentation to C-7, therefore, I recommend staying with the iron in the monument box as the proper location for C-7 and the PK nail location as a property controlling corner.

Recovered Witnesses:

- *N81°E 29.77' PK nail south side 6" Locust.
- *S51°E 40.87' PK nail southwest side 6" Locust.
- *S20°W 80.49' nail with tag #11795 east side Twin 10" Maple.
- S20°W 80.59' nail with RCOC tag east side Twin 10" Maple.
- *West 37.07' nail with tag #32332 south side power pole.
- *N 58°W 47.18' nail with "Survey Pt" tag south side Twin 14" Oak.
- N 48°E 81.52' nail with washer southeast side power pole.
- *S 70°E 34.40' nail with tag #32332 north side 6" Locust.

JKR

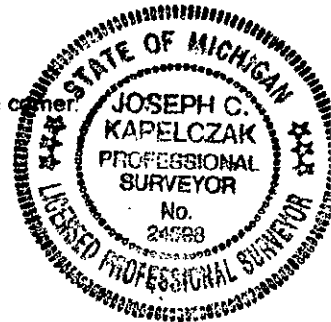
C. Description of monument for corner and accessories established to perpetuate locating the position of the corner.

Set Oakland County Remonumentation Brass Cap stamped #24598 in existing monument box.

Set Witnesses:

- *N 81°E 29.77' OCRT #24598 Mag nail south side 6" Locust.
- *West 37.07' OCRT #24598 Mag nail south side power pole.
- *N 58°W 47.18' OCRT #24598 Mag nail south side twin 14" Oak.
- *S 70°E 34.40' OCRT #24598 Mag nail north side 6" Locust.

*Reused Recovered Witness



Signed by Joseph C. Kapelczak Date 4/17/99

Surveyor's Michigan License No. 24598