

MAY 24 2000

LIBER 19816PG273

SECTION

LAND CORNER RECORDATION CERTIFICATE
Filing Requirement of Act 74, Mich. P.A. 1970

\$9.00 MISC RECORDING
\$2.00 REMONUMENTATION
03/01/1999 02:59:15 P.M. RECEIPT# 4397
PAID RECORDED - OAKLAND COUNTY
G. WILLIAM CADDELL, CLERK/REGISTER OF DEEDS

For corners in

Oakland (county)	Located In: Rose Township	Corner Code #
1. Public Land Survey	T4N R7E	D-3
	T R	
	T R	
	T R	
2. Property Controlling in Section	S T R	
	S T R	
3. Miscellaneous Property in Sec.	S T R	
	S T R	

Compliance with
ACT 345, P.A. 1990

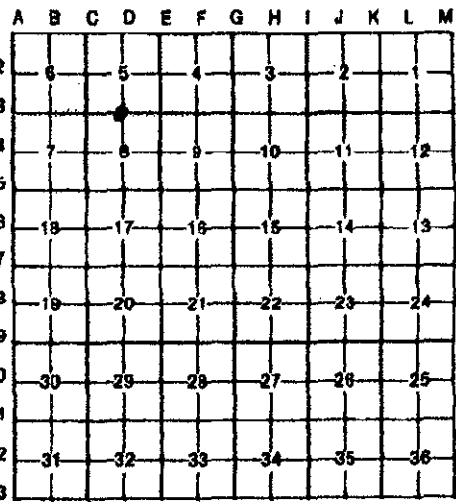
APPROVED ON: 2-3-99 JS
OAKLAND COUNTY REMONUMENTATION
PEER GROUP COMMITTEE
Register of Deeds Stamp & File Number

19890661-001

4. Lot No. _____, Recorded Plat _____

5. Private Claims _____

I, Joseph C. Kapelczak, in a field survey on March 11, 1998, do hereby certify that under requirements of P.A. 74, Michigan P.A. of 1970, the corner points mentioned in lines 1 and 2 above were in conformance with regulations and rules therefore as required in the current manual of survey instructions of the United States Department of the Interior, Bureau of Land Management or by a decree of a Court of Law and/or that the corner points mentioned in lines 3, 4 and 5 above were in conformance with the rules of the Michigan Board of Land Surveyors or by a Decree of a Court of Law; established, re-established, monumented, re-monumented, recovered, found as expressed below:



NOTE: Not more than 4 corners, all in the same town and range, may be recorded on this certificate.

A. Description of original monument and accessories and/or subsequent restoration:

Set post in 1816 G.L.O. Survey.
There are two LCRC's recorded at Oakland County; Albright 1973, 1/2" rerod, Smith 1977.

B. Description of corner evidence found and/or method applied in restoring or reestablishing corner:

Recovered a 1/2" iron at this location. Validated location with monumentation recovered on the north R.O.W. line of Rattalee Lake Road east of the corner and monumentation found in recorded survey L.6362 P.755 in Section 5 by James Smith. It should be noted that there were three witnesses recovered in the LCRC's L.6373 P.866 by Albright.

Recovered Witnesses:

- *S 10°W 29.92' nail west side 8" Poplar.
- *S45°E 11.90' nail west side 10" dead Oak.
- *S80°E 26.58' nail south side Twin 16" Oak.
- *N 0°E 12.45' nail west side 24" Oak.

C. Description of monument for corner and accessories established to perpetuate locating the position of the corner:

Set Oakland County Remonumentation Brass Cap and 5/8" iron.

Set Witnesses:

- *S 10°W 29.92' Mag nail with OCRT stamped #24598 west side 8" Poplar.
- S 45°E 13.63' Mag nail with OCRT stamped #24598 southwest side Twin 18" Oak.
- S 80°E 26.68' Mag nail with OCRT stamped #24598 south side Twin 16" Oak.
- *N 0°E 12.45' Mag nail with OCRT stamped #24598 west side 24" Oak.

*Reused Recovered Witnesses



500
2nd

2/12

Signed by Joseph C. Kapelczak

Date 2/5/99

Surveyor's Michigan License No. 24598