

LIBER 19012PC356

LAND CORNER RECORDATION CERTIFICATE
Filing Requirement of Act 74, Mich. P.A. 1970

For corners in

Oakland (county) Located In: Corner Code #
1. Public Land Survey T 4N R 8E G-13
2. Property Controlling in Section S T R REFERENCE TO SURVEY & REMONUMENTATION
3. Miscellaneous Property in Sec. S T R MAP 21 2000

\$ 7.00 MISCELLANEOUS RECORDING
\$ 2.00 REMONUMENTATION
2 OCT 98 8:45 A.M. RECEIPT # 8A
PAID RECORDED - OAKLAND COUNTY
LYNN D. ALLEN, CLERK/REGISTER OF DEEDS

Compliance with ACT 345, P.A. 1990

APPROVED ON: 11-8-98 JS
OAKLAND COUNTY REMONUMENTATION PEER GROUP COMMITTEE
Register of Deeds Stamp & File Number

4. Lot No. Recorded Plat SECTION
5. Private Claims

I, James E. Kovas, in a field survey on September 23, 1997, do hereby certify that under requirements of P.A. 74, Michigan P.A. of 1970, the corner points mentioned in lines 1 and 2 above were in conformance with regulations and rules therefore as required in the current manual of survey Instructions of the United States Department of the Interior, Bureau of Land Management or by a decree of a Court of Law and/or that the corner points mentioned in lines 3, 4 and 5 above were in conformance with the rules of the Michigan Board of Land Surveyors or by a Decree of a Court of Law; established, re-established, monumented, re-monumented, recovered, found as expressed below:

Grid table with columns A-M and rows 2-13. A dot is marked at the intersection of column G and row 10.

NOTE: Not more than 4 corners, all in the same town and range, may be recorded on this certificate.

A. Description of original monument and accessories and/or subsequent restoration: G-13

- 1823- Government Land office (G.L.O.) T. Wampler, D.S., set standard corner post on township line
1970 Ray Kostecke (Unrecorded survey), no monument described
1975 Walter Neuman #9435 (Recorded survey Liber 6465 Page 817), found 1" iron pipe
1975 Walter Neuman #9435 (Recorded survey April 23, 1975), no monument described
1985 Edward Anderson #11495 (Unrecorded survey), found 1" iron pipe in centerline of Crosby Lake Road

Distances: G-13 to G-1 (White Lake) 33.0' east (50 links - GLO - 1823)
G-13 to G-1 (White Lake) 50.0' east (Kostecke - 1970)
G-13 to G-1 (White Lake) 50.74' east (Wade-Trim - 1997)
G-13 to F-13 2691.5' (Neuman - 1975)
G-13 to F-13 2689.68' (Wade-Trim - 1997)
G-13 to H-13 2652.00' (Kostecke - 1970)
G-13 to H-13 2652.00' (Wade-Trim - 1997)
(H-13 was reset at Kostecke's survey)

B. Description of corner evidence found and/or method applied in restoring or reestablishing corner:

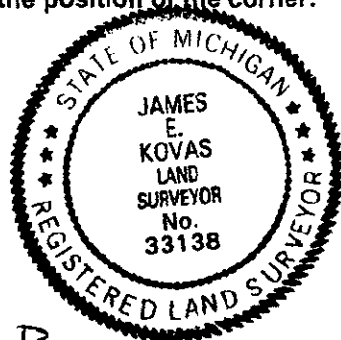
G-13 Found 1-1/4" iron bar (could be pipe with dirt harden inside) 0.8' under bituminous road surface (only 0.15' of bituminous)

WITNESSES FOUND: East 50.47' Found 1/2" iron at bituminous surface, F-1 White Lake Township
N 76 E 135'46" Found Tri-County Tag w/nail in s face 14" Pine Tree
S 37 E 73.97 Found Tri-county Tag w/nail in W face 7" White Cherry

700 FILE
200

C. Description of monument for corner and accessories established to perpetuate locating the position of the corner:

G-13 Set monument box and 1/2" iron with Remon Cap #33138
WIT: N 76 E 135.12' Set Remon Tag w/mag nail in NW face 14' Pine
S 37 E 74.17' Set Remon Tag w/mag nail in E face 7" White Cherry
East 50.47' Found iron in bituminous road, F-1 White Lake Township
S 20 E 86.00' Set Remon Tag w/mag nail in W face 7" Elm



Signed by James E. Kovas Date 9/10/98

Surveyor's Michigan License No. 33138