

MAY 24 2000

SECTION

LIBER 19238 PC043

LAND CORNER RECORDATION CERTIFICATE
Filing Requirement of Act 74, Mich. P.A. 1970 \$ 9.00

For corners in

Oakland (County)	Located in:	Corner Code #
1. Public Land Survey	T 4NR 8E	I-6
	T R	
	T R	
	T R	
2. Property Controlling in Section	S T R	
	S T R	
3. Miscellaneous Property in Sec.	S T R	
	S T R	

MISCELLANEOUS RECORDING
\$ 2.00 REMONUMENTATION
4 DEC 98 8:38 A.M. RECEIPT# 48
PAID RECORDED - OAKLAND COUNTY
G. WILLIAM CARDELL
CLERK/REGISTER OF DEEDS

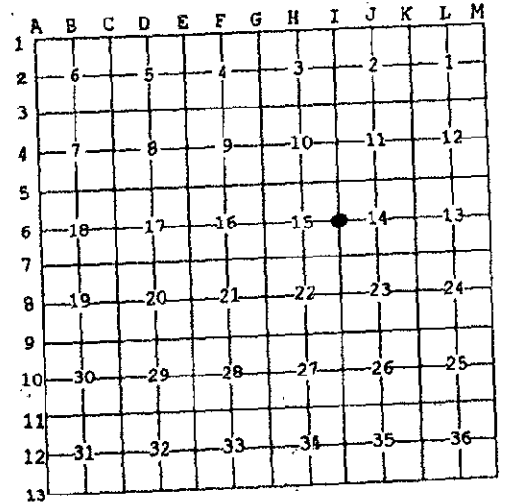
Compliance with
ACT 345, P.A. 1990
APPROVED ON: 4-08-98-55
OAKLAND COUNTY REMONUMENTATION
PEER GROUP COMMITTEE

Register of Deeds Stamp & File Number

4. Lot No. _____, Recorded Plat _____
5. Private Claims _____

I, Grant J. Ward, R.L.S., in a field survey on January 29 1998 do hereby state that under requirements of P.A. 74, Michigan P.A. of 1970, the corner points mentioned in lines 1 and 2 above were in conformance with regulations and rules therefore as required in the current manual of survey instructions of the United States Department of the Interior, Bureau of Land Management or by a decree of a Court of Law and/or that the corner points mentioned in lines 3, 4 and 5 above were in conformance with the rules of the Michigan Board of Land Surveyors or by a Decree of a Court of Law; established, re-established, monumented, recovered, found as expressed below:

NOTE: Not more than 2 corners, all in the same town and range, may be recorded on this certificate.



A. Description of original monument and accessories and/or subsequent restoration:

I-6 Post, per G.L.O. Notes.

B. Description of corner evidence found and/or method applied in restoring or reestablishing corner:

I-6 West 1/4 Corner of Section 14, T. 4 N., R. 8 E. Found 1/2 Iron Pipe.
Previously Recorded in L. 11754 P. 498 (3) and L. 15655 P. 272 (4) of Oakland County Records.

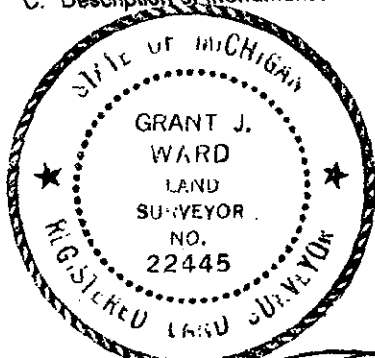
(n) indicates the number of references that confirms this corner by dimensional tie.

This corner location is accepted by the contractor and is generally accepted by professional surveyors as the best available evidence of the position of the original corner.

G.W. FILE
2000

C. Description of monument for corner and accessories established to perpetuate locating the position of the corner:

- I-6 Set Monument and Brass Remonumentation Cap.
- N 50° E 20.47' Set MAG Nail & Remonumentation Disc in South face of 24" Cherry.
- S 15° W 38.28' Set MAG Nail & Remonumentation Disc in Northwest face of 14" Cherry.
- S 50° W 31.64' Set MAG Nail & Remonumentation Disc in East face of 18" Oak.
- N 50° W 14.67' Set MAG Nail & Remonumentation Disc in West face of 10" Maple.



Signed by _____
Surveyor's Michigan License No. 22445

Date January 30, 1998