

1999

LIBER 19238 PC065

1998-4 98347680

SECTION

LAND CORNER RECORDATION CERTIFICATE  
Filing Requirement of Act 74, Mich. P.A. 1970

\$ 9.00 MISCELLANEOUS RECORDING  
\$ 2.00 REMONUMENTATION  
4 DEC 98 8:40 A.M. RECEIPT 48  
PAID RECORDED - OAKLAND COUNTY  
G. WILLIAM CAIDELL  
CLERK/REGISTER OF DEEDS

Compliance with  
ACT 345, P.A. 1990  
APPROVED ON: 2. 09. 98 JS  
OAKLAND COUNTY REMONUMENTATION  
PEER GROUP COMMITTEE

Register of Deeds Stamp & File Number

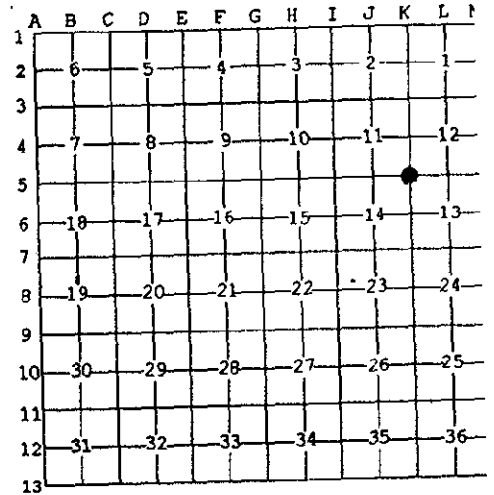
For corners in

Oakland (County)	Located In:	Corner Code #
1. Public Land Survey	T 4N R 8E	K-5
	T R	
	T R	
	T R	
2. Property Controlling in Section	S T R	
	S T R	
3. Miscellaneous Property in Sec.	S T R	
	S T R	

4. Lot No. \_\_\_\_\_, Recorded Plat \_\_\_\_\_  
5. Private Claims \_\_\_\_\_

I, Grant J. Ward, R.L.S., in a field survey on November 20, 1997 do hereby state that under requirements of P.A. 74, Michigan P.A. of 1970, the corner points mentioned in lines 1 and 2 above were in conformance with regulations and rules therefore as required in the current manual of survey instructions of the United States Department of the Interior, Bureau of Land Management or by a decree of a Court of Law and /or that the corner points mentioned in lines 3, 4 and 5 above were in conformance with the rules of the Michigan Board of Land Surveyors or by a Decree of a Court of Law, established, re-established, monumented, recovered, found as expressed below:

NOTE: Not more than 2 corners, all in the same town and range, may be recorded on this certificate.



A. Description of original monument and accessories and/or subsequent restoration:

K-5 Post, per G.L.O. Notes.

B. Description of corner evidence found and/or method applied in restoring or reestablishing corner:

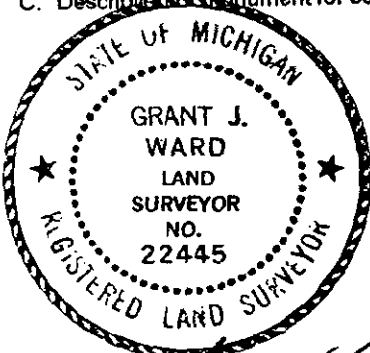
K-5 Southwest Corner of Section 12, T. 4 N., R. 8 E. Found 1/2" Iron Rod in Monument Box 3' +/- South of Centerline of Davisburg Road.

Previously Recorded in L. 5974 P. 620 (0), L. 14266 P. 075 (3), L. 14645 P. 001 (3), L. 15245 P. 582 (3) and L. 16037 P. 642 (3) of Oakland County Records.

(n) Indicates the number of references that confirms this corner by dimensional tie.

This corner location is accepted by the contractor and is generally accepted by professional surveyors as the best available evidence of the position of the original corner.

C. Description of monument for corner and accessories established to perpetuate locating the position of the corner:



- K-5 Set 5/8" Iron Rod & Remonumentation Cap in Monument Box.
- N 05° E 32.21' Set MAG Nail & Remonumentation Disc in East face of Utility Pole.
- N 60° E 94.02' Set MAG Nail & Remonumentation Disc in Northwest face of 14" Cedar.
- S 05° W 47.67' Set MAG Nail & Remonumentation Disc in West face of Utility Pole.
- West 3.02' Set MAG Nail & Remonumentation Disc in Bit.
- North 33.00' Found Iron Rod & Cap #10057.

Signed by \_\_\_\_\_  
Surveyor's Michigan License No. 22445

Date January 2, 1998

GOOD FILE  
200

MAR 1 1999

SECTION  
FEBRUARY 1, 1998

Corner Code: K-5

DOSSIER FOR: THE SOUTHEAST CORNER OF SECTION 11, SPRINGFIELD TOWNSHIP, T 4 N, R 8 E, OAKLAND COUNTY, MICHIGAN. Prepared under contract with the County of Oakland Under Act 345 of the Public Acts of 1990.

HISTORY:

The boundary of this Township was surveyed by Alex Holmes, D.S. in 1815 and Joseph Wampler, D.S. set the Corners for the subdivision of it in 1823.

SPECIAL NOTES:

This Corner has been accepted and used since 1944 as evidenced by the Amended Plat of Jossman Acres No. 1, as recorded in Liber 55, Page 36. This Corner was first recorded by Forrest R. Jones, Surveyor in Liber 5975, Page 328 in 1972.

COLLATERAL EVIDENCE:

This Corner lies 3 feet South of the Centerline of Davisburg Road. We found an iron rod and cap #10057 33.00 feet North of the Corner. There is a fence line running East 29 feet South of the Corner.

We searched at least 50 feet in each direction for other stakes and found none that might represent the Corner.

The measured dimensions to the South 1/4 Corner and the East 1/4 Corner of Section 11 and the South 1/4 Corner of Section 12 recorded distances within 0.4 feet, exactly and 0.04 feet respectively.

SURVEYOR'S RECOMMENDATIONS:

The selected location is accepted by the Contractor and is generally accepted by Professional Surveyors as the best available evidence of the position of the original Corner. Therefore, I recommend that the Peer Review Group accept this Corner as monumented, with the references as shown on the enclosed form prepared according to Act 74 of the Public Acts of 1970.

---

Grant J. Ward, R.L.S.  
License No. 22445