

**SURVEY &  
REMONUMENTATION**

LIBER **14960** PC **097**

**94 242-127**

**MAY - 1 1995 LAND CORNER RECORDATION CERTIFICATE**  
Filing Requirement of Act 74, Mich. P.A. 1970

OK - T. SMITH

For corners in **COMMISSION**  
Oakland (County) Located in: Orion Township Corner Code =#

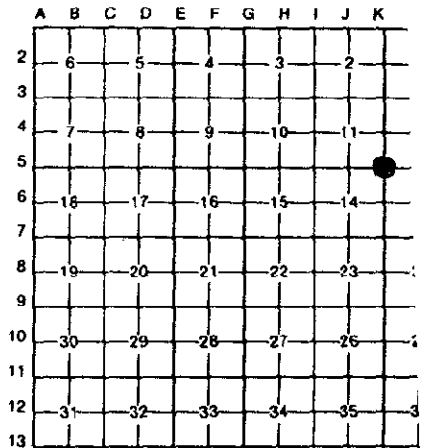
1. Public Land Survey	T	4	N	R	10	E	K-5
	T		R				
	T		R				
	T		R				
2. Property Controlling in Section	S		T		R		
	S		T		R		
3. Miscellaneous Property in Sec.	S		T		R		
	S		T		R		

**\$ 7.00 MISCELLANEOUS RECORDING**  
**\$ 2.00 REMONUMENTATION**  
8 SEP 94 3:17 P.M. RECEIPT# 134E  
PAID RECORDED - OAKLAND COUNTY  
LYNN D. ALLEN CLERK/REGISTER OF DEED  
APPROVED ON: 1-5-94  
OAKLAND COUNTY REMONUMENTATION  
PEER GROUP COMMITTEE  
Register of Deeds Stamp & File Number

4. Lot No. \_\_\_\_\_, Recorded Plat \_\_\_\_\_  
5. Private Claims \_\_\_\_\_

I, Huston K. Kennedy, in a field survey on November 18, 19 93, do hereby certify that under requirements of P.A. 74, Michigan P.A. of 1970, the corner points mentioned in lines 1 and 2 above were in conformance with regulations and rules therefore as required in the current manual of survey instructions of the United States Department of the Interior, Bureau of Land Management or by a decree of a Court of Law and/or that the corner points mentioned in lines 3, 4 and 5 above were in conformance with the rules of the Michigan Board of Land Surveyors or by a Decree of a Court of Law; established, re-established, monumented, re-monumented, recovered, found as expressed below.

**NOTE: Not more than 4 corners, all in the same town and range, may be recorded on this certificate.**



**A. Description of original monument and accessories and/or subsequent restoration:**

1817-GLO Wampler, D.S.; Set Post; 14" Black Oak N69°E 17 Lnks; 12" White Oak S04°W 41 Lnks  
1972-Heil, P.S. #18993; LCRC L.5946, Pg.787-788 - Fnd 1/2" Iron Rod

**B. Description of corner evidence found and/or method applied in restoring or reestablishing corner:**

1993 Kennedy Surveying, Inc. - Kennedy, P.S. #17623 - Fnd 1/2" iron rod located in the center of Bald Mountain Road to the South, which is bituminous surface, and 4' North of the center of Clarkston Road, which is gravel surface.

One witness point from the 1972 LCRC is existing and it was used to recover and verify the found 1/2" iron rod.

I accepted the found 1/2" iron rod as the best evidence of the original corner position

**C. Description of monument for corner and accessories established to perpetuate locating the position of the corner:**

K-5 I replaced the found 1/2" iron rod with a 5/8" x 24" iron rod with a 2" diameter cap stamped Oakland County Remonumentation P.S. #17623.

- N50°E-37.12 ft-Set PK & Remon. Washer NW face Power Pole
- S18°E-69.04 ft-Set PK & Remon. Washer East face 6" Ash
- S45°E-92.57 ft-Set PK & Remon. Washer SW face 14" Poplar
- S20°W-84.14 ft-Set PK & Remon. Washer East face 23" Poplar

The selected location is accepted by me and is generally accepted by \_\_\_\_\_ as the best available evidence of the position of the original position



Signed by Huston K. Kennedy  
Surveyor's Michigan License No. 17623

Date June 22, 1994