

SURVEY & REMONUMENTATION

LIBER 15213 PG 009

JAN 20 95 011209

MAY - 1 1995

LAND CORNER RECORDATION CERTIFICATE

OK - T. SMITH

93-1010
For corners in

COMMISSION

Filing Requirement of Act 74, Mich. P.A. 1976

\$ 9.00 MISCELLANEOUS RECORDING
\$ 2.00 REMONUMENTATION

20 JAN 95 7:41 A.M. RECEIPT# 10B
PAID RECORDED - OAKLAND COUNTY
LYNN D. ALLEN, CLERK/REGISTER OF DEEDS

Oakland Located In: Oakland Corner Code #

- | | | | | | |
|------------------------------------|---|------------|---|-------------|------------|
| 1. Public Land Survey | T | <u>4</u> N | R | <u>11</u> E | <u>C-4</u> |
| | T | | R | | |
| | T | | R | | |
| | T | | R | | |
| 2. Property Controlling in Section | S | | T | R | |
| | S | | T | R | |
| 3. Miscellaneous Property in Sec. | S | | T | R | |
| | S | | T | R | |

Compliance with
ACT 345, P.A. 1990

APPROVED ON: 12-28-94
OAKLAND COUNTY REMONUMENTATION
PEER GROUP COMMITTEE
Register of Deeds Stamp & File Number

4. Lot No. _____, Recorded Plat _____
5. Private Claims _____

I, Grant J. Ward, RLS in a field survey on March 7, 1994

do hereby certify that under requirements of P.A. 74, Michigan P.A. of 1970, the corner points mentioned in lines 1 and 2 above were in conformance with regulations and rules therefore as required in the current manual of survey instructions of the United States Department of the Interior, Bureau of Land Management or by a decree of a Court of Law and/or that the corner points mentioned in lines 3, 4 and 5 above were in conformance with the rules of the Michigan Board of Land Surveyors or by a Decree of a Court of Law; established, re-established, monumented, re-monumented, recovered, found as expressed below:

NOTE: Not more than 4 corners, all in the same town and range, may be recorded on this certificate.

A. Description of original monument and accessories and/or subsequent restoration:

C-4 Post, per G.L.O. Notes.

B. Description of corner evidence found and/or method applied in restoring or reestablishing corner:

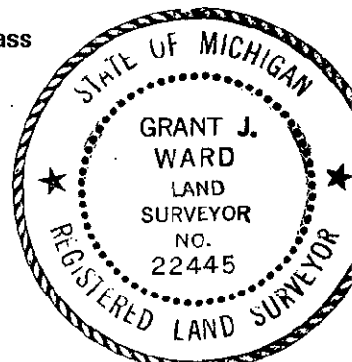
C-4 Corner common to Sec. 7 and 8, T. 4 N., R. 11 E. Found 1/2" Iron Rod in Monument Box in the Centerline of Adams Road and 2" North of the Centerline of Stoney Creek Road. Corner lines up with fence to North. This corner location is accepted as the best available evidence of the position of the corner.

Previously Unrecorded in Oakland County Records.

C. Description of monument for corner and accessories established to perpetuate locating the position of the corner:

C-4 Corner common to Sec. 7 and 8, T. 4 N., R. 11 E. Set 5/8" Iron Rod and Brass Cap #22445 adjoining Found 1/2" Iron Rod in Monument Box.

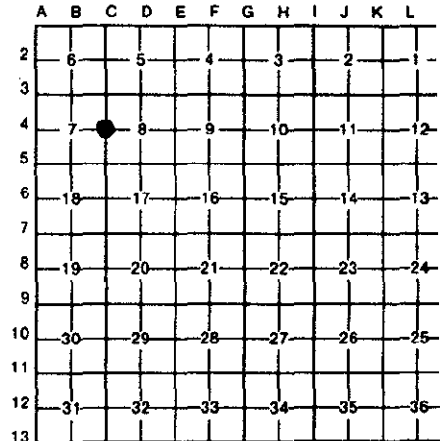
- S. 65° E. 79.56' Set P.K. Nail & Brass Disc #22445 in NE. face of Light Pole.
- S. 10° E. 116.53' Set P.K. Nail & Brass Disc #22445 in top of Guard Rail Post.
- S. 15° W. 84.37' Set P.K. Nail & Brass Disc #22445 in top of Guard Rail Post.
- N. 40° W. 32.93' Set P.K. Nail & Brass Disc #22445 in NE. face of 6" Poplar.
- N. 01° W. 74.51' Found Iron Rod.



Signed by [Signature]
Surveyor's Michigan License No. 22445

Date December 27, 1994

93-1010



*900
200
file*