

MAY 16 1996

LIBER 15913 PG 770

COMMISSION

LAND CORNER RECORDATION CERTIFICATE 9.00 MISCELLANEOUS RECORDING
Filing Requirement of Act 74, Mich. P.A. 1970 2.00 REMONUMENTATION

93-1010
For corners in

Oakland
(County)

Located In: Oakland Corner Code #

29 DEC 95 9:04 A.M. RECEIPT# 45A
PAID RECORDED - OAKLAND COUNTY
LYNN D. ALLEN, CLERK/REGISTER OF DEEDS

Compliance with
ACT 345, P.A. 1990

APPROVED ON: 11-27-95 TS
OAKLAND COUNTY REMONUMENTATION
PEER GROUP COMMITTEE

Register of Deeds Stamp & File Number

- 1. Public Land Survey T 4N R 11E C-7
T _____ R _____
T _____ R _____
T _____ R _____
- 2. Property Controlling in Section S _____ T _____ R _____
S _____ T _____ R _____
- 3. Miscellaneous Property in Sec. S _____ T _____ R _____
S _____ T _____ R _____

- 4. Lot No. _____, Recorded Plat _____
- 5. Private Claims _____

I, Grant J. Ward, RLS, in a field survey on December 22, 19 94, do hereby certify that under requirements of P.A. 74, Michigan P.A. of 1970, the corner points mentioned in lines 1 and 2 above were in conformance with regulations and rules therefore as required in the current manual of survey instructions of the United States Department of the Interior, Bureau of Land Management or by a decree of a Court of Law and/or that the corner points mentioned in lines 3, 4 and 5 above were in conformance with the rules of the Michigan Board of Land Surveyors or by a Decree of a Court of Law; established, re-established, monumented, re-monumented, recovered, found as expressed below.

NOTE: Not more than 4 corners, all in the same town and range, may be recorded on this certificate.

A. Description of original monument and accessories and/or subsequent restoration:

C-7 Post, per G.L.O. Notes.

B. Description of corner evidence found and/or method applied in restoring or reestablishing corner:

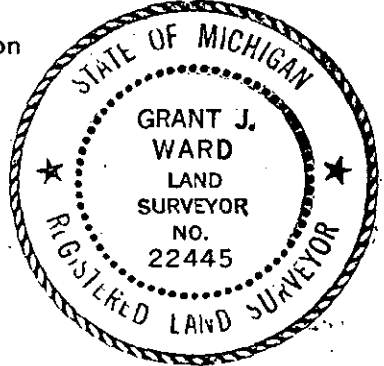
C-7 Corner common to Sec. 17, 18, 19 and 20, T. 4 N., R. 11 E. Found P.K. Nail in the Centerline of Buell Road and 5' +/- West of the Centerline of Adams Road. This corner location is accepted as the best available evidence of the position of the corner.

Previously Unrecorded in Oakland County Records.

C. Description of monument for corner and accessories established to perpetuate locating the position of the corner:

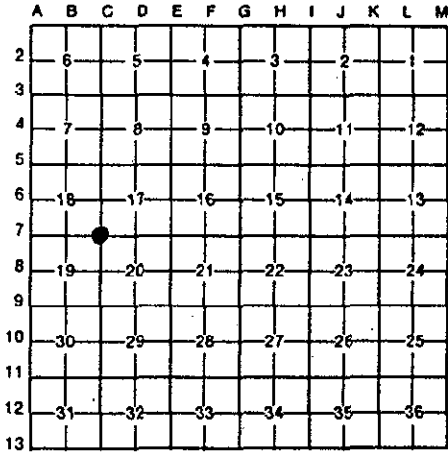
C-7 Corner common to Sec. 17, 18, 19 and 20, T. 4 N., R. 11 E. Set 5/8" Iron Rod and Brass Cap #22445 in Monument Box.

- N. 39° E. 33.63' Set P.K. Nail & Brass Disc #22445 in S. face of Utility Pole.
- S. 80° E. 61.81' Set P.K. Nail & Brass Disc #22445 in NE. face of 24" Walnut.
- S. 48° E. 77.78' Set P.K. Nail & Brass Disc #22445 in NE. face of 6" Elm.
- N. 79° W. 43.83' Set P.K. Nail & Brass Disc #22445 in S. face of 12" Elm.
- N. 52° E. 6.17' Found P.K. Nail.



Signed by [Signature] Date December 27, 1994
Surveyor's Michigan License No. 22445

DEC 29 1995 2 59 07 8



960
200
25

DECEMBER 24, 1994

Corner Code: C-7

DOSSIER FOR: THE SOUTHWEST CORNER OF SECTION 17, OAKLAND TOWNSHIP, T 4 N, R 11 E, OAKLAND COUNTY, MICHIGAN. Prepared under contract with the County of Oakland Under Act 345 of the Public Acts of 1990.

HISTORY:

This Township was originally surveyed by Joseph Wampler, Deputy Surveyor, in 1817.

SPECIAL NOTES:

After reviewing the Original GLO Notes and the transcripts, I do not believe that the original survey lines were run as documented, at least in order. Inconsistencies are evidenced by the sequence of page numbers, missing pages and inserted pages from other books in the original notebook. I expect that some lines were not measured or measured in the opposite directions indicated and that a tally (330 feet) was dropped in the fourth mile from the South line of the Township. This helps to explain large discrepancies between the GLO dimensions and what we are measuring today between Corners and noted features.

This Corner has been accepted and used since before 1950, as evidenced by the recording of the Subdivision "Adams Road Estates".

COLLATERAL EVIDENCE:

This Corner lies 5 feet West of the intersection of the Centerlines of Buell Road and Lake George Road.

We set this Corner based on monuments found along Adams Road from "Adams Road Estates" and "Green Brook Hills" Subdivisions.

We searched at least 50 feet in each direction for other stakes and found a P.K. Nail N. $51^{\circ} 51' 32''$ E. 6.17 feet from this Corner.

The measured dimensions to the North 1/4 Corner and the West 1/4 Corner of Section 20 and the West 1/4 Corner of Section 17 agree with dimensions taken from recorded surveys, the most recent tax maps and/or other old surveys within 2 feet, 2 feet and 1 foot respectively.

The P.K. Nail was recorded initially in 1977 by Huston K. Kennedy, Surveyor, in Liber 7067, Page 313, of the Oakland County Records. However, it is my opinion that it should be rejected as the proper Corner location.

SURVEYOR'S RECOMMENDATIONS:

Therefore, I recommend that the Peer Review Group accept this Corner as monumented, with the references as shown on the enclosed form prepared according to Act 74 of the Public Acts of 1970, while considering the P.K. Nail found in the vicinity.

Grant J. Ward, R.L.S.
License No. 22445

771