

SURVEY & REMONUMENTATION

JAN 20 95 011213

LIBER 15213 Pg 017

MAY - 1 1995

LAND CORNER RECORDATION CERTIFICATE

OK - T. SMITH

Filing Requirement of Act 74, Mich. P.A. 1970

\$ 9.00 MISCELLANEOUS RECORDING

\$ 2.00 REMONUMENTATION

20 JAN 95 7:41 A.M. RECEIPT# 10B
PAID RECORDED - OAKLAND COUNTY
LYNN D. ALLEN, CLERK/REGISTER OF DEEDS

Compliance with ACT 345, P.A. 1990

APPROVED ON: 12-28-94
OAKLAND COUNTY REMONUMENTATION
PEER GROUP COMMITTEE
Register of Deeds Stamp & File Number

93-1010

For corners in

COMMISSION

Oakland

(County)

Located In: Oakland Corner Code #

1. Public Land Survey	T	4N	R	11E	C-9
	T		R		
	T		R		
	T		R		
2. Property Controlling in Section	S		T	R	
	S		T	R	
3. Miscellaneous Property in Sec.	S		T	R	
	S		T	R	

4. Lot No. _____, Recorded Plat _____
5. Private Claims _____

I, Grant J. Ward, RLS, in a field survey on February 22, 1994, do hereby certify that under requirements of P.A. 74, Michigan P.A. of 1970, the corner points mentioned in lines 1 and 2 above were in conformance with regulations and rules therefore as required in the current manual of survey instructions of the United States Department of the Interior, Bureau of Land Management or by a decree of a Court of Law and/or that the corner points mentioned in lines 3, 4 and 5 above were in conformance with the rules of the Michigan Board of Land Surveyors or by a Decree of a Court of Law; established, re-established, monumented, re-monumented, recovered, found as expressed below:

NOTE: Not more than 4 corners, all in the same town and range, may be recorded on this certificate.

A. Description of original monument and accessories and/or subsequent restoration:

C-9 Post, per G.L.O. Notes.

B. Description of corner evidence found and/or method applied in restoring or reestablishing corner:

C-9 Corner common to Sec. 19, 20, 29 and 30, T. 4 N., R. 11 E. Found 3" Disc "Oakland County Road Commission" with Punch Mark, in Monument Box, 0.25' below Road surface, 0.55' East of the Centerline of Adams Road and 3' South of the Centerline of Gunn Road. This corner location is a careful and faithful perpetuation of the position of the original corner.

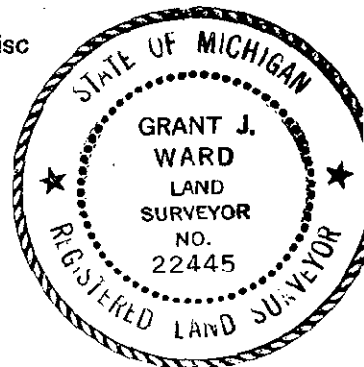
Previously Recorded in L. 9778, P. 649 (2); L. 11751 P. 003 (3); and L. 135900, P. 154 (1) of Oakland County Records.

(n) Indicates the number of references that confirms this corner by dimensional tie.

C. Description of monument for corner and accessories established to perpetuate locating the position of the corner:

C-9 Corner common to Sec. 19, 20, 29 and 30, T. 4 N., R. 11 E. Found 3" Disc "Oakland County Road Commission" with Punch Mark, in Monument Box.

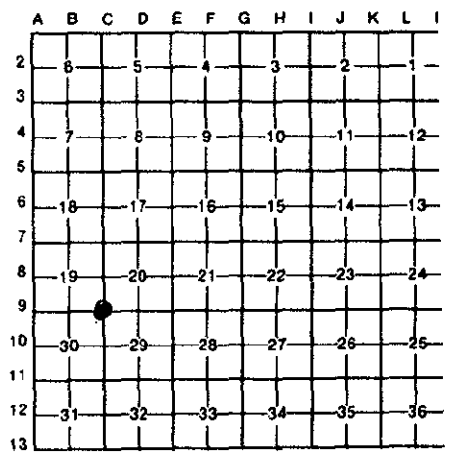
- N. 50° E. 60.77' Set P.K. Nail & Brass Disc #22445 in NW. face of Utility Pole.
- S. 52° E. 68.40' Set P.K. Nail & Brass Disc #22445 in NE. face of 14" Cedar.
- S. 80° W. 111.65' Set P.K. Nail & Brass Disc #22445 in N. face of 20" Ash.
- N. 43° W. 52.34' Centerline of 2 1/2" steel Street Sign Pole.



Signed by [Signature]
Surveyor's Michigan License No. 22445

Date December 27, 1994

93-1010



Handwritten notes:
700
700