

MAY - 1 1995

LAND CORNER RECORDATION CERTIFICATE
COMMISSION Filing Requirement of Act 74, Mich. P.A. 1970

OK - T. SMITH

93-1010
For corners in
Oakland
(County)

Located In: Oakland Corner Code #7

\$ 9.00 MISCELLANEOUS RECORDING
\$ 2.00 REMONUMENTATION
20 JAN 95 7:44 A.M. RECEIPT# 10B
PAID RECORDED - OAKLAND COUNTY
LYNN D. ALLEN, CLERK/REGISTER OF DEEDS

Compliance with
ACT 345, P.A. 1990

APPROVED ON: 2-9-94
OAKLAND COUNTY REMONUMENTATION
PEER GROUP COMMITTEE
Register of Deeds Stamp & File Number

- 1. Public Land Survey T 4N R 11E E-7
- T _____ R _____
- T _____ R _____
- T _____ R _____
- 2. Property Controlling S _____ T _____ R _____
- in Section S _____ T _____ R _____
- 3. Miscellaneous S _____ T _____ R _____
- Property in Sec. S _____ T _____ R _____

- 4. Lot No. _____, Recorded Plat _____
- 5. Private Claims _____

I, Grant J. Ward, RLS, in a field survey on December 17, 19 93, do hereby certify that under requirements of P.A. 74, Michigan P.A. of 1970, the corner points mentioned in lines 1 and 2 above were in conformance with regulations and rules therefore as required in the current manual of survey instructions of the United States Department of the Interior, Bureau of Land Management or by a decree of a Court of Law and/or that the corner points mentioned in lines 3, 4 and 5 above were in conformance with the rules of the Michigan Board of Land Surveyors or by a Decree of a Court of Law; established, re-established, monumented, re-monumented, recovered, found as expressed below:

NOTE: Not more than 4 corners, all in the same town and range, may be recorded on this certificate.

A. Description of original monument and accessories and/or subsequent restoration:

E-7 Post, per G.L.O. Notes.

B. Description of corner evidence found and/or method applied in restoring or reestablishing corner:

E-7 Corner common to Sec. 16, 17, 20 and 21, T. 4 N., R. 11 E. Found 1/2" Iron Rod, 1.15' below Road surface, in the Centerline of Buell Road and Lake George Road. This corner location is a careful and faithful perpetuation of the position of the original corner.

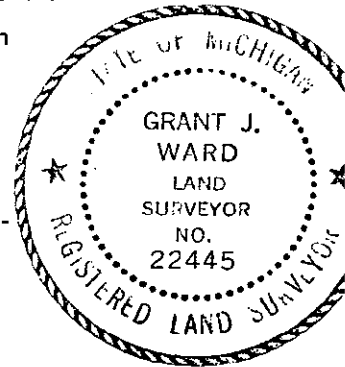
Previously Recorded in L. 59027, P. 278 (3); L. 5921, P. 407 (3); L. 6310, P. 136 (3); L. 7177, P. 602 (2); L. 8599, P. 133 (3) and L. 11861, P. 023 (3) of Oakland County Records.

(n) Indicates the number of references that confirms this corner by dimensional tie.

C. Description of monument for corner and accessories established to perpetuate locating the position of the corner:

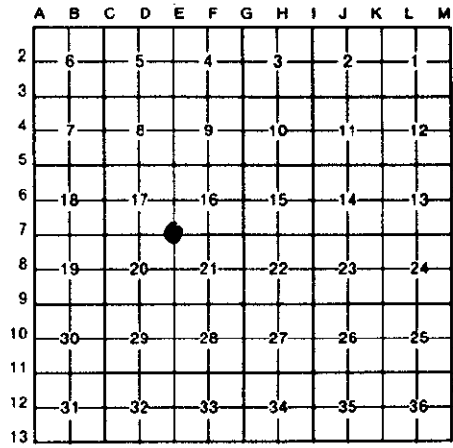
E-7 Corner common to Sec. 16, 17, 20 and 21, T. 4 N., R. 11 E. Set 5/8" Iron Rod and Brass Cap #22445 adjoining Found Iron Rod.

- S. 34° E. 61.92' Set P.K. Nail & Brass Disc #22445 in SW. face of Utility Pole.
- S. 35° W. 53.21' Set P.K. Nail & Brass Disc #22445 in E. face of 20" Maple.
- N. 54° W. 34.71' Set P.K. Nail & Brass Disc #22445 in S. face of 18" Oak.
- N. 36° E. 44.53' Set P.K. Nail & Brass Disc #22445 in W. face of twin 16" Walnut.



Signed by [Signature]
Surveyor's Michigan License No. 22445

Date December 15, 1994



[Handwritten signature]