

SURVEY & REMONUMENTATION

LIBR 15213 PG. 063

JAN 20 95 011236

OK - T. SMITH

93-1010
For corners in
Oakland
(County)

MAY - 1 1995 **LAND CORNER RECORDATION CERTIFICATE**
Filing Requirement of Act 74, Mich. P.A. 1970
COMMISSION

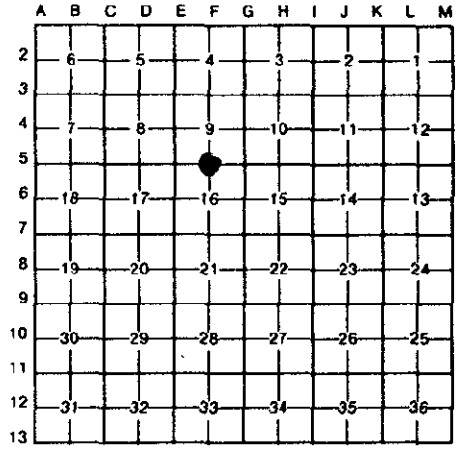
Located In: Oakland Corner Code #

\$ 9.00 MISCELLANEOUS RECORDING
\$ 2.00 REMONUMENTATION
20 JAN 95 7:47 A.M. RECEIPT# 11B
PAID RECORDED - OAKLAND COUNTY
LYNN D. ALLEN, CLERK/REGISTER OF DEEDS

Compliance with
ACT 345, P.A. 1990

APPROVED ON: 2-9-94
OAKLAND COUNTY REMONUMENTATION
PEER GROUP COMMITTEE
Register of Deeds Stamp & File Number

- | | | | | | |
|------------------------------------|---|------------|---|-------------|-----|
| 1. Public Land Survey | T | <u>4</u> N | R | <u>11</u> E | F-5 |
| | T | | R | | |
| | T | | R | | |
| | T | | R | | |
| 2. Property Controlling in Section | S | | T | | R |
| | S | | T | | R |
| 3. Miscellaneous Property in Sec. | S | | T | | R |
| | S | | T | | R |
4. Lot No. _____, Recorded Plat _____
5. Private Claims _____



I, Grant J. Ward, RLS, in a field survey on December 17, 19 93, do hereby certify that under requirements of P.A. 74, Michigan P.A. of 1970, the corner points mentioned in lines 1 and 2 above were in conformance with regulations and rules therefore as required in the current manual of survey instructions of the United States Department of the Interior, Bureau of Land Management or by a decree of a Court of Law and/or that the corner points mentioned in lines 3, 4 and 5 above were in conformance with the rules of the Michigan Board of Land Surveyors or by a Decree of a Court of Law; established, re-established, monumented, re-monumented, recovered, found as expressed below:

NOTE: Not more than 4 corners, all in the same town and range, may be recorded on this certificate.

A. Description of original monument and accessories and/or subsequent restoration:

F-5 Post, per G.L.O. Notes.

[Handwritten signature]

B. Description of corner evidence found and/or method applied in restoring or reestablishing corner:

F-5 Corner common to Sec. 9 and 16, T. 4 N., R. 11 E. Found 1/2" Iron Rod in Monument Box 1' South of the Centerline of Stoney Creek Road, 0.2' below the Road surface. This corner location, although not established by an original government survey, is accepted as the best available evidence of the position of the corner.

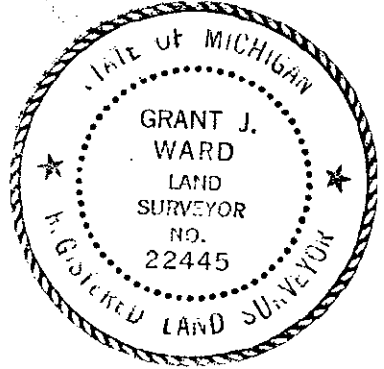
Previously Recorded in L. 5805, P. 258 (2); and L. 10434, P. 806 (4) of Oakland County Records.

(n) Indicates the number of references that confirms this corner by dimensional tie.

C. Description of monument for corner and accessories established to perpetuate locating the position of the corner:

F-5 Corner common to Sec. 9 and 16, T. 4 N., R. 11 E. Set Iron Rod and Brass Cap #22445 in Existing Monument Box.

- S. 81° W. 67.34' Set P.K. Nail & Brass Disc #22445 in N. face of 12" Ash.
- N. 24° W. 51.43' Set P.K. Nail & Brass Disc #22445 in SW. face of 6" Poplar.
- N. 45° E. 55.55' Set P.K. Nail & Brass Disc #22445 in SE. face of 8" Ash.
- S. 36° E. 42.99' Set P.K. Nail & Brass Disc #22445 in NE. face of 14" Ash.



Signed by [Handwritten Signature]

Date December 15, 1994

Surveyor's Michigan License No. 22445

93-1010