

SURVEY & REMONUMENTATION

JAN 20 95 011248

MAY - 1 1995

LIC# 15213 PC 087

LAND CORNER RECORDATION CERTIFICATE

OK - T. SMITH

93-1010
For corners in

COMMISSION Filing Requirement of Act 74, Mich. P.A. 1970

9.00 MISCELLANEOUS RECORDING

\$ 2.00 REMONUMENTATION
20 JAN 95 8:06 A.M. RECEIPT# 12B
PAID RECORDED - OAKLAND COUNTY
LYNN D. ALLEN, CLERK/REGISTER OF DEEDS

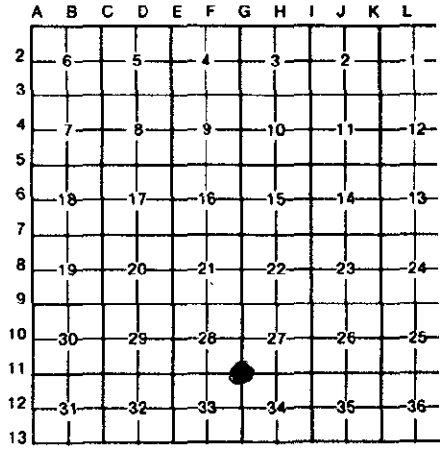
Compliance with
ACT 345, P.A. 1990

APPROVED ON: 12-07-94
OAKLAND COUNTY REMONUMENTATION
PEER GROUP COMMITTEE
Register of Deeds Stamp & File Number

| | |
|---|--|
| <u>Oakland</u> <small>(County)</small> | Located In: <u>Oakland</u> Corner Code # <u> </u> |
| 1. Public Land Survey | T <u>4N</u> R <u>11E</u> <u>G-11</u> |
| | T <u> </u> R <u> </u> |
| | T <u> </u> R <u> </u> |
| | T <u> </u> R <u> </u> |
| 2. Property Controlling in Section | S <u> </u> T <u> </u> R <u> </u> |
| | S <u> </u> T <u> </u> R <u> </u> |
| 3. Miscellaneous Property in Sec. | S <u> </u> T <u> </u> R <u> </u> |
| | S <u> </u> T <u> </u> R <u> </u> |

4. Lot No. , Recorded Plat
5. Private Claims

I, Grant J. Ward, RLS in a field survey on November 17, 1994, do hereby certify that under requirements of P.A. 74, Michigan P.A. of 1970, the corner points mentioned in lines 1 and 2 above were in conformance with regulations and rules therefore as required in the current manual of survey instructions of the United States Department of the Interior, Bureau of Land Management or by a decree of a Court of Law and/or that the corner points mentioned in lines 3, 4 and 5 above were in conformance with the rules of the Michigan Board of Land Surveyors or by a Decree of a Court of Law; established, re-established, monumented, re-monumented, recovered, found as expressed below:



NOTE: Not more than 4 corners, all in the same town and range, may be recorded on this certificate.

A. Description of original monument and accessories and/or subsequent restoration:

G-11 Post, per G.L.O. Notes.

B. Description of corner evidence found and/or method applied in restoring or reestablishing corner:

G-11 Corner common to Sec. 27, 28, 33 and 34, T. 4 N., R. 11 E. Found Monument 20' North of the Centerline of Silverbell Road and 44' West of the Centerline of Orion Road, 0.5' above ground. This corner location is a careful and faithful perpetuation of the position of the original corner.

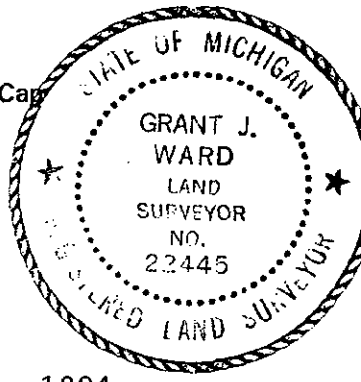
Previously Recorded in L. 6165, P. 157 (0); L. 6196, P. 446 (0); L. 6216, P. 530 (0); L. 7503, P. 810 (5); L. 9134 P. 422 (0); L. 10204, P. 786 (3); L. 10377, P. 369 (4); and L. 10990, P. 008 (4) of Oakland County Records.

(n) Indicates the number of references that confirms this corner by dimensional tie.

C. Description of monument for corner and accessories established to perpetuate locating the position of the corner:

G-11 Corner common to Sec. 27, 28, 33 and 34, T. 4 N., R. 11 E. Set Brass Cap #22445 on existing Monument.

- Due North 2.31' Set P.K. Nail & Brass Disc #22445 in E. face of Utility Pole.
- N. 85° E. 99.00' Set P.K. Nail & Brass Disc #22445 in S. face of 18" Walnut.
- S. 85° E. 82.38' Set P.K. Nail & Brass Disc #22445 in N. face of fence post.
- S. 15° E. 61.98' Set P.K. Nail & Brass Disc #22445 in NW. face of 8" Pine.



Signed by [Signature]
Surveyor's Michigan License No. 22445

Date November 28, 1994