

LAND CORNER RECORDATION CERTIFICATE
Filing Requirement of Act 74, Mich. P.A. 1970

1959

For corners in

Oakland Located In: Corner Code #
(county)

Holly Township

1. Public Land Survey T 5N R 7E G-9
T R
T R
T R

2. Property Controlling S T SURVEY &
in Section S T REMONUMENTATION

3. Miscellaneous S T
Property In Sec. S T MAR 21 2000

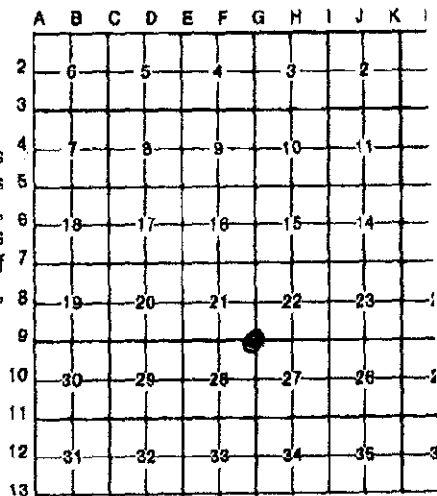
LIBER 20945 PAGE 554
\$7.00 MISC RECORDING
\$2.00 REMONUMENTATION
01/04/2000 07:37:46 A.M. RECEIPT# 342
PAID RECORDED - OAKLAND COUNTY
G. WILLIAM CADDELL, CLERK/REGISTER OF DEED

10-28-98 JS
Register of Deeds Stamp & File Number

4. Lot No. _____, Recorded Plat _____ SECTION _____

5. Private Claims _____

I, James E. Kovas, in a field survey on July 16, 1998, do hereby certify that under requirements of P.A. 74, Michigan P.A. of 1970, the corner points mentioned in lines 1 and 2 above were in conformance with regulations and rules therefore as required in the current manual of survey instructions of the United States Department of the Interior, Bureau of Land Management or by a decree of a Court of Law and/or that the corner points mentioned in lines 3, 4 and 5 above were in conformance with the rules of the Michigan Board of Land Surveyors or by a Decree of a Court of Law; established, re-established, monumented, re-monumented, recovered, found as expressed below:



NOTE: Not more than 4 corners, all in the same town and range, may be recorded on this certificate.

A. Description of original monument and accessories and/or subsequent restoration:

- G-9
- 1816 - G.L.O., Alex Holmes, D.S., set post
- 1958 - County Road Commission (section corner ties) spike and cap
- 1979 - James Buckerfield #10868 (LCRC Liber 7700, Page 753) found 1/2" iron in monument box
- 1989 - Lloyd McGinnis #18999 (Survey Liber 11256, Page 769) found 5/8" iron in monument box

- Distances:
- G-9 to F-9 = 2645.61' (Wade-Trim, 1998)
 - G-9 to F-9 = 2645.27' (Newman, 1994)
 - G-9 to H-9 = 2607.06' (Wade-Trim, 1999)
 - G-9 to G-8 = 2643.65' (Wade-Trim, 1998)
 - G-9 to G-8 = 2643.75' (McGinnis, 1989)
 - G-9 to G-8 = 2643.59' (Phillips, 1988)
 - G-9 to G-8 = 2643.59' (Newman, 1985)
 - G-9 to G-10 = 2649.88' (Newman, 1992)

B. Description of corner evidence found and/or method applied in restoring or reestablishing corner:

G-9 Found 1/2" iron in monument box.

WITNESSES FOUND:

N 60 W	56.41'	to nail in 12" Maple	found	56.40'
N 45 E	63.74'	to nail in tag in 12" Elm	found	63.90'
N 45 W	55.88'	to nail in tag in 18" Maple	found	56.40'
NW	55.90'	to 12" tree (different nail)	found	56.40'
SW	44.65'	to center of fire hydrant	found	44.65'
NE	63.40'	to 12" tree	found	63.90'

C. Description of monument for corner and accessories established to perpetuate locating the position of the corner:

G-9 Found 1/2" iron in monument box. Set cap #33138.

WIT:

- N 45 E 63.86' Set P.K./tag #33138 SE face 14" Elm
- N 42 W 83.51' Set P.K./tag #33138 East face 16" Maple
- S 58 W 60.30' Set P.K./tag #33138 NW face light pole
- S 60 E 103.55' Set P.K./tag #33138 North face 30" Poplar
- S 80 W 46.35' Set mag nail w/tag #33138 14" Box Elder

Signed by James E. Kovas

Date 12/22/99

Surveyor's Michigan License No. 33138

