

LAND CORNER RECORDATION CERTIFICATE  
Filing Requirement of Act 74, Mich. P.A. 1970

1978

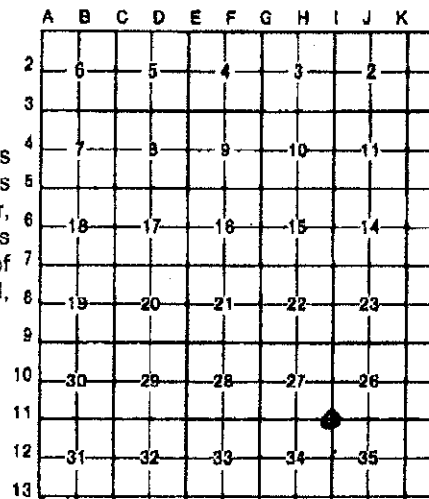
For corners in

LIBER 20945 PAGE 573  
\$7.00 MISC RECORDING  
\$2.00 RE-MONUMENTATION  
01/04/2000 07:37:46 A.M. RECEIPT# 342  
PAID RECORDED - OAKLAND COUNTY  
G. WILLIAM CADDELL, CLERK/REGISTER OF DEEDS

Oakland Located In: Holly Township Corner Code #  
(county)  
1. Public Land Survey T 5N R 7E I-11  
T R  
T R  
T R  
2. Property Controlling S T R SURVEY & RE-MONUMENTATION  
in Section S T R  
3. Miscellaneous S T R  
Property in Sec. S T R MAR 21 2000

RECORDED  
OCT 11 P.M. 1999  
MOVED ON: 1-5-99 JS  
OAKLAND COUNTY RE-MONUMENTATION  
REGISTER OF DEEDS STAMP & FILE NUMBER

4. Lot No. \_\_\_\_\_, Recorded Plat \_\_\_\_\_ SECTION  
5. Private Claims \_\_\_\_\_



I, James E. Kovas, in a field survey on September 9, 1998, do hereby certify that under requirements of P.A. 74, Michigan P.A. of 1970, the corner points mentioned in lines 1 and 2 above were in conformance with regulations and rules therefore as required in the current manual of survey instructions of the United States Department of the Interior, Bureau of Land Management or by a decree of a Court of Law and/or that the corner points mentioned in lines 3, 4 and 5 above were in conformance with the rules of the Michigan Board of Land Surveyors or by a Decree of a Court of Law; established, re-established, monumented, re-monumented, recovered, found as expressed below:

NOTE: Not more than 4 corners, all in the same town and range, may be recorded on this certificate.

A. Description of original monument and accessories and/or subsequent restoration:

- I-11
- 1816 - G.L.O., Alex Holmes, D.S., set post
- 1978 - Dan Williams #25880 (LCRC Liber 7466, Page 142) found 3/8" rerod
- 1979 - John Albright #10057 (LCRC Liber 7455, Page 864) found 1/2" rerod

Distances: I-10 to I-11 = 2634.33' (Wade-Trim, 1998)

I-11 to I-12 = 2641.37' (Wade-Trim, 1998)

I-11 to J-11 = 2656.02' (Wade-Trim, 1998)

I-11 to J-11 = 2656.73' (Newman, 1990)

B. Description of corner evidence found and/or method applied in restoring or reestablishing corner:

I-11 Found 1/2" rerod.

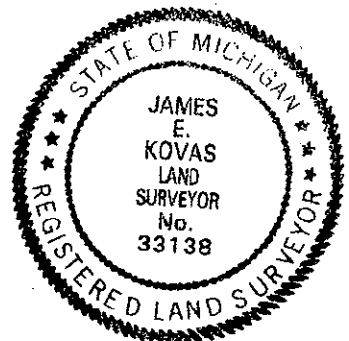
WITNESSES FOUND:

North 32.81' to power pole found 32.90'  
S 50 E 41.67' to power pole found 40.75'  
West 9.90' to 24" Oak found 9.93'

C. Description of monument for corner and accessories established to perpetuate locating the position of the corner:

I-11 Found 1/2" rerod. Set concrete monument and cap #33138.

WIT: North 32.90' Power pole w/tag #33138  
S 50 E 41.75' Power pole w/tag #33138  
S 36 W 33.32' Set nail w/tag #33138 8" Oak East face  
West 9.93' Set nail w/tag #33138 26" Oak North face



Signed by James Kovas

Date 12/22/99

Surveyor's Michigan License No. 33138