

LAND CORNER RECORDATION CERTIFICATE APPROVED ON: 9-7-94 OAKLAND COUNTY REMONUMENTATION PEER GROUP COMMITTEE Filing Requirement of Act 74, Mich. P.A. 1970

For corners in

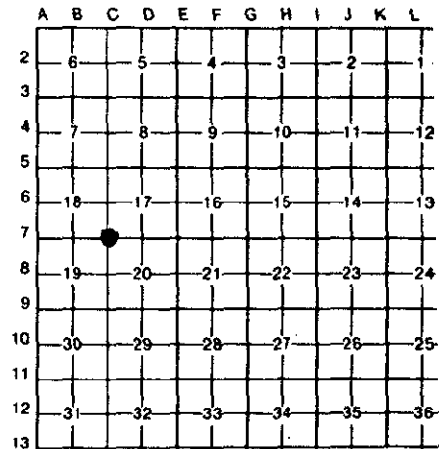
Table with columns: Oakland (County), Located In: Oxford Twp., Corner Code #, and survey details (Public Land Survey, Property Controlling, etc.)

\$ 7.00 MISCELLANEOUS RECORDING \$ 2.00 REMONUMENTATION 25 OCT 94 8:33 A.M. RECEIPT# 44B PAID RECORDED - OAKLAND COUNTY LYNN D. ALLEN, CLERK/REGISTER OF DEEDS

OK - T. SMITH

Register of Deeds Stamp & File Number

I, Huston K. Kennedy, in a field survey on August 1, 1994, do hereby certify that under requirements of P.A. 74, Michigan P.A. of 1970, the corner points mentioned in lines 1 and 2 above were in conformance with regulations and rules...



NOTE: Not more than 4 corners, all in the same town and range, may be recorded on this certificate.

A. Description of original monument and accessories and/or subsequent restoration:

- 1817-GLO Wampler, D.S.; Set Post; 36" White Oak S41\*W 27 Links; 6" Lynn N45\*W 10 Links
1.) 1979-Kennedy, P.S. #17623; LCRC L.7417, Pg.488 - Fnd 1/2" Iron Rod
2.) 1979-Kennedy, P.S. #17623; LCRC L.7524, Pg.757 - Fnd 1/2" Iron Rod, used same wit as 1979 LCRC
3.) 1985-Kennedy, P.S. #17623; LCRC L.9000, Pg.574 - Fnd 1/2" Iron Rod
4.) 1986-Kennedy, P.S. #17623; LCRC L.9521, Pg.82 - Set 1/2" Iron Rod from witnesses
5.) 1972-Kennedy, P.S. #17623; Survey L.5904, Pg.35-37 - Fnd
6.) 1965 Kieft Engineering; Unrecorded Notes - Fnd 1/2" Iron Rod
7.) 1977-Kennedy, P.S. #17623; Unrecorded Survey - Fnd 1/2" Iron Rod
8.) 1979-Kennedy, P.S. #17623; Unrecorded Survey - Fnd 1/2" Iron Rod
9.) 1979-Kennedy, P.S. #17623; Unrecorded Survey - Fnd 1/2" Iron Rod

B. Description of corner evidence found and/or method applied in restoring or reestablishing corner:

1994 Kennedy Surveying, Inc. - Kennedy, P.S. #17623 - Fnd 1/2" Iron rod that is located 5" under the road surface and in the center of Coats Road, and 3' North of the center of Grnager Road to the East, and 30' South of the center of Granjer Road to the West. Both are gravel roads.

Witnesses from LCRC #3 & 4 were used to recover and verify the location of the found 1/2" Iron Rod.

I accepted the found 1/2" Iron Rod as the best evidence of the original corner position.

C. Description of monument for corner and accessories established to perpetuate locating the position of the corner:

- C-7 I replaced the found 1/2" Iron Rod with a 5/8" x 24" Iron Rod w/2" diameter brass cap stamped Oakland County Remonumentation, PS, #17623.
N21°W 96.75' Set PK & Remon. Washer East face 21" Oak
N46°E 53.83' Set PK & Remon. Washer NW face 26" Ash
S38°W 58.01' Set PK & Remon. Washer SE face Power Pole
S44°E 82.17' Set PK & Remon. Washer NE face Power Pole

The selected location is accepted by me and is generally accepted by Professional Surveyors as the best available evidence of the position of the original corner.



Signed by [Signature] Surveyor's Michigan License No. 17623

Date September 1, 1994