

LAND CORNER RECORDATION CERTIFICATE
Filing Requirement of Act 74, Mich. P.A. 1970

OK - T. SMITH

For corners in

Oakland

(County)

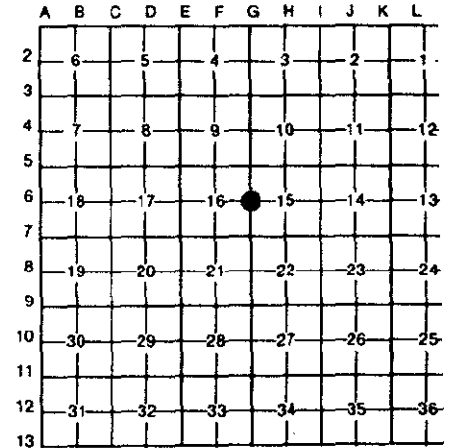
Located In: Oxford Twp Corner Code #

- 1. Public Land Survey T 5N R 10E G-6
2. Property Controlling in Section S T R
3. Miscellaneous Property in Sec. S T R

\$ 7.00 MISCELLANEOUS RECORDING
\$ 2.00 REMONUMENTATION
24 OCT 94 8:51 A.M. RECEIPT# 33B
PAID Com RECORDED OAKLAND COUNTY
LYNN D. ALLEN, CLERK/REGISTER OF DEEDS
APPROVED ON: 27-94
OAKLAND COUNTY REMONUMENTATION
PEER GROUP COMMITTEE
Register of Deeds Stamp & File Number

- 4. Lot No. Recorded Plat
5. Private Claims

I, Huston K. Kennedy, in a field survey on August 1, 1994, do hereby certify that under requirements of P.A. 74, Michigan P.A. of 1970, the corner points mentioned in lines 1 and 2 above were in conformance with regulations and rules therefore as required in the current manual of survey instructions of the United States Department of the Interior, Bureau of Land Management or by a decree of a Court of Law and/or that the corner points mentioned in lines 3, 4 and 5 above were in conformance with the rules of the Michigan Board of Land Surveyors or by a Decree of a Court of Law; established, re-established, monumented, re-monumented, recovered, found as expressed below:



NOTE: Not more than 4 corners, all in the same town and range, may be recorded on this certificate.

A. Description of original monument and accessories and/or subsequent restoration:

- 1818-GLO Wampler, D.S.; Set Post 12" White Oak N43*W 32 Links; 3" White Oak S34*E 20 Links
1.) 1979-Buckerfield, P.S. #10868; LCRC L.7508, Pg.677 - Fnd 3/4" Pipe
2.) 1989-Buckerfield, P.S. #10868; LCRC L.11138, Pg.759 - Fnd 1 1/4" O.D. Pipe

7.00
2.00
file

B. Description of corner evidence found and/or method applied in restoring or reestablishing corner:

1994 Kennedy Surveying, Inc. - Kennedy, P.S. #17623 - Fnd 1" Iron Pipe 4" above ground surface and 142' East of the East edge of the North bound lane of M-24 Highway (Lapeer Road).

Witnesses from LCRC #1 & 2 were used to recover and verify the location of the found 1" Iron Pipe.

I accepted the found 1" Iron Pipe as the best evidence of the original corner position.

C. Description of monument for corner and accessories established to perpetuate locating the position of the corner:

- G-6 I replaced the found 1" Iron Pipe with 1/2" Iron Rod encased in a 4" diameter concrete cylinder 36" long w/2" diameter brass cap stamped Oakland County Remonumentation, P.S. #17623.
S03°W 49.34' "X" in Rock
S32°E 97.07' Set PK & Remon. Washer SW face 16" Elm
N77°E 44.41' Set PK & Remon. Washer NW face 4" Elm

The selected location is accepted by me and is generally accepted by Professional Surveyors as the position of the original corner.



Signed by [Signature]
Surveyor's Michigan License No. 17623

Date September 8, 1994