

LIBER 15232 PG 615

FEB 19 50 19259

LAND CORNER RECORDATION CERTIFICATE

OK - T. SMITH

Filing Requirement of Act 74, Mich. P.A. 1970 7.00 MISCELLANEOUS RECORDING

For corners in

Oakland (County)

Located In: Oxford Twp.

Corner Code #

\$ 2.00 REMONUMENTATION

1 FEB 95 8:53 A.M. RECEIPT# 98  
PAID RECORDED - OAKLAND COUNTY  
LYNN D. ALLEN, CLERK/REGISTER OF DEEDS

Compliance with ACT 345, P.A. 1990

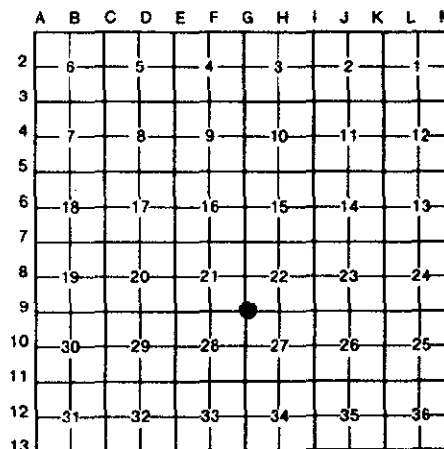
APPROVED ON: 12-27-94  
OAKLAND COUNTY REMONUMENTATION  
PEER GROUP COMMITTEE  
Register of Deeds Stamp & File Number

- 1. Public Land Survey T 5N R 10E G-9
2. Property Controlling in Section S T R
3. Miscellaneous Property in Sec. S T R

- 4. Lot No. Recorded Plat
5. Private Claims

I, Huston K. Kennedy, in a field survey on December 20, 1994, do hereby certify that under requirements of P.A. 74, Michigan P.A. of 1970, the corner points mentioned in lines 1 and 2 above were in conformance with regulations and rules therefore as required in the current manual of survey instructions of the United States Department of the Interior, Bureau of Land Management or by a decree of a Court of Law and/or that the corner points mentioned in lines 3, 4 and 5 above were in conformance with the rules of the Michigan Board of Land Surveyors or by a Decree of a Court of Law; established, re-established, monumented, re-monumented, recovered, found as expressed below:

NOTE: Not more than 4 corners, all in the same town and range, may be recorded on this certificate.



A. Description of original monument and accessories and/or subsequent restoration:

- 1817-GLO Wampler, D.S.; Set Post 10" Black Oak S66°E 47 Links; 10" Black Oak N61°W 43 Links
1.) 1976-Kennedy, P.S. #17623; LCRC L.6821, Pg.468 - Set P.K. Nail
2.) 1986-Lohff, P.S. #13791; Survey L.9438, Pg.801 - Fnd 1" Iron Pipe
3.) 1986-Lohff, P.S. #13791; Survey L.9438, Pg.803 - Fnd 1" Iron Pipe, used same wit as 1986 Survey
4.) 1986-Lohff, P.S. #13791; Survey L.9438, Pg.805 - Fnd 1" Iron Pipe, used same wit as 1986 Survey
5.) 1986-Lohff, P.S. #13791; Survey L.9438, Pg.807 - Fnd 1" Iron Pipe, used same wit as 1986 Survey
6.) 1986-Lohff, P.S. #13791; Survey L.9438, Pg.809 - Fnd 1" Iron Pipe, used same wit as 1986 Survey

B. Description of corner evidence found and/or method applied in restoring or reestablishing corner:

1994 Kennedy Surveying, Inc. - Kennedy, P.S. #17623 - Fnd P.K. Nail in the centerline of Seymour Lake Road, which has a bituminous surface, with a concrete base to the East and bituminous surface to the West. There is a fence line (the West line of the Cemetery) extending to the South 15.20 feet to the East. There is also a fence line (West line of the Cemetery) extending to the North 35.50 feet West of the corner. I did not accept the found 1" Iron Pipe as shown on surveys recorded in Liber 9438, Pages 801, 803, 805, 807 & 809 of Oakland County Records.

Witnesses from LCRC #1 were used to recover and verify the location of the found P.K. Nail.

I accepted the found P.K. Nail as the best evidence of the original corner position.

FIELD MEASUREMENTS BETWEEN

- G-9 to F-9 2874.10 Ft. (H. Kennedy 1993)
G-9 to H-9 2468.54 Ft. (H. Kennedy 1990)
G-9 to F-9 2874.10 Ft. (Plats)
G-9 to F-9 2874.09 Ft. (Detroit Edison Company 1992)

C. Description of monument for corner and accessories established to perpetuate locating the position of the corner:

- G-9 I replaced the found P.K. Nail with a 5/8" x 24" Iron Rod w/2" diameter brass cap stamped Oakland County Remonumentation, PS #17623 in a new Monument Box.
N58°W 64.83' Set PK & Remon. Washer SW face 27" Oak
S75°W 74.26' Set PK & Remon. Washer NW face Power Pole
N11°E 46.76' Set PK & Remon. Washer West face 38" Oak
S03°E 27.73' Set PK & Remon. Washer East face 40" Oak

The selected location is accepted by me and is generally accepted by Professional Surveyors as the best evidence of the position of the original corner.



Signed by [Signature]
Surveyor's Michigan License No. 17623

Date January 18, 1995