

JAN 20 95 011 190

LIBER 15212 PC 876

LAND CORNER RECORDATION CERTIFICATE  
Filing Requirement of Act 74, Mich. P.A. 1970

OK - T. SMITH

For corners in

Oakland (County) Located In: Oxford Twp. Corner Code #H-5

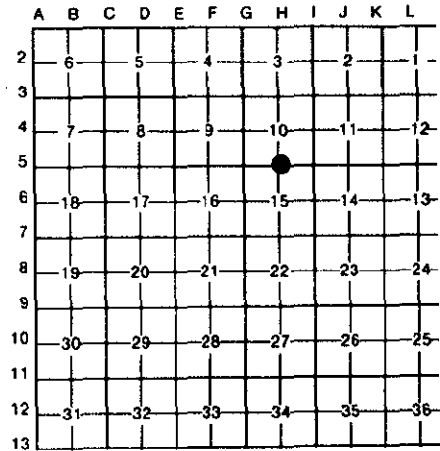
1. Public Land Survey	T 5N	R 10E	H-5
	T	R	
	T	R	
	T	R	
2. Property Controlling in Section	S	T	R
	S	T	R
3. Miscellaneous Property in Sec.	S	T	R
	S	T	R
4. Lot No. _____, Recorded Plat _____			
5. Private Claims _____			

7.00 MISCELLANEOUS RECORDING  
2.00 REMONUMENTATION  
20 JAN 95 7:34 A.M. RECEIPT# 88  
PAID RECORDED - OAKLAND COUNTY  
LYNN D. ALLEN, CLERK/REGISTER OF DEEDS

Compliance with ACT 345, P.A. 1990  
APPROVED ON: 12-14-94  
OAKLAND COUNTY REMONUMENTATION PEER GROUP COMMITTEE

Register of Deeds Stamp & File Number

I, Huston K. Kennedy, in a field survey on August 10, 19 94, do hereby certify that under requirements of P.A. 74, Michigan P.A. of 1970, the corner points mentioned in lines 1 and 2 above were in conformance with regulations and rules therefore as required in the current manual of survey instructions of the United States Department of the Interior, Bureau of Land Management or by a decree of a Court of Law and/or that the corner points mentioned in lines 3, 4 and 5 above were in conformance with the rules of the Michigan Board of Land Surveyors or by a Decree of a Court of Law, established, re-established, monumented, re-monumented, recovered, found as expressed below:



**NOTE: Not more than 4 corners, all in the same town and range, may be recorded on this certificate.**

A. Description of original monument and accessories and/or subsequent restoration:

- 1818-GLO Wampler, D.S.; Set Post; 10" Elm N81°W 37 Links; 6" Aspen S66°E 32 Links
- 1.) 1979-Buckerfield, P.S. #10868; LCRC L.7508, Pg.675 - Fnd 3/8" Pipe
- 2.) 1991-Kennedy, P.S. #17623; Unrecorded Survey - Fnd 3/8" Iron Pipe

B. Description of corner evidence found and/or method applied in restoring or reestablishing corner:

1994 Kennedy Surveying, Inc. - Kennedy, P.S. #17623 - Fnd 3/8" Iron Pipe, no lines of occupation.  
Witnesses from LCRC #1 were used to recover and verify the location of the found  
I accepted the found 3/8" Iron Pipe as the best evidence of the original corner position.

C. Description of monument for corner and accessories established to perpetuate locating the position of the corner:

- H-5 I replaced the found 3/8" Iron Pipe with a 1/2" Iron Rod encased in a 4" diameter concrete cylinder 36" long w/2" diameter brass cap stamped Oakland County Remonumentation, PS #17623.
- N15°W 25.98' Set PK & Remon. Washer West face 27" Oak
- Due East 12.40' Set PK & Remon. Washer South face twin 24" Oaks
- S86°W 8.67' Set PK & Remon. Washer South face 22" clump of Maples
- S05°W 14.26' Set PK & Remon. Washer West face 21" Oak

The selected location is accepted by me and is generally accepted by Professional Surveyors as the best available evidence of the position of the original corner.

Signed by [Signature]  
Surveyor's Michigan License No. 17623

Date December 16, 1994

