

LAND CORNER RECORDATION CERTIFICATE
Filing Requirement of Act 74, Mich. P.A. 1970

OK - T. SMITH

For corners in
Oakland
(County)

Located in: Oxford Twp. Corner Code #

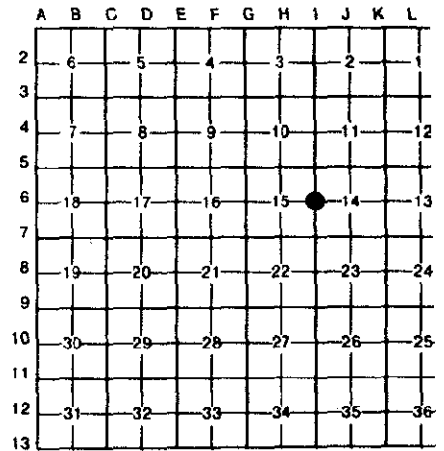
\$ 7.00 MISCELLANEOUS RECORDING
\$ 2.00 REMONUMENTATION
15 NOV 94 8:56 A.M. RECEIPT# 138
PAID RECORDED - OAKLAND COUNTY
LYNN D. ALLEN, CLERK/REGISTER OF DEEDS

Table with 4 columns: Item, T, R, and a blank column. Rows include Public Land Survey, Property Controlling in Section, and Miscellaneous Property in Sec.

Compliance with ACT 345, P.A. 1990
APPROVED ON: 9-7-94
OAKLAND COUNTY REMONUMENTATION
Register of Deeds Stamp & File Number

4. Lot No. Recorded Plat
5. Private Claims

I, Huston K. Kennedy, in a field survey on August 10, 1994, do hereby certify that under requirements of P.A. 74, Michigan P.A. of 1970, the corner points mentioned in lines 1 and 2 above were in conformance with regulations and rules therefore as required in the current manual of survey instructions of the United States Department of the Interior, Bureau of Land Management or by a decree of a Court of Law and/or that the corner points mentioned in lines 3, 4 and 5 above were in conformance with the rules of the Michigan Board of Land Surveyors or by a Decree of a Court of Law; established, re-established, monumented, re-monumented, recovered, found as expressed below:



NOTE: Not more than 4 corners, all in the same town and range, may be recorded on this certificate.

A. Description of original monument and accessories and/or subsequent restoration:

1818-GLO Wampler, D.S.; Set Post 36" White Oak N63\*W 40 Links; 10" White Oak S64\*W 81 Links
1.) 1979-Buckerfield, P.S. #10868; LCRC L.7508, Pg.675 - Fnd 1/2" Iron Rod

B. Description of corner evidence found and/or method applied in restoring or reestablishing corner:

1994 Kennedy Surveying, Inc. - Kennedy, P.S. #17623 - Fnd 1/2" Iron Rod with a tree and rock row extending to the East, West and South
Witnesses from LCRC #1 were used to recover and verify the location of the found 1/2" Iron Rod.
I accepted the found 3/8" Iron Rod as the best evidence of the original corner position.

C. Description of monument for corner and accessories established to perpetuate locating the position of the corner:

I-6 I replaced the found 1/2" Iron Rod with 1/2" Iron Rod encased in a 4" diameter concrete cylinder 36" diameter brass cap stamped Oakland County Remonumentation, PS #17623.
S87\*W 17.00' Set PK & Remon. Washer South face 10" Cherry
S05\*E 42.85' Set PK & Remon. Washer West face 12" Box Elder
N15\*E 36.77' Set PK & Remon. Washer West face 12" Maple
N85\*E 43.72' Set PK & Remon. Washer South face 36" Oak

The selected location is accepted by me and is generally accepted by Professional Surveyors as the best available evidence of the position of the original corner.



Signed by [Signature]
Surveyor's Michigan License No. 17623

Date September 10, 1994