

JUL 14 95 125239

LIBER 15517pc407

LAND CORNER RECORDATION CERTIFICATE
Filing Requirement of Act 74, Mich. P.A. 1970

For corners in Oakland (County)

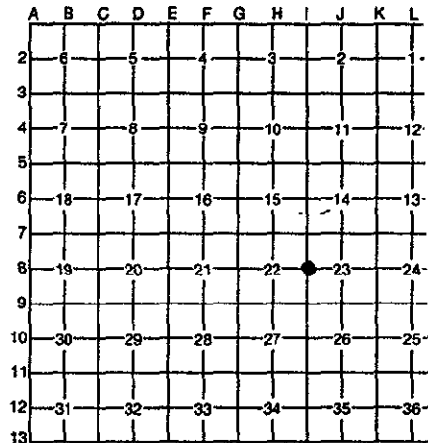
Located In: Oxford Twp. Corner Code #

\$ 7.00 MISCELLANEOUS RECORDING
\$ 2.00 REMONUMENTATION
14 JUL 95 8:37 A.M. RECEIPT# 9B
PAID RECORDED - OAKLAND COUNTY
LYNN D. ALLEN, CLERK/REGISTER OF DEEDS
Compliance with ACT 345, P.A. 1990

Table with 3 columns: Item description, T/R/S, and Corner Code #. Includes items like Public Land Survey, Property Controlling in Section, and Miscellaneous Property in Section.

APPROVED ON: 6-14-95 TAMS
OAKLAND COUNTY REMONUMENTATION PEER GROUP COMMITTEE
Register of Deeds Stamp & File Number

4. Lot No. , Recorded Plat
5. Private Claims



I, Huston K. Kennedy, in a field survey on April 26, 1995, do hereby certify that under requirements of P.A. 74, Michigan P.A. of 1970, the corner points mentioned in lines 1 and 2 above were in conformance with regulations and rules therefore as required in the current manual of survey instructions of the United States Department of the Interior, Bureau of Land Management or by a decree of a Court of Law and/or that the corner points mentioned in lines 3, 4 and 5 above were in conformance with the rules of the Michigan Board of Professional Surveyors or by a Decree of a Court of Law; established, re-established, monumented, re-monumented, recovered, found as expressed below:

NOTE: Not more than 4 corners, all in the same town and range, may be recorded on this certificate.

- A. Description of original monument and accessories and/or subsequent restoration:
1818-GLO Wampler, D.S.; Set Post 18" Black Oak S10°E 53 Links; 18" Black Oak N15°W 16 Links
1.) 1977-Kennedy, PS #17623; LCRC L.7037, Pg.886 - Fnd 1/2" Iron Rod
2.) 1982-Henderson, PS #16043; LCRC L.8153, Pg.440 - Fnd Iron
3.) 1977-Kennedy, PS #17623; Unrecorded Survey - Fnd 1/2" Iron Rod, used same wit as 1977 LCRC
4.) 1981-Henderson, PS #16043; Unrecorded Survey - Fnd Iron Rod, used same wit as 1981 LCRC
5.) 1987-Kennedy, PS #17623; Unrecorded Survey - Fnd 1/2" Iron Rod, used same wit as 1977 LCRC
6.) 1989-Kennedy, PS #17623; Unrecorded Survey - Fnd 1/2" Iron Rod, used same wit as 1977 LCRC
7.) 1991-Kennedy, PS #17623; Unrecorded Survey - Fnd 1/2" Iron Rod, used same wit as 1977 LCRC
8.) 1992-Kennedy, PS #17623; Unrecorded Survey - Fnd 1/2" Iron Rod, used same wit as 1977 LCRC

B. Description of corner evidence found and/or method applied in restoring or reestablishing corner:
1995 Kennedy Surveying, Inc. - Kennedy, PS #17623 - Fnd 1/2" Iron Rod in the centerline of North Oxford Road extending to the North & South, which has a bituminous surface, and a fence-tree row extending to the East. Old gravel pit on the West side of the road
Witnesses from LCRC #1 & 2 were used to recover and verify the location of the found 1/2" Iron Rod.

I accepted the found 1/2" Iron Rod as the best evidence of the original corner position.

FIELD MEASUREMENTS BETWEEN

I-8 to I-7 3140.12 Ft., GLO = 40 chains or 2640.00 Ft.
I-8 to I-9 3151.66 Ft., GLO = 40 chains or 2640.00 Ft.

C. Description of monument for corner and accessories established to perpetuate locating the position of the corner:
I-8 I replaced the found 1/2" Iron Rod with a 5/8" x 24" Iron Rod w/2" diameter brass cap stamped Oakland County Remonumentation, P #17623 in a new Monument Box.
S71°E 36.29' Set PK & Remon. Washer North face Power Pole
S27°E 158.03' Set PK & Remon. Washer NE face Power Pole
N86°W 57.00' Set PK & Remon. Washer South face Post
S39°W 70.35' Set PK & Remon. Washer NW face 8" Elm

The selected location is accepted by me and is generally accepted by Professional Surveyors as the best available evidence of the position of the original corner.

Signed by [Signature]
Surveyor's Michigan License No. 17623

Date June 14, 1995

