

LAND CORNER RECORDATION CERTIFICATE
Filing Requirement of Act 74, Mich. P.A. 1970

For corners in
Oakland
(County)

Located In: Oxford Township Corner Code #

Table with 3 columns: Description, Township/Range/Section, and Corner Code. Row 1: Public Land Survey, T 5 N R 10 E, K-2. Row 2: Property Controlling in Section, S T R. Row 3: Miscellaneous Property in Sec., S T R.

4. Lot No. , Recorded Plat
5. Private Claims

I, Huston K. Kennedy, in a field survey on November 4, 1993, do hereby certify that under requirements of P.A. 74, Michigan P.A. of 1970, the corner points mentioned in lines 1 and 2 above were in conformance with regulations and rules therefore as required in the current manual of survey instructions of the United States Department of the Interior, Bureau of Land Management or by a decree of a Court of Law and/or that the corner points mentioned in lines 3, 4 and 5 above were in conformance with the rules of the Michigan Board of Land Surveyors or by a Decree of a Court of Law; established, re-established, monumented, re-monumented, recovered, found as expressed below:

NOTE: Not more than 4 corners, all in the same town and range, may be recorded on this certificate.

A. Description of original monument and accessories and/or subsequent restoration:

- 1817 GLO - Wampler, D.S.; Set post; 18" White Oak N74°E 0.28 lks.
1975 Anderson, P.S. #11495; LCRC L.6462, Pg.888-889 - Fnd 1/2" iron rod
1982 Kennedy, P.S. #17623; LCRC L.8256, Pg.502 - Fnd 1/2" iron rod

B. Description of corner evidence found and/or method applied in restoring or reestablishing corner:

1993 Kennedy Surveying, Inc. - Huston Kennedy, P.S. #17623 - Fnd 1/2" iron rod in the center of Barber Road, which is gravel. There are tree lines extending East and West. The witness point in the power pole and the witness trees still exist from the 1982 LCRC, but the witness points are grown over. The witness trees and the witness point in the power pole were used to recover and verify the found 1/2" iron rod.

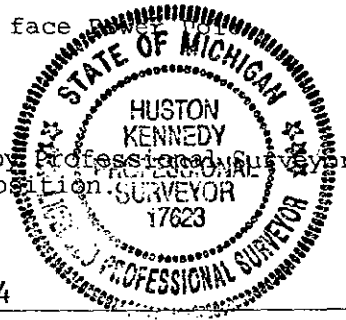
I accepted the found 1/2" iron rod as the best evidence of the original corner position.

C. Description of monument for corner and accessories established to perpetuate locating the position of the corner:

K-2 I replaced the found 1/2" iron rod with a 5/8" x 24" iron rod with a 2" diameter cap stamped Oakland County Remonumentation P.S. #17623.

- Due East-31.58 ft-Set PK/Remon. Tag above existing witness North face
N16°E-44.17 ft-Set PK/Remon. Tag West face 9" Ash
N32°W-42.95 ft-Set PK/Remon. Tag NE face 22" Locust
S39°W-29.34 ft-Set PK/Remon. Tag NW face 21" Locust

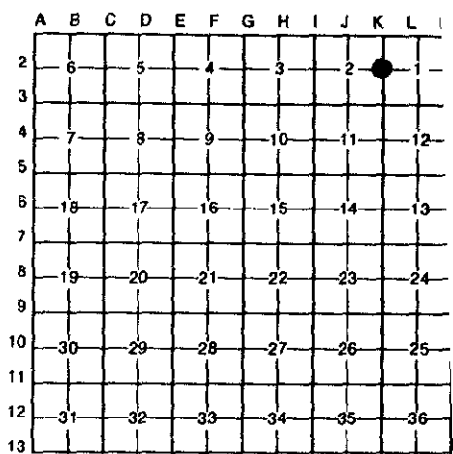
The selected location is accepted by me and is generally accepted by Professional Surveyors as the best available evidence of the position of the original position.



Signed by [Signature]
Surveyor's Michigan License No. 17623

Date March 23, 1994

OK - T. SMITH
\$ 7.00 MISCELLANEOUS RECORDING
\$ 2.00 REMONUMENTATION
8 SEP 94 3:20 P.M. RECEIPT# 134B
PAID RECORDED - OAKLAND COUNTY
LYNN D. ALLEN REGISTER OF DEEDS
ACT 345, P.A. 1999
APPROVED ON: 1-5-94
OAKLAND COUNTY REMONUMENTATION
PEER GROUP COMMITTEE
Register of Deeds Stamp & File Number



Handwritten initials/signature.