

OK - T. SMITH

LAND CORNER RECORDATION CERTIFICATE
Filing Requirement of Act 74, Mich. P.A. 1970

\$ 7.00 MISCELLANEOUS RECORDING
\$ 2.00 REMONUMENTATION
25 OCT 94 8:34 A.M. RECEIPT# 44B
PAID RECORDED - OAKLAND COUNTY
LYNN D. ALLEN, CLERK/REGISTER OF DEEDS

For corners in

Oakland
(County)

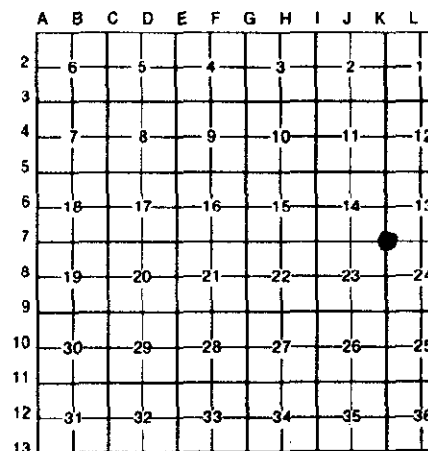
Located In: Oxford Twp. Corner Code #

1. Public Land Survey	T 5N	R 10E	K-7
	T	R	
	T	R	
	T	R	
2. Property Controlling in Section	S	T	R
	S	T	R
3. Miscellaneous Property in Sec.	S	T	R
	S	T	R

Compliance with ACT 345, P.A. 1990
APPROVED ON: 9-14-94
OAKLAND COUNTY REMONUMENTATION PEER GROUP COMMITTEE

Register of Deeds Stamp & File Number

- 4. Lot No. _____, Recorded Plat _____
- 5. Private Claims _____



I, Huston K. Kennedy, in a field survey on August 1, 19 94, do hereby certify that under requirements of P.A. 74, Michigan P.A. of 1970, the corner points mentioned in lines 1 and 2 above were in conformance with regulations and rules therelore as required in the current manual of survey instructions of the United States Department of the Interior, Bureau of Land Management or by a decree of a Court of Law and/or that the corner points mentioned in lines 3, 4 and 5 above were in conformance with the rules of the Michigan Board of Land Surveyors or by a Decree of a Court of Law; established, re-established, monumented, re-monumented, recovered, found as expressed below:

NOTE: Not more than 4 corners, all in the same town and range, may be recorded on this certificate.

A. Description of original monument and accessories and/or subsequent restoration:

- 1818-GLO Wampler, D.S.; Set Post; 18" White Oak N48*W 134 Links; 12" White Oak S67*E 73 Links
- 1.) 1975-Kennedy, P.S. #17623; LCRC L.6414, Pg.19 - Fnd 1/2" Iron Rod
- 2.) 1982-Kennedy, P.S. #17623; LCRC L.8190, Pg.68 - Fnd Bolt Spike
- 3.) 1973-Kennedy, P.S. #17623; Survey L.6278, Pgs.791-792 - Fnd Bolt Spike
- 4.) 1982-Kennedy, P.S. #17623; Unrecorded Survey - Fnd Bolt Spike

B. Description of corner evidence found and/or method applied in restoring or reestablishing corner:

1994 Kennedy Surveying, Inc. - Kennedy, P.S. #17623 - Fnd 5/8" Bolt Spike that is located 8" under the road surface and 12.5' North of the center of Ray Road, which is gravel surface. The Southeast corner of Section 14 is also the Southeast corner of "Dalgles Farms" a plat recorded in Liber 163 of Plats, on Pages 37-39 of Oakland County Records.

Witnesses from LCRC #1 & 2 were used to recover and verify the location of the found 5/8" Bolt Spike.

I accepted the found 5/8" Bolt Spike as the best evidence of the original position.

C. Description of monument for corner and accessories established to perpetuate locating the position of the corner:

- K-7 I replaced the found 5/8" Bolt Spike 1/2" Iron Rod encased in a 4" diameter concrete cylinder 36" long w/2" diameter cap stamp Oakland County Remonumentation, PS #17623.
- Due North 33.19' Set PK & Remon. Washer West face 19" Oak
- N17°E 64.58' Set PK & Remon. Washer SE face Power Pole
- N27°E 33.89' Set PK & Remon. Washer in 6 x 6 Wooden Fence Post
- N49°E 51.68' Set PK & Remon. Washer in 6 x 6 Wooden Fence Post

The selected location is accepted by me and is generally accepted by Professional Surveyors as the best available evidence of the position of the original corner.



Signed by [Signature]
Surveyor's Michigan License No. 17623

Date September 15, 1994