

**SURVEY &
REMONUMENTATION**

LIBER **14833** PG **151**

94 193395

MAY - 1 1995

**LAND CORNER RECORDATION CERTIFICATE
Filing Requirement of Act 74, Mich. P.A. 1970**

Compliance with
ACT 345, P.A. 1990

For corners in
Oakland

COMMISSION

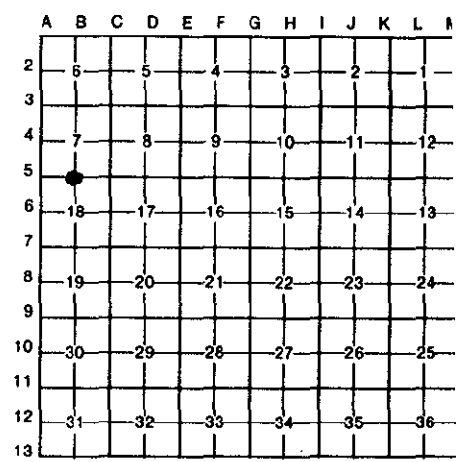
APPROVED ON: 1-7-94
OAKLAND COUNTY REMONUMENTATION
PEER GROUP COMMITTEE
\$ 7.00 MISCELLANEOUS RECORDING
\$ 2.00 REMONUMENTATION
15 JUL 94 7:37 A.M. RECEIPT# 1A
PAID RECORDED - OAKLAND COUNTY
LYNN D. ALLEN, CLERK/REGISTER OF DEEDS

OK - T. SMITH

Register of Deeds Stamp & File Number

(County)	Located In:		Corner Code #/
	5N	11E	
1. Public Land Survey	T	R	B-5
	T	R	
	T	R	
	T	R	
	T	R	
2. Property Controlling in Section	S	R	
	S	R	
3. Miscellaneous Property in Sec.	S	R	
	S	R	

4. Lot No. _____, Recorded Plat _____
5. Private Claims _____



Bruce Antcliff November 9 93

I, _____, in a field survey on _____, 19_____, do hereby certify that under requirements of P.A. 74, Michigan P.A. of 1970, the corner points mentioned in lines 1 and 2 above were in conformance with regulations and rules therefore as required in the current manual of survey instructions of the United States Department of the Interior, Bureau of Land Management or by a decree of a Court of Law and/or that the corner points mentioned in lines 3, 4 and 5 above were in conformance with the rules of the Michigan Board of Land Surveyors or by a Decree of a Court of Law; established, re-established, monumented, re-monumented, recovered, found as expressed below:

NOTE: Not more than 4 corners, all in the same town and range, may be recorded on this certificate.

A. Description of original monument and accessories and/or subsequent restoration:

B-5 GLO	L.C.R.C. L. 6717, P. 294 (1976)	L.C.R.C. L. 7300, P. 668 (1978)
Post	1/2" Iron Pin	1/2" Iron Pin
	N 20° E 29.19 22" Maple	N 10° E 29.21 28" Maple
	South 31.48' P Pole	N 75° E 104.19 Pole
	N 80° E 104.1 P Pole	S 05° W 31.56 Pole

Survey H. Kennedy (1/11/80)
Same as L.C.R.C. L. 6717, P.294

B. Description of corner evidence found and/or method applied in restoring or reestablishing corner:

**B-5 Found 1/2" iron bar in centerline of gravel road running E-W (Noble Road)
Checks the following witnesses:**

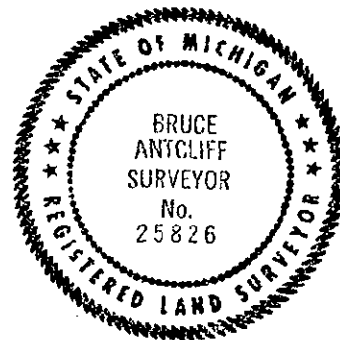
L.C.R.C. L. 6717, P. 294	L.C.R.C. L. 7300, P. 668
PK/W W Face 22" Maple N 20° E 28.71'	N 10° E 29.21 28" Maple

C. Description of monument for corner and accessories established to perpetuate locating the position of the corner:

B-5 The selected location is accepted by the Contractor and is generally accepted by professional surveyors as the best available evidence of the position of the original corner.

Set 5/8" rebar with standard Oakland County cap.

- P.K. Nail and Brass Tag in E Face 36" Maple - N 20° E - 29.66'
- P.K. Nail and Brass Tag in SW Face 12" Elm - S 60° E - 38.98'
- P.K. Nail and Brass Tag in SW Face 20" Elm - S 30° E - 21.90'
- P.K. Nail and Brass Tag in SW Face 18" Box Elder - S 10° E - 23.39'



Signed by Bruce Antcliff
Surveyor's Michigan License No. 25826

Date 7-11-94