

COPY  
JUL 27 1995 136669

LIST 15550 PC 264

LAND CORNER RECORDATION CERTIFICATE

Filing Requirement of Act 74, Mich. P.A. 1970 \$ 7.00 MISCELLANEOUS RECORDING

For corners in

_____	Located in:	Addison	Corner Code #
_____	_____	Township	_____
1. Public Land Survey	T <u>5N</u> R <u>11E</u>		<u>B-11</u>
	T _____ R _____		_____
	T _____ R _____		_____
	T _____ R _____		_____
2. Property Controlling in Section	S _____ T _____ R _____		_____
	S _____ T _____ R _____		_____
3. Miscellaneous Property in Sec.	S _____ T _____ R _____		_____
	S _____ T _____ R _____		_____

\$ 2.00 REMONUMENTATION  
27 JUL 95 3:33 P.M. RECEIPT# 1408  
PAID RECORDED - OAKLAND COUNTY  
LYNN D. ALLEN, CLERK/REGISTER OF DEEDS

Compliance with  
ACT 345, P.A. 1990

APPROVED ON: 6-19-95 Tom S  
OAKLAND COUNTY REMONUMENTATION  
REGISTER OF DEEDS STAMP & FILE NUMBER

- 4. Lot No. \_\_\_\_\_, Recorded Plat \_\_\_\_\_
- 5. Private Claims \_\_\_\_\_

I, Randy Kolehouse, in a field survey on May 12 19 95, do hereby certify that under requirements of P.A. 74 Michigan P.A. of 1970, the corner points mentioned in lines 1 and 2 above were in conformance with regulations and rules therefore as required in the current manual of survey instructions of the United States Department of the Interior, Bureau of Land Management or by a decree of a Court of Law and/or that the corner points mentioned in lines 3, 4 and 5 above were in conformance with the rules of the Michigan Board of Land Surveyors or by a Decree of a Court of Law; established, re-established, monumented, re-monumented, recovered, found as expressed below:

NOTE: Not more than 4 corners, all in the same town and range, may be recorded on this certificate.

A. Description of original monument and accessories and/or subsequent restoration:

B-11	Year	Surveyor	Survey	Set Post
	1817	Wampler	G.L.O.	
	1954	Gillespie	Unrecorded Survey	
	1980	Buckerfield	L.C.R.C. L. 7777 P. 373	3/4" Pipe
	1988	Kennedy	L.C.R.C. L. 10709 P. 790	Iron Pipe
	1989	Isaacs, Jr.	Cert. Survey L. 11006 P. 098-099 and L.C.R.C. L. 11006 P. 100	3/4" Pipe
	1990	Buckerfield	2 Unrecorded Surveys on Adj. Properties	3/4" Pipe
	1993	Ward	L.C.R.C. L. 13490 P. 478	3/4" Pipe

B. Description of corner evidence found and/or method applied in restoring or reestablishing corner:

B-11 Found a 3/4" pipe on an abandoned road off Drahner Road. The pipe is on a fence line to the North. It also agrees with witnesses of record as corner being used by above surveys since 1980.

L.C.R.C. L. 7777 P. 373 1980  
S 85° E 61.20' to 4" Well Casing  
North 31.53' to Nail in 36" Oak  
West 14.84' to Nail in 8" Oak

L.C.R.C. L. 13490 P. 478  
S 85° E 61.20' Old Well Casing  
North 31.34' Nail & Disc. #17623 36" Oak  
West 14.82' Nail & Disc. #17623 15" Oak  
S 40° W 4.31' Nail & Disc. #17623 6" Oak

L.C.R.C. L. 10709 P. 790 1988  
S 40° W 4.31' N/W NW Side 6" Oak  
West 14.82' N/W S Side 15" Oak  
N 5° E 31.34' N/W W Side 31" Oak

Isaacs Measures East 2644.22' to C-11

C. Description of monument for corner and accessories established to perpetuate locating the position of the corner:

B-11 Replaced the 3/4" pipe with a 4" x 36" concrete monument with brass cap stamped "Oakland County Remonumentation P.S. #25854."

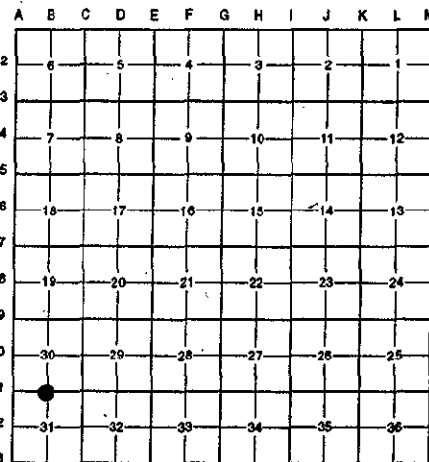
- PK Nail & Tag Stamped "Oakland Co. Remonumentation P.S. #25854" in W Face 36" Oak N 5° E 31.22'
- PK Nail & Tag Stamped "Oakland Co. Remonumentation P.S. #25854" in W Face 10" Poplar N 55° E 24.49'
- PK Nail & Tag Stamped "Oakland Co. Remonumentation P.S. #25854" in W Face 6" Oak S 40° W 4.29'
- PK Nail & Tag Stamped "Oakland Co. Remonumentation P.S. #25854" in S Face 18" Oak N 85° W 14.86'
- C/L 4" Well Casing S 85° E 61.25'

The selected location is accepted by the Contractor and is generally accepted by professional surveyors as the best available evidence of the position of the original corner.

Signed by Randy J Kolehouse  
EARTH TECH

Date 7/15/95

Surveyor's Michigan License No. 25854



7.00  
2.00  
file

